



UNI  
BASEL

Antje Maria Teichert

**Screening of Chiral Diels-Alder Catalysts by  
Mass Spectrometric Monitoring  
of the Retro Reaction**

**Screening of Chiral Diels-Alder Catalysts by  
Mass Spectrometric Monitoring of the Retro Reaction**

**Inauguraldissertation**

zur

Erlangung der Würde eines Doktors der Philosophie

vorgelegt der

Philosophisch-Naturwissenschaftlichen Fakultät

der Universität Basel

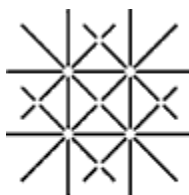
von

**Antje Maria Teichert**

aus

Lüneburg / Deutschland

Basel 2007



UNI  
BASEL

**Bibliografische Information der Deutschen Nationalbibliothek**

Die Deutsche Nationalbibliothek verzeichnet diese Publikation in der Deutschen Nationalbibliografie; detaillierte bibliografische Daten sind im Internet über <http://dnb.ddb.de> abrufbar.

1. Aufl. - Göttingen : Cuvillier, 2007

Zugl.: Basel, Univ., Diss., 2007

978-3-86727-445-6

Genehmigt von der Philosophisch-Naturwissenschaftlichen Fakultät auf Antrag von

Prof. Dr. Andreas Pfaltz  
Prof. Dr. Wolf-Dietrich Woggon

Basel, den 13. November 2007

Prof. Dr. Hans-Peter Hauri  
Dekan

© CUVILLIER VERLAG, Göttingen 2007

Nonnenstieg 8, 37075 Göttingen

Telefon: 0551-54724-0

Telefax: 0551-54724-21

[www.cuvillier.de](http://www.cuvillier.de)

Alle Rechte vorbehalten. Ohne ausdrückliche Genehmigung des Verlages ist es nicht gestattet, das Buch oder Teile daraus auf fotomechanischem Weg (Fotokopie, Mikrokopie) zu vervielfältigen.

1. Auflage, 2007

Gedruckt auf säurefreiem Papier

978-3-86727-445-6

Für Hanno und meine Eltern



## Acknowledgments

I would like to express my gratitude to my supervisor, Professor Dr. Andreas Pfaltz for giving me the opportunity of joining his group, for his constant support and confidence as well as for the liberty given within my project.

Special thanks go to Professor Wolf-Dieter Woggon for agreeing to co-examine this thesis and to Prof. Helma Wennemers for chairing the examination.

I thank Dr. Axel Franzke, Björn Gschwend and Dr. Clément Mazet for recording numerous 2D NMR spectra. I would also like to acknowledge Dr. Sigmund Gunzenhauser and Dr. Fernando Romero for their help and support regarding the old and the new ESI MS machines. I thank Markus Neuburger and Dr. Silvia Schaffner for recording X-ray data and for refining X-ray structures. I would also like to thank Markus Wiesner for providing me with the peptide-catalysts. Lars Tröndlin and Christian Ebner are acknowledged for the synthetic contribution during their Wahlpraktikum.

Special thanks to Dr. Stephen Thomas, Dr. Fabiola Barrios-Landeros, Ivana Fleischer, Constanze Müller and Aurélie Toussaint for proof-reading this manuscript. I would also like to thank Dr. Cara Brocklehurst for correcting numerous English texts and encouraging discussions.

Thanks to the past and present members of the Pfaltz group who have made my stay in Basel an enjoyable time. A big thanks goes to Marina Mambelli Johnson for helping with all organisational work. I especially thank my colleagues in lab 208 for the good working atmosphere and delicious lab dinners.

I am very thankful to my family. Without them I wouldn't be where I am today.

Finally, thanks to Hanno for all his patient and constant support.



# Contents

## List of Abbreviations

## Summary

<b>1</b>	<b>Introduction</b>	<b>1</b>
1.1	Electrospray Ionisation Mass Spectrometry	1
1.1.1	Historical Perspective and Development	1
1.1.2	Electrospray Ionisation Process	2
1.1.3	Detection of Organometallic Reaction Intermediates by ESI MS	4
1.1.4	ESI MS as Tool for Detection of Reaction Intermediates in Organocatalysis	5
1.1.5	ESI MS Screening	6
1.2	Mass Labels and Quasienantiomers in Mass Spectrometry	8
1.3	The Diels-Alder Reaction	9
1.3.1	General Aspects	9
1.3.2	Lewis Acid Catalysis in Asymmetric Diels-Alder Reactions	12
1.3.3	Organocatalysed Diels-Alder Reactions	15
1.4	Concept of Retro Reactions in ESI MS Screening	18
1.5	Objectives	19
<b>2</b>	<b>ESI MS Screening of Chiral Copper(II)-Catalysts</b>	<b>23</b>
2.1	Introduction	23
2.2	Synthesis of Quasienantiomeric Diels-Alder Adducts and Chiral Ligands	24
2.2.1	Bis(oxazoline) Ligand Synthesis	27
2.2.2	Bis(imine) Ligand Synthesis	28
2.2.3	Synthesis of Dienophiles	29
2.2.4	Synthesis of Diels-Alder Adducts	31
2.3	Development of Screening Method	34
2.3.1	2-Oxazolidinone-Derived Quasienantiomers	35
2.3.2	2-Thiazolidinethione-Derived Quasienantiomers	36
2.3.3	Evaluation of Retro-Diels-Alder Reaction Conditions	39
2.3.4	Retro-Diels-Alder Reaction under Non-Catalytic Conditions	40
2.3.5	Retro-Diels-Alder Reaction under Catalytic Conditions	44
2.3.6	Direct Analysis of Catalytic Intermediates in the Retro-Diels-Alder Reaction: General Screening Protocol	49
2.3.7	Furan-Based Quasienantiomers	50
2.4	Control Experiments	51
2.4.1	Reversed Ligand Configuration and Inversely Labelled Quasienantiomers	51

2.4.2	Comparison with the Results from the Preparative Forward Diels-Alder Reaction	53
2.5	Ligand Screening	54
2.5.1	ESI MS Screening Using Bis(oxazoline) Ligands	54
2.5.2	Comparison with the Results from the Preparative Forward Diels-Alder Reaction	56
2.5.3	ESI MS Screening Using Phosphinooxazoline Ligands	60
2.5.4	ESI MS Screening Using Bis(imine) Ligands	62
2.6	Studies on the Retro-Diels-Alder Reaction	65
2.6.1	Influence of Temperature and Reaction Time on the Retro-Diels-Alder Reaction	65
2.6.2	Reversibility of the Retro-Diels-Alder Reaction under Standard Reaction Conditions	67
2.7	Conclusion and Outlook	69
<b>3</b>	<b>ESI MS Screening of Organocatalysed Retro-Diels-Alder Reactions</b>	<b>73</b>
3.1	Introduction	73
3.2	Synthesis of Quasienantiomeric Diels-Alder Adducts	74
3.3	Development of Screening Method	75
3.3.1	Preliminary Experiments	75
3.3.2	Evaluation of Appropriate Quasienantiomers	77
3.3.3	Direct Monitoring of Iminium Ion Intermediates in the retro-Diels-Alder Reaction using Imidazolidinone and Proline-Based Catalysts: General Screening Protocol	78
3.4	Control Experiments	79
3.4.1	Reversed Ligand Configuration and Inversely Labelled Quasienantiomers	79
3.4.2	Comparison with Preparative Experiments	80
3.5	ESI MS Screening of Imidazolidinone and Proline-based Organocatalysts	81
3.5.1	ESI MS Screening Results	81
3.5.2	Control Experiments with Inversely Labelled Quasienantiomers	85
3.6	ESI MS Screening of Peptide-Catalysts	86
3.6.1	General Screening Protocol	87
3.6.2	Comparison with the Forward-Diels-Alder Reaction	87
3.6.3	ESI MS Screening Results	88
3.6.4	Control Experiments with Inversely Labelled Quasienantiomers	91
3.7	Conclusion and Outlook	92
<b>4</b>	<b>ESI MS Screening of Organocatalyst Mixtures</b>	<b>97</b>
4.1	Objectives	97

4.2	Development of a Screening Method for Mixtures of Imidazolidinone and Proline-Based Organocatalysts	98
4.2.1	Preliminary Studies	98
4.2.2	Influence of Counter-Ions in Catalyst Mixtures	100
4.2.3	Optimisation of the Reaction Conditions	102
4.2.4	ESI MS Screening Results	106
4.3	Screening of Peptide-Catalyst Mixtures	107
4.3.1	Preliminary Studies	107
4.3.2	ESI MS Screening Results	108
4.4	Conclusion and Outlook	109
<b>5</b>	<b>Experimental</b>	<b>113</b>
5.1	Analytical Methods	113
5.2	Working Techniques	114
5.3	Synthesis of Quasienantiomeric Diels-Alder Adducts and Chiral Ligands for the Copper(II)-Catalysed Retro-Diels-Alder Reaction	115
5.3.1	Bis(oxazoline) Ligand Synthesis	115
5.3.2	Bis(imine) Ligand Synthesis	127
5.3.3	Synthesis of Dienophiles	133
5.3.4	Synthesis of Diels-Alder Adducts	149
5.4	Synthesis of Diels-Alder Adducts for the Organocatalysed Retro-Diels-Alder Reaction	170
5.4.1	Synthesis of Diels-Alder Adducts	170
5.4.2	Synthesis of Organocatalysts	181
5.5	General Working Methods and Conditions for ESI MS Experiments	185
5.5.1	Bis(oxazoline)copper(II)-Catalysed Retro-Diels-Alder Reaction: General Method	185
5.5.2	Phosphinooxazolinecopper(II)-Catalysed Retro-Diels-Alder Reaction	186
5.5.3	Bis(imine)copper(II)-Catalysed Retro-Diels-Alder Reaction	186
5.5.4	Organocatalysed Retro-Diels-Alder Reaction	187
5.5.5	Peptide-Catalysed Retro-Diels-Alder Reaction	188
<b>6</b>	<b>Appendix</b>	<b>191</b>
6.1	X-Ray Crystal Structures	191
<b>7</b>	<b>Bibliography</b>	<b>195</b>



## List of Abbreviations

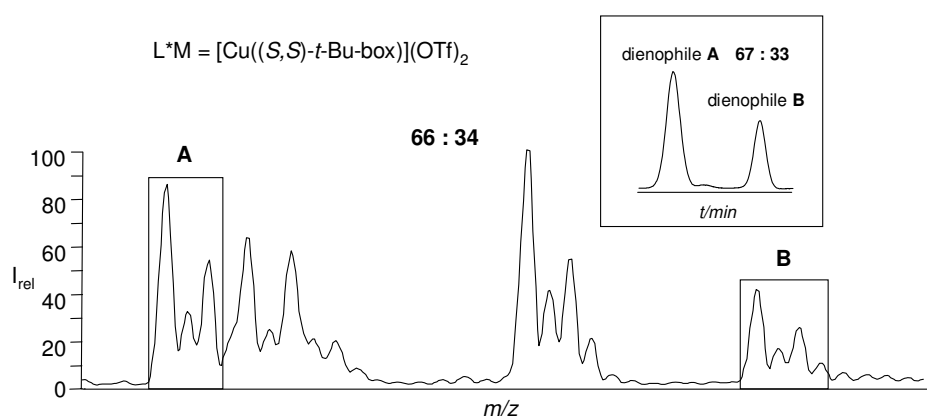
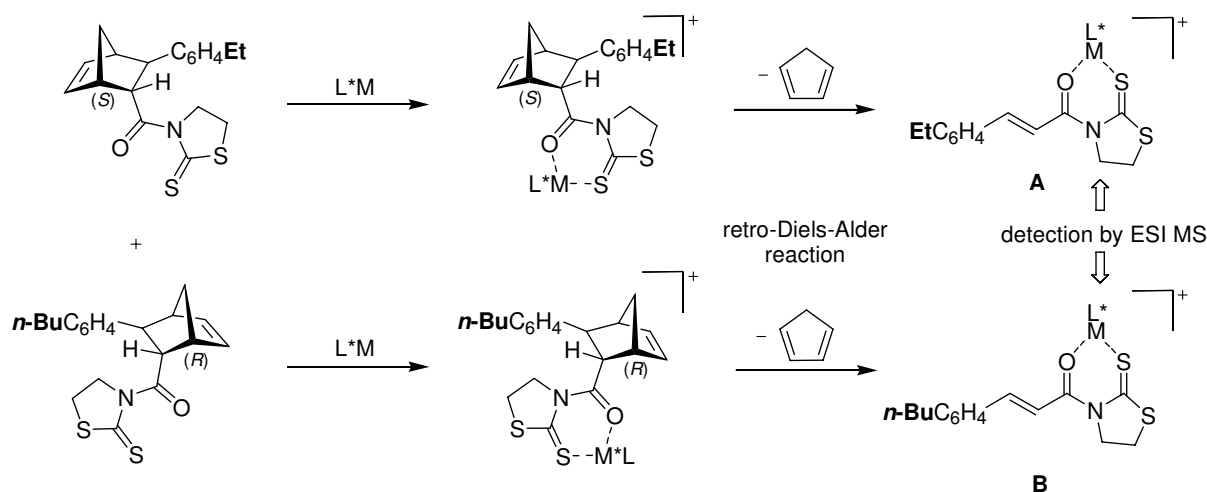
<b>Å</b>	Ångström ( $10^{-10}\text{m}$ )	<b>Hz</b>	Hertz
<b>Ar</b>	aryl	<b>i</b>	iso
<b>BINOL</b>	2,2'-dihydroxy-1,1'-binaphthyl	<b>I<sub>rel</sub></b>	relative intensity
<b>Bn</b>	benzyl	<b>J</b>	coupling constant
<b>Bz</b>	benzoyl	<b>L*</b>	chiral ligand
<b>box</b>	bis(oxazoline)	<b>LA</b>	Lewis acid
<b>br</b>	broad	<b>LUMO</b>	lowest unoccupied molecular orbital
<b>Bu</b>	butyl	<b>M</b>	molar (mol/L)
<b>c</b>	concentration	<b>Me</b>	methyl
<b>Cat.</b>	catalyst	<b>m.p.</b>	melting point
<b>CID</b>	collision induced dissociation	<b>MS</b>	mass spectrometry
<b>Conv.</b>	conversion	<b>m/z</b>	mass-to-charge ratio
<b>COSY</b>	correlation spectroscopy (NMR)	<b>Np</b>	naphthyl
<b>DA</b>	Diels-Alder	<b>n.d.</b>	not detected
<b>DABCO</b>	1,4-diazabicyclo[2.2.2]octane	<b>NMR</b>	nuclear magnet resonance
<b>δ</b>	chemical shift	<b>ob.</b>	observed
<b>DMAP</b>	4-(dimethylamino)pyridine	<b>P</b>	product
<b>DMF</b>	dimethylformamide	<b>Pr</b>	propyl
<b>EDG</b>	electron donating group	<b>Ph</b>	phenyl
<b>ee</b>	enantiomeric excess	<b>ppm</b>	parts per million
<b>er</b>	enantiomeric ratio	<b>rac</b>	racemic
<b>EWG</b>	electron withdrawing group	<b>R<sub>f</sub></b>	retention factor
<b>EI</b>	electron impact	<b>r.t.</b>	room temperature
<b>eq.</b>	equivalent	<b>S</b>	substrate
<b>ESI</b>	electrospray ionisation	<b>t</b>	<i>tert</i>
<b>Et</b>	ethyl	<b>TADDOL</b>	tetraaryl-1,3-dioxolane-4,5-dimethanol
<b>EtOAc</b>	ethyl acetate	<b>TES</b>	triethylsilyl
<b>FAB</b>	fast atom bombardment	<b>TFA</b>	trifluoromethane sulfonic acid
<b>FTIR</b>	Fourier transform infra-red	<b>Tf</b>	trifluoromethane sulfonyl
<b>GC</b>	gas chromatography	<b>THF</b>	tetrahydrofuran
<b>h</b>	hour	<b>TLC</b>	thin layer chromatography
<b>HOMO</b>	highest occupied molecular orbital	<b>Tol</b>	tolyl
<b>HMBC</b>	heteronuclear multiple bond correlation (NMR)	<b>t<sub>R</sub></b>	retention time
<b>HMQC</b>	heteronuclear multiple quantum coherence (NMR)	<b>TS</b>	transition state
<b>HPLC</b>	high performance liquid chromatography	<b>p-TsOH</b>	<i>p</i> -toluenesulfonic acid
		<b><math>\tilde{\nu}</math></b>	wave number (IR)



## Summary

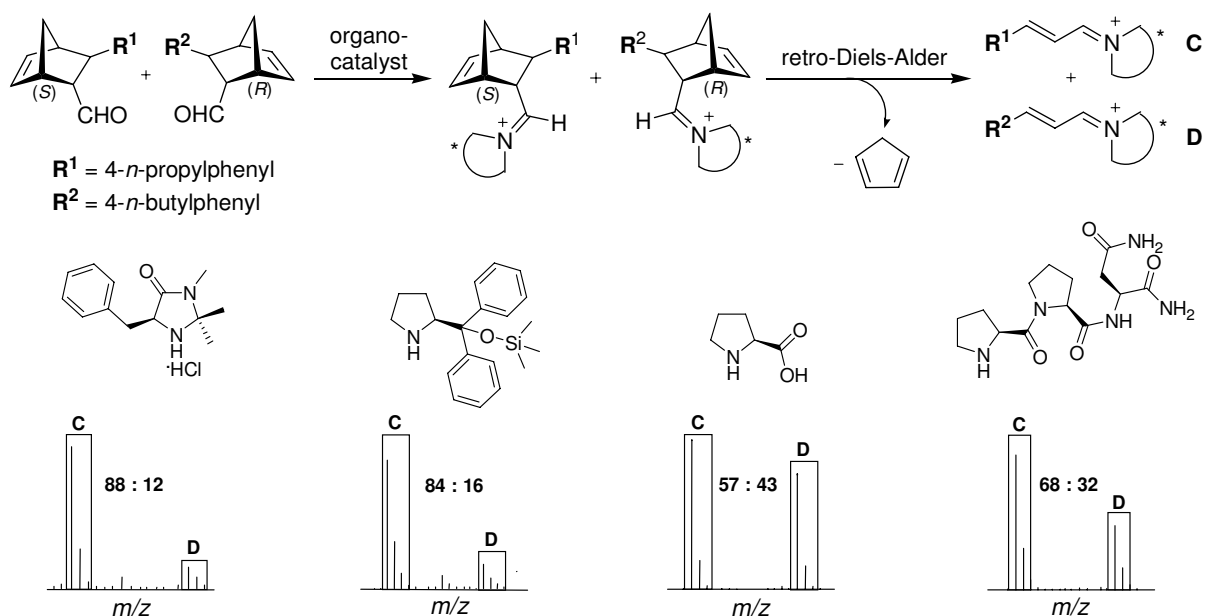
A rapid screening procedure for the identification of chiral Diels-Alder catalysts by ESI MS was developed. Screening of the retro reaction made it possible to indirectly determine the catalyst's enantioselectivity for the forward, product-forming reaction.

We were able to monitor positively charged catalytic intermediates for the retro-Diels-Alder reaction. Use of mass-labelled quasinantiomers allowed the intermediates **A** and **B** to be distinguished by mass spectrometry. The ratio of the mass peaks of **A** and **B** reflected the catalyst's intrinsic enantioselectivity. It was crucial to evaluate the influence of the mass labels on the reactivity of the two quasinantiomers. Sufficiently strong binding between the substrates and the metal catalyst was necessary to allow detection.

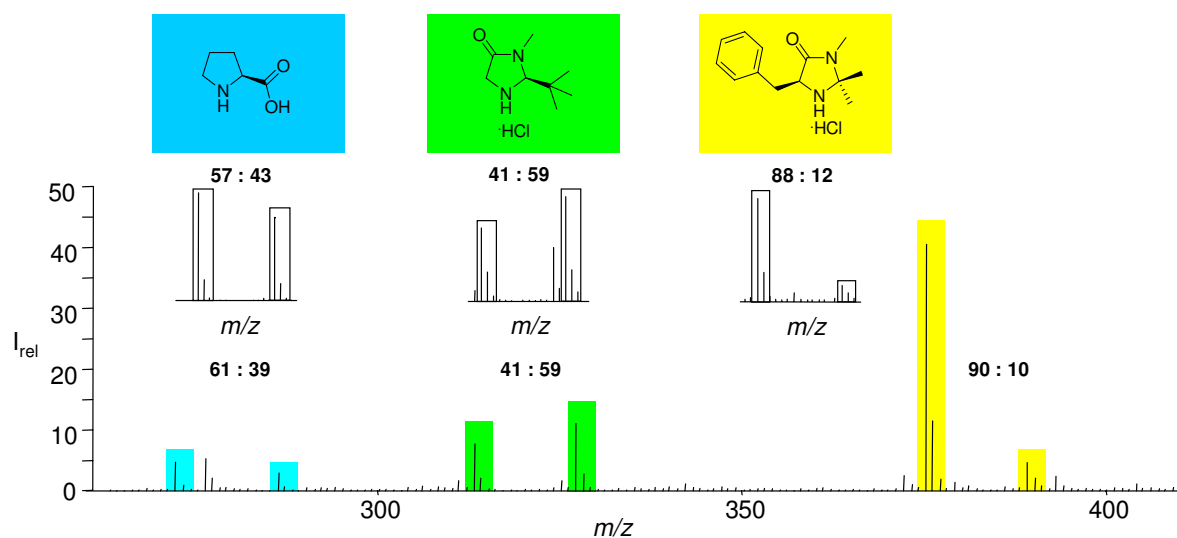


The method was used for the screening of bis(oxazoline), phosphinooxazoline and bis(imine) ligands in the copper-catalysed retro-Diels-Alder reaction to identify highly selective ligands. The selectivities were confirmed by product analysis (HPLC). In accordance to the principle of microscopic reversibility the ratios observed for the retro-Diels-Alder reaction correlated with those obtained for the preparative forward-Diels-Alder reaction.

The method was extended to organocatalytic retro-Diels-Alder reactions. Monitoring mass-labelled iminium ions **C** and **D** allowed direct determination of the catalyst's intrinsic enantioselectivity. This versatile method allowed not only rapid screening of imidazolidinone and proline-based organocatalysts but also of oligopeptide-catalysts. The results obtained by ESI MS were confirmed by preparative reactions.



After establishing a reliable protocol for the screening of organocatalysts, the procedure was successfully applied to multi-catalyst screening. The catalytic intermediates originate from different organocatalysts with different masses allowing facile assignment of the catalytic intermediates. After optimising the conditions, multi-catalyst screening showed excellent correlation with the single catalyst screening.



# **Chapter 1**

Introduction



# 1 Introduction

The importance of asymmetric catalysis for the synthesis of enantiomerically enriched compounds has been highlighted by awarding SHARPLESS, NOYORI and KNOWLES the 2001 Nobel Prize in Chemistry.<sup>[1-3]</sup>

The discovery of new, highly efficient chiral catalysts is often costly and time-consuming. In recent years, many high-throughput screening methods have been developed for a variety of catalysed transformations.<sup>[4-8]</sup> Analysis is usually product-based, which has potential pitfalls as the enantioselectivity of a reaction is often lower than the catalyst's intrinsic selectivity. MARKERT and PFALTZ developed a screening method for determining the intrinsic enantioselectivity of a catalyst using ESI MS. This method was used to rapidly evaluate enantioselective catalysts for the palladium-catalysed kinetic resolution of allylic esters.<sup>[9]</sup> This work was based on an ESI MS screening method by CHEN, which allowed identification of the most effective catalyst in a palladium-catalysed polymerisation (Section 1.1.5).<sup>[10, 11]</sup>

## 1.1 Electrospray Ionisation Mass Spectrometry

### 1.1.1 Historical Perspective and Development

Electrospray ionisation (ESI) allows the transfer of low-volatile and decomposable organic compounds “gently” from solution into the gas-phase, enabling analysis of large fragile biomolecules and organometallic complexes.<sup>[12, 13]</sup> ESI is not an ionisation technique in the sense that neutral species become charged. Instead ions from solution are transferred to the gas-phase by nebulisation.<sup>[14]</sup>

The electrospray process was developed more than 80 years ago for applications ranging from painting to printing. In the late 1960's DOLE realised that electrospraying of a polymer solution into an evaporation chamber resulted in production of intact gaseous macroions.<sup>[15]</sup> This pioneering work by DOLE led FENN and co-workers, 15 years later, to considerably improve the method by coupling an ESI source with a quadrupole mass analyser.<sup>[16, 17]</sup> In contrast to classical techniques ions were transferred to the gas-phase without fragmentation and therefore allowed analysis of the intact molecules.<sup>[16]</sup> Before the implementation of ESI MS biomolecules could not accurately be analysed as their molecular weight exceeded

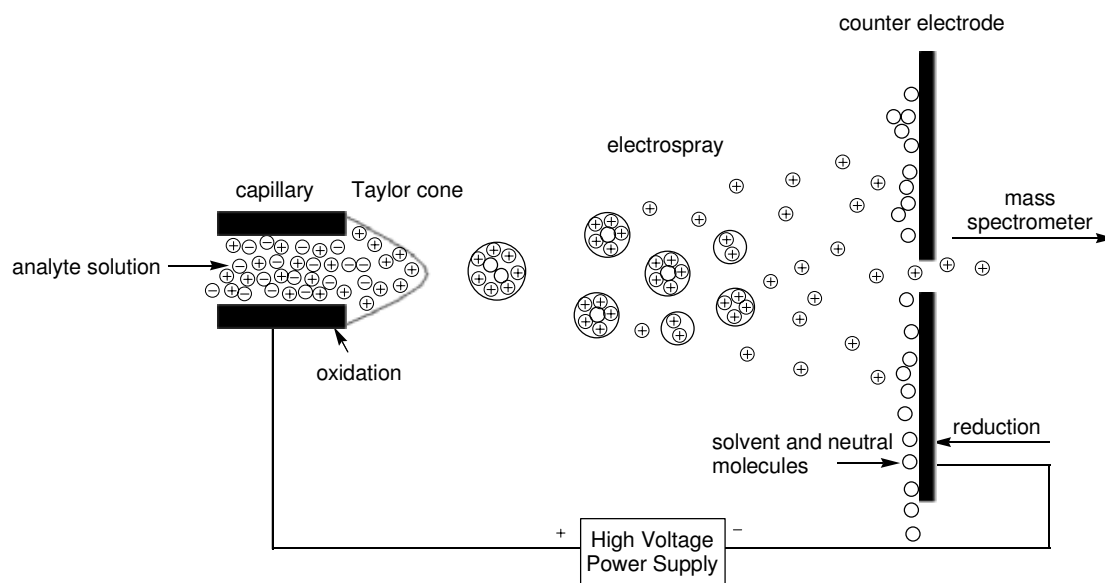
the mass range of most mass analysers. FENN discovered that under electrospray conditions large, non-volatile biomolecules such as proteins (“molecular elephants”, FENN<sup>[18]</sup>) became multiple charged ions leading to mass-to-charge ratios below  $m/z \leq 2000$ .<sup>[12]</sup> Application of a deconvolution algorithm made analysis of molecules with up to 100 000 kDa possible.<sup>[18]</sup>

FENN was awarded the 2002 Nobel Prize in Chemistry for his contributions along with TANAKA, who introduced MALDI (matrix assisted laser desorption ionisation), another “soft” ionisation technique in mass spectrometry.<sup>[18, 19]</sup>

ESI MS is not limited to the analysis of large biomolecules. This method can also be used for the analysis of non-covalent and non-volatile organometallic complexes, usually not amenable to standard ionisation techniques.<sup>[20-22]</sup> Recently, ESI MS has become a powerful tool in probing the reaction mechanism of transition metal- and organocatalysed reactions (see Sections 1.1.3 and 1.1.4). As the ions are transferred directly from solution to the gas-phase, this technique is ideal to monitor short-lived reaction intermediates.

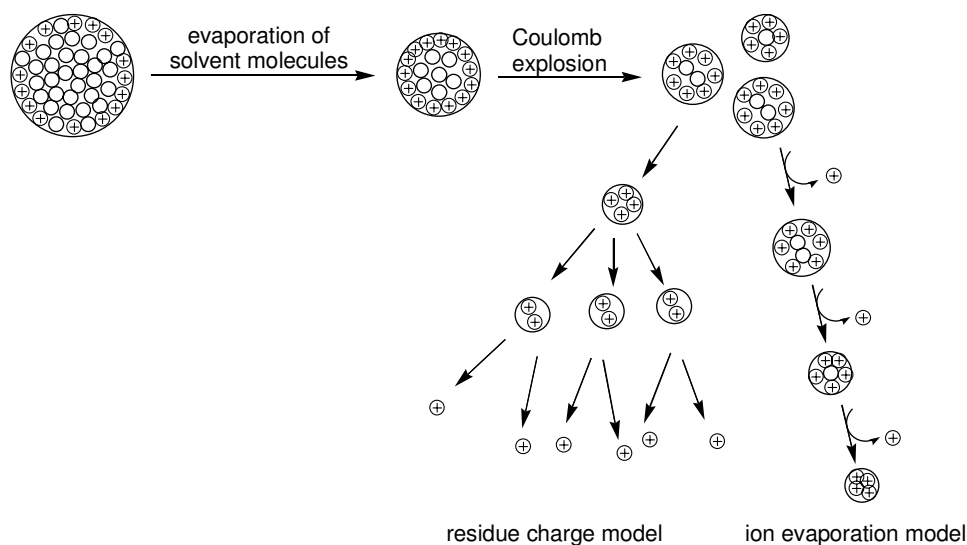
## 1.1.2 Electrospray Ionisation Process

In ESI MS a dilute solution of an analyte is pumped through a capillary at continuous flow. A high voltage (2-5 kV) is applied to the capillary. The resulting electric field gradient between the capillary and the counter electrode leads to the formation of the so-called “TAYLOR cone”<sup>[23]</sup> of the emerging liquid. If the imposed field is high enough, the protruding liquid is dispersed in a fine spray of charged droplets towards the counter electrode. An excess of anions or cations, depending on the applied field, accumulates on the surface of the droplets resulting in a conical spray of charged species due to COULOMB repulsion.<sup>[24]</sup> Evaporation of the solvent molecules by a counter-flow of an inert gas leads to accumulation of charge density in the droplets up to the point where the magnitude of the charge is sufficient to overcome the surface tension holding the droplet together, termed the “RAYLEIGH limit”.<sup>[25]</sup> The droplet then fragments into smaller daughter ions, referred to as “COULOMB explosion” (Figure 1.1).



**Figure 1.1:** Schematic representation of the electrospray ionisation process.

Generation of bare, gaseous analyte ions has been proposed to occur by two possible pathways (Figure 1.2): 1) Continuous COULOMB explosions and evaporation of solvent molecules eventually result in the formation of droplets containing only a single ion. This is called the “charged residue model (CRM)” and was first proposed by DOLE.<sup>[15]</sup> 2) Two meteorologists, IRIBANE and THOMSON, suggested that before the droplets become small enough to contain only one analyte ion, the field strength of the droplet surface becomes strong enough to “evaporate” a surface ion from the droplet into the gas-phase. This is referred to as “ion evaporation model (IEM)”<sup>[26]</sup> The relative importance of the CRM and IEM remains a topic of discussion as both proposed models have yet to be confirmed by experimentation.



**Figure 1.2:** After solvent evaporation Coulomb explosion leads to fragmentation of the droplets. The two proposed models for the transfer of single ions from the liquid to the gas-phase are shown.

The continuous flow of charged ions from the capillary to the counter electrode leads to an accumulation of ions of the opposite charge, which must be charged balanced for the electrospray process continually to operate. KEBARLE and co-workers have described the ES ion source as “an electrolytic cell of a somewhat special kind”.<sup>[27, 28]</sup> Electrochemical reactions are therefore likely to occur during the electrospray process and can have an influence on the analyte solution. This is of special importance when examining organometallic complexes as the oxidation state of the metals can be affected.<sup>[29]</sup>

### 1.1.3 Detection of Organometallic Reaction Intermediates by ESI MS

When using ESI MS the analyte has to be injected into the mass spectrometer as a liquid. This allows direct investigation of reaction products and/or reaction intermediates. To allow detection of intermediates the species must be charged and have a sufficiently long lifetime. The relatively gentle transfer of ions from the liquid to the gas-phase ensures a close relation between the gas-phase ion and solution species.<sup>[30]</sup>

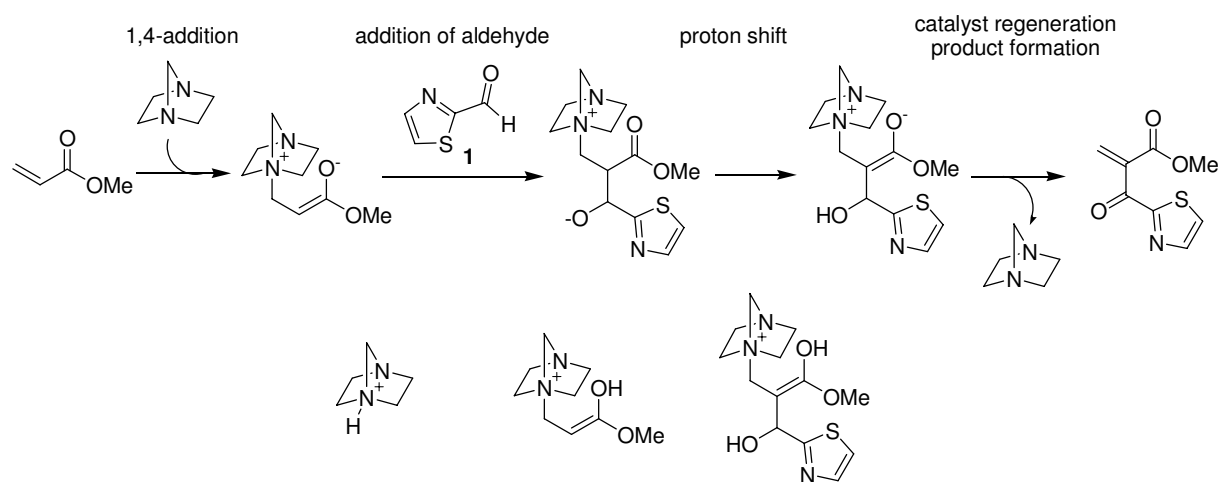
Early ESI MS investigations of ionic reaction intermediates were conducted for phosphine-mediated Wittig, Mitsunobu and Staudinger reactions.<sup>[31]</sup> Ionic intermediates were detected and used to confirm the proposed mechanisms. The disappearance and appearance of ionic species further allowed the reaction progress to be studied.

As ionic reaction intermediates are often involved in homogeneous transition metal catalysed reactions, ESI MS has become the technique of choice for mechanistic investigations and high-throughput screenings of such reactions.<sup>[30]</sup> WILSON and WU reported one of the first investigations involving the detection of nickel(I)-derived complexes in Raney-nickel catalysed C-C-coupling reactions.<sup>[32]</sup> Since then ESI MS has been widely applied in the study of palladium-catalysed transformations such as the Heck reaction,<sup>[33]</sup> the Suzuki-reaction,<sup>[34]</sup> the Stille-reaction,<sup>[35]</sup> oxidative coupling of arene- and arylboronic acids,<sup>[36, 37]</sup> polymerisation of ethane<sup>[10, 11]</sup> and the allylic substitution reaction.<sup>[9]</sup> Furthermore its broad applicability has been demonstrated by investigating different transition metal catalysed processes such as C-H activation reactions with iridium(III)<sup>[38, 39]</sup> and platinum(II),<sup>[40]</sup> catalytic hydrogenation reactions with rhodium<sup>[41, 42]</sup> and ruthenium complexes,<sup>[43, 44]</sup> olefin metathesis,<sup>[45, 46]</sup> catalytic oxidative epoxidation,<sup>[47, 48]</sup> aldehyde olefination with high-valent rhenium compounds,<sup>[49]</sup> Ziegler-Natta polymerisation using an alkylzirconocene catalyst<sup>[50, 51]</sup> and the cobalt-mediated Pauson-Khand reaction.<sup>[52]</sup>

The variety of transition metal complexes and reaction types analysed by ESI MS demonstrates the enormous potential of this fast analytical method. The fact that also catalysed reactions can be successfully studied highlights that even low-concentration species can be selectively monitored by this technique. As CHEN has studied many transition metal catalysed processes with ESI MS and developed more sophisticated instruments, he can certainly be regarded as the pioneer in this area of research.<sup>[30]</sup>

### 1.1.4 ESI MS as Tool for Detection of Reaction Intermediates in Organocatalysis

The first study of an organocatalytic reaction by ESI MS was reported by EBERLIN and co-workers.<sup>[53]</sup> The 1,4-diazabicyclo[2.2.2]octane (DABCO) catalysed Baylis-Hillman reaction was investigated to detect and structurally characterise the reaction intermediates. Although neutral species were expected from the proposed catalytic cycle (Scheme 1.1), these species were assumed to be in equilibrium with their protonated forms in methanolic solution. The reaction was monitored by directly pumping the reaction mixture into the ESI MS source. Reaction intermediates were observed with collision-induced dissociation (CID) measurements, which provided strong evidence for the proposed mechanism.<sup>[54, 55]</sup>

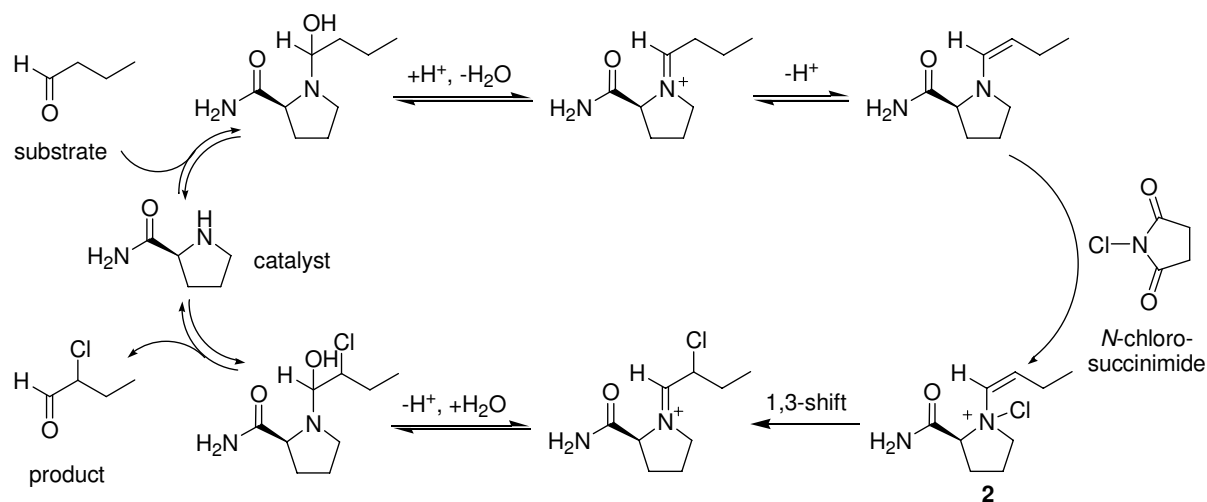


**Scheme 1.1:** Catalytic cycle for the Baylis-Hillman reaction using methyl acrylate and aldehyde **1** with DABCO and observed intermediates by ESI MS.

METZGER and co-workers recently reported an ESI MS study on the proline-catalysed aldol reaction. They characterised all proposed reaction intermediates and also followed the reaction progress over time.<sup>[56]</sup> A more sophisticated application of the technique is their recently developed “dual ESI MS”.<sup>[57]</sup> By spraying the substrate and reagent solution independently in the reaction chamber, dual ESI MS allows observation of reaction intermediates after a few milliseconds. Using this technique, METZGER and co-workers were

able to clarify whether the organocatalysed  $\alpha$ -halogenation of aldehydes proceeded via N-chlorination or direct C-chlorination of the enamine intermediate (Scheme 1.2). After reaction time of milliseconds, fragment ions resulting from CID measurements were unambiguously identified for intermediate **2**, providing evidence for the mechanism to proceed via N-chlorination.

ESI MS has also led to the confirmation of the mechanism in the conjugate *umpolung* reaction.<sup>[58]</sup>



**Scheme 1.2:** Proposed mechanism of the *L*-prolineamide-catalysed  $\alpha$ -chlorination of butanal. By performing CID experiments intermediate **2** was identified to be relevant in the catalytic cycle.

Intermediates in organocatalysis are generally charged (for example iminium ions) or are easily transformed into charged species by protic solvents (such as methanol or water), which makes them amenable to ESI MS detection. In this growing area of research useful methods are needed to aid reaction development and mechanistic understanding. As ESI MS is a very fast and practical technique with instruments available at most research institutes, it can be a very important tool for the investigation of organocatalytic reactions.

### 1.1.5 ESI MS Screening

HINDERLING and CHEN demonstrated an elegant application of ESI MS for the rapid screening of homogeneous polymerisation catalysts.<sup>[10]</sup> ESI MS analysis of a mixture of eight simultaneously synthesised Brookhart-type palladium(II)-olefin polymerisation catalysts and ethylene showed a complex mass spectrum. Multiple, overlapping series of oligo- and polymeric ions corresponded to each catalyst with between zero and one hundred ethylene units added. As the most effective catalyst carries the longest polymer chain, ions of the