

THE NYMPHAEUM OF KAFIZIN





# K A D M O S

ZEITSCHRIFT  
FÜR VOR- UND FRÜHGRIECHISCHE  
EPIGRAPHIK

---

BEGRÜNDET VON ERNST GRUMACH

IN VERBINDUNG MIT:

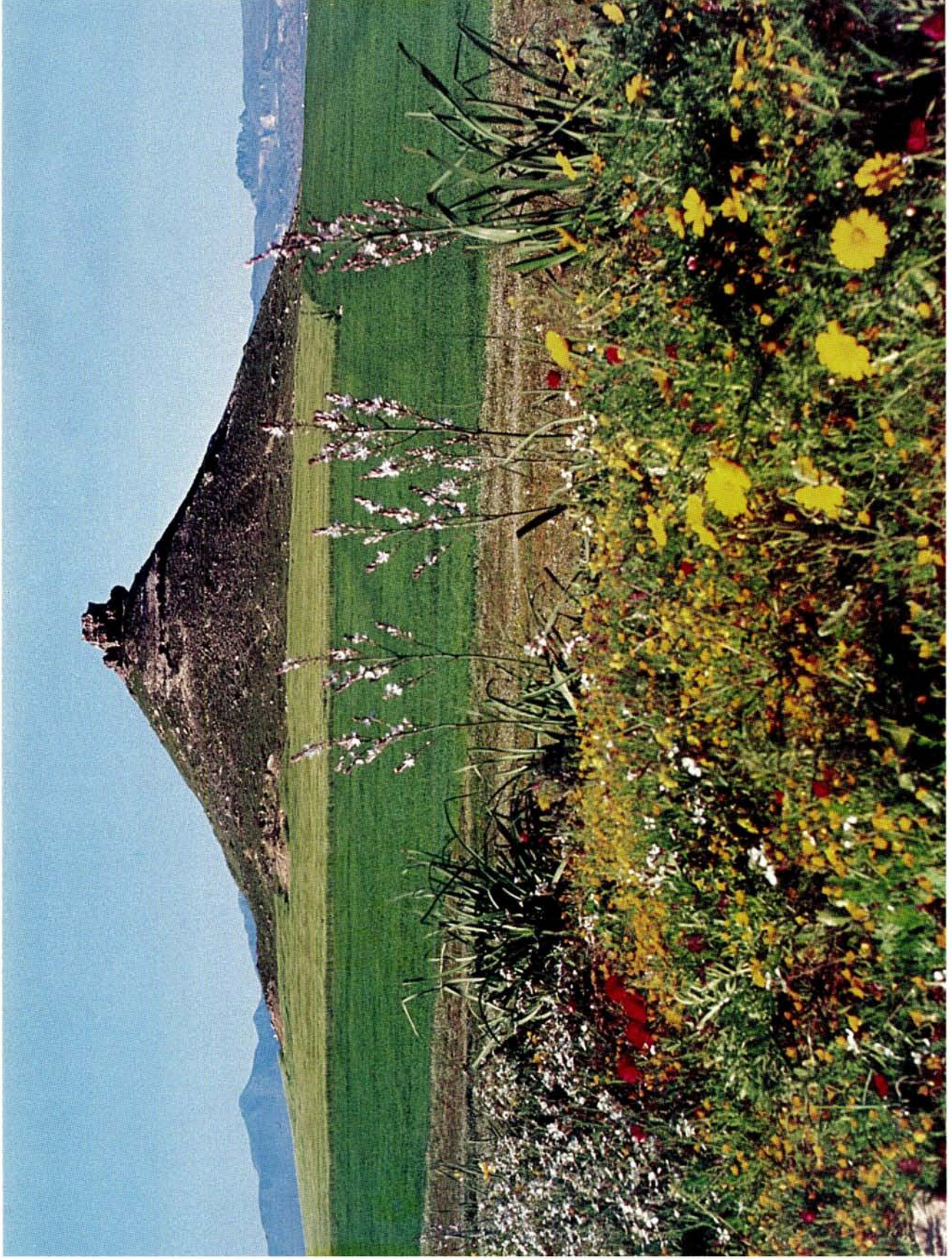
EKREM AKURGAL — ANKARA · STYLIANOS ALEXIOU —  
RETHYMNON · EMMETT L. BENNETT — MADISON · VASSOS  
KARAGEORGHIS — NIKOSIA · COSTIS DAVARAS — HAGIOS  
NIKOLAOS · OLIVIER MASSON — PARIS · PIERO MERIGGI —  
PAVIA · GÜNTER NEUMANN — WÜRZBURG · FRITZ SCHACHER-  
MEYR — WIEN

HERAUSGEGEBEN VON  
WILLIAM C. BRICE

SUPPLEMENT II

WALTER DE GRUYTER · BERLIN · NEW YORK

1980



Frontispiece: The hill of *Kafizin* from the field of *Niphkia*.

# THE NYMPHAEUM OF KAFIZIN

The Inscribed Pottery

by

TERENCE B. MITFORD  
M.A., D.Litt.(Oxon), F.S.A., F.B.A.

Professor and Research Fellow in Classical  
Archaeology in the University of St Andrews,  
Corresponding Member of the German and of the  
Austrian Archaeological Institutes, sometime Member  
of the Institute for Advanced Study, Princeton, N.J.

WALTER DE GRUYTER · BERLIN · NEW YORK

1980

*Library of Congress Cataloging in Publication Data*

Mitford, Terence Bruce.  
The Nymphaeum of Kafizin.  
(Kadmos : Supplement ; 2)  
Bibliography: p. xiv  
Includes indexes.  
1. Inscriptions, Greek—Cyprus. 2. Pottery, Greek—Cyprus.  
3. Kaphizin site, Cyprus. 4. Greeks in Cyprus—Antiquities.  
I. Title. II. Series.  
CN430.M57                      939'.37                      79-28640  
ISBN 3-11-006663-7

*CIP-Kurztitelaufnahme der Deutschen Bibliothek*

**Mitford, Terence B.:**  
The Nymphaeum of Kafizin : the inscribed pottery / by Terence  
B. Mitford. - Berlin, New York : de Gruyter, 1980.  
(Kadmos : Suppl. ; 2)  
ISBN 3-11-006663-7

©

Copyright 1980 by Walter de Gruyter & Co., vormals G. J. Göschen'sche Verlagshandlung — J. Guttentag,  
Verlagsbuchhandlung — Georg Reimer — Karl J. Trübner — Veit & Comp., Berlin 30.

Printed in Great Britain.

Alle Rechte, insbesondere das der Übersetzung in fremde Sprachen, vorbehalten.

Ohne ausdrückliche Genehmigung des Verlages ist es auch nicht gestattet, dieses Buch oder Teile  
daraus auf photomechanischem Wege (Photokopie, Mikrokopie) zu vervielfältigen.

Satz: The Lancashire Typesetting Company Ltd., Bolton

Druck: Taylor & Francis Ltd., Basingstoke

Buchbinder: Lüderitz & Bauer, Berlin

TO MARGARET



## FOREWORD

by William C. Brice  
Editor of *Kadmos*

It was an occasion of much satisfaction for the Editorial Board of *Kadmos* when Professor Mitford agreed to publish as a Supplement to this journal the fruits of his long and patient work in collecting, assembling, recording, analysing and interpreting the inscribed pottery from the hill of Kafizin. This series of Supplements was intended by its founder, Ernst Grumach, to be a vehicle for presenting epigraphic collections from the early and pre-Hellenic world which are too bulky for convenient publication within the compass of learned articles. The first such Supplement, published under his direction in 1967, was Professor Ronald F. Willetts's edition of the Law Code of Gortyn, long known as the finest inscribed monument of the island of Crete. By contrast, this second Supplement presents a corpus of Cypriot inscriptions, hitherto only briefly noticed. Humble rather than monumental, they have largely escaped the attention both of collectors and of scholars: but through the pains, the experience and the acumen of Professor Mitford they have yielded an insight into the economy and culture of Hellenistic Cyprus which is comparable in its depth and detail with that given by the Gortyn Code into the law and government of Archaic Crete.

In the case of collections of this sort where the material is copious, scattered and fragmentary, and will always reward patience with the chance to make refinements, it takes an act of courage to risk a full edition. However, publication now and in this form may be excused on the following counts. After some forty years of toil and study by Professor Mitford, and through the aid of his colleagues and consultants, the general nature and chronology of these inscriptions are now certainly known, particularly as the records are of a formulaic and somewhat repetitive character, and were accumulated over a limited period

of some seven years. Further field or museum work will doubtless supplement what is here said about the scripts, the dialect, the toponyms, the guilds and the transactions, but on all these topics the main conclusions that can be reached from the study of the remains may now be considered as established.

Likewise with regard to the ceramics, though further joins will certainly be possible, the general range of types is now clear, since most are represented by several examples. Their variety and novelty justify full publication, while the manifestly intimate relations between the vessels and their inscriptions have persuaded us that in every case the pot and its *graffiti* should be presented together. The basic system of reference throughout, therefore, is to the vessel with its inscription, always noticed by its number in heavy type. The several indices, of course, make consultation easier for scholars with specialized tastes or interests.

It is a pity, as Professor Mitford explains, that in spite of the most assiduous enquiries and searches Dr Dikaïos's records of the archaeology of the site have not been recovered. It was considered, however, that this misfortune should not be allowed to delay publication. For one thing, there is no question of stratigraphy, since the shrine was only in use for a few years; for another, the details of the lay-out of this rustic temple do not bear seriously on the main concern of this publication, which is the inscribed vessels. It is hoped, then, that this deficiency will be excused, and that when conditions on the island become more settled a new survey of the hill will be prepared and published.

Finally, the Editorial Board would wish to add their gratitude to that expressed by Professor Mitford to the several financial guarantors of this publication, who have in every case extended their generosity to the utmost in a season of grievous stringency in order that the book might appear.

### POSTSCRIPT

Very regrettably, Terence Mitford died suddenly at his home in Fife on November 8, 1978, when first proofs were beginning to come through. It is sad that he did not see *Kafizin*, which he regarded as his *magnum opus*, completed, but he had arranged it in detail and he knew that its publication was secure. I am grateful for help with subsequent proof-reading and page design to the author's son and literary executor, Dr Timothy Mitford, to my colleagues Professor Olivier Masson and Professor Günter Neumann, and to my friendly and resourceful typesetters Mr Gordon Gratrix and Mr John Spibey.

## ACKNOWLEDGMENTS

To the indebtedness which I declared in 1950 (*CQ* xlv 1950, 100 and n. 1)—namely to the Trustees of the Craven Fund, to the Leverhulme Foundation, to the Carnegie Trust for the Universities of Scotland, and to the Court of the University of St Andrews—I have now, twenty-five years later more debts to add. For the early years of excavation and restoration I remember with much gratitude three friends. The late Porphyrios Dikaïos, then Curator of the Cyprus Museum and subsequently from 1960 to 1962 Director of the Department of Antiquities, shared with me responsibility for the excavations of June and July, 1949, and thereafter he gave me the freedom of the Museum's admirable technical facilities. Chrysostomos Paraskeva, native of *Dhali* and until last year Senior Attendant to the Cyprus Museum, was not merely the vastly experienced foreman to the excavations, but in the years which followed he devoted many months to the reconstruction and restoration of these pots and utensils: he thought about them at night and in the morning was the first to enter the laboratory to verify the night's ideas: as they stand, they will be his memorial. And Alex Kingaby, for many years proprietor of the Astoria Hotel in Nicosia, was yet another *nympholept*: if rains had fallen, his crowded bar was peremptorily closed down, its customers herded into a fleet of taxis, rushed to *Kafizin* and there marshalled to collect sherds—and, quite incidentally, a redoubled thirst. Throughout the year he held a watching brief on my behalf over the site, and he gave many weeks to the work of restoration in Nicosia. If Porphyrios therefore may be called the *Cavour* of *Kafizin*, Chrysostomos was its *Mazzini*, and Alex its *Garibaldi*.

In 1961 and again in 1967, as a member of the Institute of Advanced Study at Princeton, I was privileged to meet and to discuss my ceramic problems with Professor Homer Thompson and the late Lucy Talcott, both acknowledged masters of Athenian pottery. To their generosity and to the hospitality and encouragement of the Institute I owe more than I care to tell.

More recently I have availed myself of my good fortune in having Professor K. J. Dover as a colleague; and some of his suggestions, more particularly on **227** and **291**, I have found very valuable. Mr T. C. Skeat, until lately of the British Museum, I have consulted on matters of Ptolemaic chronology; Professor Anna Morpurgo Davies of Somerville College, Oxford, and Professor Günter Neumann of Würzburg on Greek dialectology. I thank these friends for their learning and their kindness—but I hasten to add that I remain responsible for all that I have here to say.

That this book should have publishers as distinguished as de Gruyter of Berlin as a *Beiheft* of *Kadmos* I owe to the good offices of Mr W. C. Brice of the University of Manchester, the editor of that periodical. And he has put me still more deeply in his debt by inking in all of my 309 facsimile drawings with the expertise of a cartographer.

Finally, *prima dicte mihi, summa dicende Camena*, I turn once more to the University of St Andrews, which I have the honour and the pleasure still to serve. As universities proliferate, so do seats of learning become the rarer and more precious; and I am very conscious that my way has lain in pleasant places. The Court of the University of St Andrews, presided over by Sir Malcolm Knox and now by Principal Steven Watson, has been open-handed and encouraging to me throughout—and I can do no better now than say *thank you* from the bottom of my heart. Indeed, without their generous support and the comparable generosity of the British Academy, the Craven Fund of the University of Oxford, the Carnegie Trust, and Mr Leon Pomerance, this book would never have reached the printers' hands.

February, 1975

T.B.M.  
Ardlogie

## CONTENTS

<p>FRONTISPIECE: The hill of <i>Kafizin</i></p> <p>FOREWORD by William C. Brice . . . . . ix</p> <p>ACKNOWLEDGMENTS . . . . . x</p> <p>ABBREVIATIONS . . . . . xiii</p> <p>SELECTED BIBLIOGRAPHY . . . . . xiv</p> <p>SYMBOLS USED IN EPIGRAPHIC TEXTS . . . . . xv</p> <p>PLATES</p> <p style="padding-left: 2em;">Plate I a The hill of <i>Kafizin</i> . . . . . xvii</p> <p style="padding-left: 4em;">b The Nymph's grotto . . . . . xvii</p> <p style="padding-left: 2em;">Plate II a The terrace . . . . . xviii</p> <p style="padding-left: 4em;">b The water cistern . . . . . xviii</p> <p style="padding-left: 2em;">Plate III <b>40</b> . . . . . xix</p> <p style="padding-left: 2em;">Plate IV <b>117</b> . . . . . xx</p> <p style="padding-left: 2em;">Plate V <b>138(b)</b> . . . . . xxi</p> <p style="padding-left: 2em;">Plate VI <b>248</b> . . . . . xxii</p> <p style="padding-left: 2em;">Plate VII <b>266</b> . . . . . xxiii</p> <p style="padding-left: 2em;">Plate VIII <b>302</b> . . . . . xxiv</p> <p>PART ONE: PROLEGOMENA</p> <p style="padding-left: 2em;">DISCOVERY OF THE SITE . . . . . 3</p> <p style="padding-left: 2em;">EXCAVATION AND DESCRIPTION . . . . . 4</p> <p style="padding-left: 2em;">SUBSEQUENT INVESTIGATIONS . . . . . 4</p> <p style="padding-left: 2em;">DOCUMENTATION . . . . . 6</p> <p style="padding-left: 2em;">METHOD OF PRESENTATION . . . . . 6</p> <p>PART TWO: THE CERAMIC MATERIAL AND INSCRIPTIONS</p> <p style="text-align: center; padding-left: 10em;">INSCRIPTIONS</p> <p style="padding-left: 2em;">FINE WARE . . . . . <b>1-55</b> 9</p> <p style="padding-left: 4em;">i Bowls with incurved rim . . . . . 9</p> <p style="padding-left: 6em;">(a) Glazed . . . . . <b>1-5</b> 9</p> <p style="padding-left: 6em;">(b) Unglazed . . . . . <b>6-21</b> 11</p> <p style="padding-left: 4em;">ii Glazed Bowls with everted rim . . . . . <b>22-28</b> 18</p> <p style="padding-left: 4em;">iii Megarian Bowls . . . . . 23</p> <p style="padding-left: 6em;">(a) Glazed . . . . . <b>29-32</b> 23</p> <p style="padding-left: 6em;">(b) Unglazed . . . . . <b>33-34</b> 24</p> <p style="padding-left: 4em;">iv <i>Mastos</i> . . . . . 25</p> <p style="padding-left: 4em;">v <i>Skyphos</i> . . . . . <b>35</b> 25</p> <p style="padding-left: 4em;">vi Miniature Glazed Mortar . . . . . <b>36</b> 26</p> <p style="padding-left: 4em;">vii Glazed Juglet . . . . . <b>37</b> 26</p>	<p>viii Glazed <i>Oinochoe</i> . . . . . <b>38</b> 27</p> <p>ix <i>Guttus</i> . . . . . <b>39</b> 27</p> <p>x Baby feeder . . . . . 28</p> <p>xi <i>Unguentarium</i> . . . . . 29</p> <p>xii <i>Kantharos</i> . . . . . <b>40-43</b> 29</p> <p>xiii <i>Lagynos</i> . . . . . 32</p> <p style="padding-left: 2em;">(a) Glazed . . . . . <b>44</b> 33</p> <p style="padding-left: 2em;">(b) Unglazed . . . . . <b>45-55</b> 34</p> <p>PLAIN WARE . . . . . <b>56-284</b> 44</p> <p style="padding-left: 2em;">i Coarse Bowls . . . . . <b>56-61</b> 44</p> <p style="padding-left: 2em;">ii Shallow Bowls . . . . . 48</p> <p style="padding-left: 4em;">(a) Delicate, carinated, without handle . . . . . <b>62</b> 48</p> <p style="padding-left: 4em;">(b) With finger-grip and false base ring . . . . . <b>63-78</b> 49</p> <p style="padding-left: 4em;">(c) With finger-grip and rounded bottom . . . . . <b>79</b> 60</p> <p style="padding-left: 4em;">(d) With rounded bottom and no handle . . . . . <b>80</b> 61</p> <p style="padding-left: 4em;">(e) With false base-ring and no handle . . . . . <b>81-94</b> 62</p> <p style="padding-left: 4em;">(f) With flat base and no handle . . . . . <b>95-102</b> 69</p> <p style="padding-left: 4em;">(g) With false base-ring and ledge-handle . . . . . <b>103-108</b> 75</p> <p style="padding-left: 4em;">(h) Miscellaneous . . . . . <b>109-112</b> 80</p> <p style="padding-left: 2em;">iii Mortar (τριβιον) . . . . . <b>113-115</b> 82</p> <p style="padding-left: 2em;">iv Frying Pan . . . . . <b>116-118</b> 85</p> <p style="padding-left: 2em;">v Pan . . . . . <b>119-132</b> 90</p> <p style="padding-left: 2em;">vi Porringer (ἀθαροφόρον) . . . . . <b>133, 134</b> 100</p> <p style="padding-left: 2em;">vii Fish Plate . . . . . <b>135, 136</b> 102</p> <p style="padding-left: 2em;">viii Basket . . . . . <b>137</b> 105</p> <p style="padding-left: 2em;">ix <i>Lekane</i> . . . . . 106</p> <p style="padding-left: 4em;">(a) Shallow . . . . . <b>138-161</b> 106</p> <p style="padding-left: 4em;">(b) Medium . . . . . <b>162-189</b> 123</p> <p style="padding-left: 4em;">(c) Deep . . . . . <b>190-212</b> 140</p> <p style="padding-left: 2em;">x <i>Pantabroktion</i> (παντάβροκτον) . . . . . <b>213-215</b> 154</p> <p style="padding-left: 2em;">xi <i>Chidbrochon</i> (χιδρόβροχον) . . . . . <b>216-226</b> 158</p> <p style="padding-left: 2em;">xii Jar with loop handles . . . . . <b>227</b> 167</p> <p style="padding-left: 2em;">xiii Jar with basket handle (οἰνοφόρον) . . . . . <b>228</b> 170</p> <p style="padding-left: 2em;">xiv Cooking Pot . . . . . <b>229-234</b> 171</p> <p style="padding-left: 2em;">xv Casserole . . . . . <b>235</b> 174</p> <p style="padding-left: 2em;">xvi <i>Chous</i> . . . . . <b>236-246</b> 175</p> <p style="padding-left: 2em;">xvii Jug with twin juglets (ὑδρίον, ὑδροφόρον) . . . . . <b>247-250</b> 181</p> <p style="padding-left: 2em;">xviii Jug (ὑδρίον) . . . . . <b>251-261</b> 185</p> <p style="padding-left: 2em;">xix Pitcher (ὑδροφόρον) . . . . . <b>262-273</b> 196</p> <p style="padding-left: 2em;">xx Pitcher with pointed base . . . . . <b>274</b> 211</p> <p style="padding-left: 2em;">xxi <i>Hydria</i> (ὑδρία) . . . . . <b>275-277</b> 212</p> <p style="padding-left: 2em;">xxii Amphora . . . . . 214</p> <p style="padding-left: 4em;">(a) Imported . . . . . <b>278-282</b> 217</p> <p style="padding-left: 4em;">(b) With metal prototype . . . . . <b>283</b> 214</p> <p style="padding-left: 2em;">xxiii Column Crater . . . . . <b>284</b> 218</p> <p style="padding-left: 2em;">xxiv <i>Rhyton</i> . . . . . 219</p>
--	--

UTENSILS . . . . .	<b>285–309</b>	220
i Meat tray (σπλαγγνοεντεριφόρον) . . . . .	<b>285–287</b>	220
ii <i>Pithos</i> Lid . . . . .	<b>288–295</b>	223
iii <i>Epinetron</i> . . . . .	<b>296–298</b>	232
iv <i>Amis</i> . . . . .	<b>299–301</b>	234
v Incense Burner (θυμαστήριον) and Stand . . . . .	<b>302–305</b>	237
vi Hand Lamp . . . . .	<b>306</b>	240
vii Candelabrum (λόχνος) . . . . .	<b>307–309</b>	241
UNINSCRIBED VESSELS . . . . .		246

#### PART THREE: ANALYSIS

Ch. 1 The Chronology of <i>Kafizin</i> . . . . .	251
Ch. 2 The Topography of <i>Kafizin</i> . . . . .	253
Ch. 3 The Company of Zenon . . . . .	256
Ch. 4 The Potters and their Pots . . . . .	259
Ch. 5 The Cult of the Nymph . . . . .	261
Ch. 6 The Syllabary and Cypro-Arcadian Dialect	264
Ch. 7 The Alphabets of <i>Kafizin</i> and the Κοινή . . . . .	265
Ch. 8 Conclusion . . . . .	266

#### INDICES

1 Personal Names . . . . .	267
2 Topographical . . . . .	269
3 Religion . . . . .	270
4 Chronology . . . . .	272
5 Abbreviations, Numbers, Symbols . . . . .	273
6 Grammar and Orthography . . . . .	273
7 Vocabulary . . . . .	274
8 Subject Index . . . . .	280

#### ILLUSTRATIONS

Grid 1 The Signary of Idalium, ca. 470 B.C. . . . .	281
Grid 2 The Signary of Idalium, early 4th century B.C. . . . .	282
Grid 3 The Signaries of <i>Kafizin</i> . . . . .	283
Figure 1 The Alphabets of <i>Kafizin</i> . . . . .	284
Map 1 Central Cyprus . . . . .	285
Map 2 <i>Kafizin</i> , with Leontari Vouno. . . . .	286

## CATALOGUE OF SCRIPTS

#### THE INSCRIPTIONS

##### SYLLABIC

- (a) Eteocyprian: **56**
- (b) Cypro-Arcadian: **23, 39, 113(a), 114(b), 117(b), 118(b), 132(b), 133(b), 135(d), 136, 145(a), 148, 156, 158(b), 159, 161(b), 166(a), 167, 168, 169(a), 170(a), 171–180, 190(b), 191, 195(b), 198, 201, 203(b), 206(b), 207, 212, 213(b), 214(b), 216, 217(b), 218(b), 220(b), 224(a), 225, 229(b), 230(a), 231, 232(a), 233, 252, 266(b), 267(b), 268(b), 269(b), 270, 271(b), 275(b), 288, 292, 303**

##### DIGRAPHIC

- 113, 114, 117, 118, 132, 133, 135, 145, 158, 161, 166, 169, 170, 190, 195, 203, 206, 213, 214, 217, 218, 220, 224, 229, 230, 232, 266–269, 271, 275**

##### ALPHABETIC

- 1–22, 24–38, 40–112, 115, 116, 119–131, 134, 137–144, 146, 147, 149–155, 157, 160, 162–165, 181–189, 192–194, 196, 197, 199, 200, 202, 204, 205, 208–211, 215, 219, 221–223, 226–228, 234–251, 253–265, 272–274, 276–287, 289–291, 293–302, 304–309**

## ABBREVIATIONS

<i>AJA</i>	<i>American Journal of Archaeology</i> 1897 ff.	<i>IGR</i>	<i>Inscriptiones Graecae ad res Romanas pertinentes</i> 1, 3 and 4 (Paris, 1901–1927)
<i>AM</i>	<i>Mitteilungen des Deutschen Archäologischen Instituts, Athenische Abteilung</i> (1876 ff.)	<i>Inscr. Kourion</i>	T. B. Mitford, <i>The Inscriptions of Kourion</i> (Philadelphia, 1971)
<i>Archaeology</i>	<i>Archaeology, A Magazine dealing with the Antiquity of the World</i> , published quarterly (Boston, Mass., 1948 ff.)	<i>Inscr. Salamis</i>	T. B. Mitford and I. K. Nicolaou, <i>Inscriptions from Salamis</i> (Nicosia, 1974)
<i>Arch. Pap.</i>	<i>Archiv für Papyrusforschung und verwandte Gebiete</i> (Berlin and Leipzig, 1900 ff. with interruption)	<i>JEA</i>	<i>Journal of Egyptian Archaeology</i> (London, 1914 ff.)
<i>Athenian Agora</i>	<i>Excavations of the Athenian Agora, Hesperia</i> (1932) ff.	<i>JHS</i>	<i>Journal of Hellenic Studies</i> (London, 1880 ff.)
<i>Attic RF Vases</i>	J. D. Beazley, <i>Attic Red Figure Vases</i> (Oxford, 1942)	<i>LBW</i>	P. LeBas et W. H. Waddington, <i>Voyage archéologique en Grèce et en Asie Mineure</i> 3, 1 (Paris, 1870)
<i>BCH</i>	<i>Bulletin de correspondance hellénique</i> (Paris, 1877 ff.)	<i>LSJ</i>	Liddell, Scott and Jones, <i>Greek English Lexicon</i> , 9th Edition (Oxford, 1940)
<i>Bj</i>	<i>Bursian's Jahresberichte</i>	<i>Minoica</i>	<i>Minoica: Festschrift zum 80 Geburtstag von Johannes Sundwall</i> (Berlin, 1958)
<i>BMI</i>	<i>The Collection of Ancient Greek Inscriptions in the British Museum</i> (1874–1916)	<i>Mizraim</i>	<i>Journal of Papyrology, Egyptology, History of Ancient Laws etc.</i> (New York, 1932 ff.)
<i>BSA</i>	<i>Annual of the British School at Athens</i> (1894 ff.)	<i>Muséon</i>	( <i>Le Muséon, Revue . . .</i> ) (Louvain, 1882 ff.)
<i>CERP</i>	A. H. M. Jones, <i>Cities of the Eastern Roman Provinces</i> (Oxford, 1937)	<i>NSI</i>	G. A. Cooke, <i>North Semitic Inscriptions</i> (Oxford, 1903)
<i>Chrest.</i>	L. Mitteis and U. Wilcken, <i>Grundzüge u. Chrestomathie der Papyruskunde</i> (Leipzig and Berlin, 1912)	<i>OGI</i>	W. Dittenberger, <i>Orientalis Graeci inscriptiones selectae</i> (Leipzig, 1903, 1905)
<i>CIG</i>	<i>Corpus Inscriptionum Graecarum</i> , ed. A. Boeckh et alii (1825–1877)	<i>Opusc. Arch.</i>	<i>Opuscula Archaeologica. Skrifter utgivna av Svenska Institutet i Rom</i> (Lund, 1945 ff.)
<i>CISem</i>	<i>Corpus Inscriptionum Semiticarum</i> (Académie des inscriptions et de Belles Lettres) 1, <i>Inscriptiones Phoeniciae</i> (Paris, 1881)	<i>Opusc. Ath.</i>	<i>Opuscula Atheniensia. Skrifter utgivna av Svenska i Athen</i> (Lund, 1953 ff.)
<i>CMC</i>	J. L. Myres and M. Ohnefalsch-Richter, <i>Catalogue of the Cyprus Museum</i> (Oxford, 1899)	<i>Öst. Jahresh.</i>	<i>Jahreshefte des Österreichischen Archäol. Institutes in Wien</i> (Vienna, 1898 ff.)
<i>CMGuide</i>	P. Dikaios, <i>A Guide to the Cyprus Museum</i> , Second Edition (Nicosia, 1953)	<i>Pots and Pans</i>	B. A. Sparkes and L. Talcott, <i>Pots and Pans of Classical Athens</i> (Princeton, N.J.; 3rd Printing, 1964)
<i>CQ</i>	<i>Classical Quarterly</i> (London, 1907 ff.)	<i>RA</i>	<i>Revue Archéologique</i> (Paris, 1844 ff.)
<i>DAKM</i>	<i>Danske Arkaeologisk-kunsthistoriske Meddelelser</i> (Kopenhagen, 1949 ff.)	<i>RDAC</i>	<i>Annual Report of the Department of Antiquities, Cyprus</i> (Nicosia, 1914—with interruptions)
Ἔφ. Ἀρχ.	since 1910 Ἔφ. Ἐφ., Journal published by the Archaeological Service in Athens (Athens, 1837 ff.)	<i>RE</i>	Pauly—Wissowa—Kroll—Mittelhaus, <i>Realencyclopädie der classischen Altertumswissenschaft</i> (Stuttgart, 1894 ff.)
<i>FHG</i>	C. Müller, <i>Fragmenta Historicorum Graecorum</i> (Paris, 1841–1870)	<i>REG</i>	<i>Revue des études grecques</i> (Paris, 1888 ff.)
<i>Glotta</i>	<i>Glotta, Zeitschrift für griech. u. lat. Sprache</i> (Göttingen, 1907 ff.)	<i>R. Phil.</i>	<i>Revue de philologie, de littérature et d'histoire anciennes</i> (Paris, 1877 ff.)
<i>Hermes</i>	<i>Zeitschrift für class. Philologie</i> , 1866 ff.	<i>SCE</i>	<i>The Swedish Cyprus Expedition</i> (Stockholm, 1927 ff.)
<i>Hesperia</i>	<i>Journal of the American School of Classical Studies in Athens</i> , 1932 ff.	<i>SEG</i>	<i>Supplementum Epigraphicum Graecum</i> (Leyden, 1923–1971)
<i>ICret</i>	<i>Inscriptiones Creticae I–IV</i> , Rome, 1935–1950	<i>SIG<sup>3</sup></i>	W. Dittenberger, <i>Sylloge Inscriptionum Graecarum</i> , Edition 3 (Leipzig, 1915–1921)
<i>IGS</i>	O. Masson, <i>Inscriptiones chypriotes syllabiques</i> (Paris, 1961)	<i>UPZ</i>	U. Wilcken, <i>Urkunden der Ptolemäerzeit</i> (Berlin and Leipzig, 1922 and 1935 ff.)
<i>IG</i>	<i>Inscriptiones Graecae consilio et auctoritate Academiae litterarum regiae borussicae editae</i> (Berlin, 1873 ff.)	n.	note
		no.	number
		S	sign

## SELECTED BIBLIOGRAPHY

- Avi-Yonah, M. *Abbreviations in Greek Inscriptions* (O.U.P., London, 1940)
- Bean, G. E. and T. B. Mitford *Journeys in Rough Cilicia* (Vienna, 1970)
- Beazley, J. D. *Attic Red-Figure Vases* (Oxford, 1942)
- Bechtel, F. *Die historischen Personennamen des Griechischen bis zur Kaiserzeit* (Halle, 1917)
- Breccia, E. *Iscrizioni greche e latine, Musée d'Alexandrie* (Cairo, 1911)
- Broneer, O. *Terracotta Lamps, Corinth* Vol. IV Part 2 (Cambridge, Mass., 1930)
- Buck, C. D. *The Greek Dialects: Grammar, Selected Inscriptions, Glossary* (Chicago, 1955)
- Cesnola, L. P. di *Atlas of the Cesnola Collection in the Metropolitan Museum, New York* Vols. 1-3 (New York, 1885-1903)
- Foraboschi, D. *Onomasticon Alterum Papyrologicum* (Milan, 1966)
- Forbes, R. J. *Studies in Ancient Technology* Vol. 4 (Leiden, 1964)
- Gjerstad, E. *The Swedish Cyprus Expedition* Vols. 1-4 (Stockholm, 1927 ff.)
- Goldman, H. *Excavations at Gözlu Kale, Tarsus* (Princeton, 1950)
- Gunnis, R. *Historic Cyprus* (Methuen, 1936)
- Herzog, R. *Koische Forschungen und Funde* (Leipzig, 1899)
- Hill, G. F. *A History of Cyprus* Vol. 1 (Cambridge, 1940)
- Hoffmann, O. *Die griechischen Dialekte* Vol. 1 (Göttingen, 1891)
- Jones, A. H. M. *Cities of the Eastern Roman Provinces* (Oxford, 1937)
- Launey, M. *Recherches sur les armées hellénistiques* Vols. 1-2 (Paris, 1949-1950)
- Masson, O. *Inscriptions chypriotes syllabiques* (Paris, 1961)
- Masson, O. and M. Szyner *Recherches sur les Phéniciens à Chypre* (Paris, 1972)
- Myres, J. L. *Handbook of the Cesnola Collection* (New York, 1914)
- Pape, W. and G. Benseler, *Wörterbuch der griechischen Eigennamen*, 3rd Reprint (Brunswick, 1911)
- Poland, F. *Geschichte des griechischen Vereinswesens* (Leipzig, 1909)
- Préaux, C. *L'économie royale des Lagides* (Brussels, 1939)
- Preisigke, F. *Namenbuch enthaltend alle griechischen, lateinischen, ägyptischen u.s.w. Menschnennamen in griechischen Urkunden Ägyptens* (Heidelberg, 1922)
- Preisigke, F. *Wörterbuch der griechischen Papyrusurkunden* (Heidelberg, 1924 ff.)
- Raubitschek, A. *Dedications from the Athenian Acropolis* (Cambridge, Mass., 1949)
- Robert, L. *Bibliothèque nationale . . . Collection Froehner, 1, Inscriptions grecques* (Paris, 1936)  
*Bulletin épigraphique*, appearing annually in *REG*
- Robinson, D. M. *Excavations at Olynthus Part V, Mosaics, Vases and Lamps of Olynthus* (Baltimore, 1933)
- Rostovtzeff, M. *A Large Estate in Egypt in the 3rd Century B.C.* (Madison, 1922)  
*The Social and Economic History of the Hellenistic World*, Vols. 1-3 (Oxford, 1953)
- Samuel, A. D. *Ptolemaic Chronology* (Munich, 1962)
- Schwyzer, E. *Dialectorum Graecarum exempla epigraphica potiora* (Leipzig, 1923)
- Skeat, T. C. *The Reigns of the Ptolemies, Mizraim VI*, 1937
- Stores, R. and B. J. O'Brien *The Handbook of Cyprus*, 9th Issue (London, 1930)
- Thompson, H. A. *Two Centuries of Hellenistic Pottery*, Hesperia III, 1934
- Thumb, A. and A. Scherer *Handbuch der griechischen Dialekte* Vol. 2 = 2nd Edition (Heidelberg, 1959)
- Waage, F. O. *Antioch-on-the-Orontes*, IV Part 1: Ceramics and Islamic Coins (Princeton, 1948)
- Welles, C. B. *Gerasa, The Inscriptions in Gerasa, City of the Decapolis*, pp. 353-616 (New Haven, 1938)

## SYMBOLS USED IN EPIGRAPHIC TEXTS

### a. Alphabetic

[ ]	enclose letters believed to have been originally engraved but now lost or illegible.	- - -	dashes represent an uncertain number of lost or illegible letters.
( )	enclose letters added to complete an abbreviation of the engraver.	A dot placed under a letter indicates that part of the letter is lost or illegible, but that what remains is compatible with, though it does not necessarily postulate, the proposed restoration. A damaged letter which can be identified with certainty is not dotted.	
< >	enclose <i>either</i> letters for which the engraver has wrongly substituted other letters <i>or</i> letters accidentally omitted by the engraver.	v	represents a letter-space left vacant by the engraver, each v representing a single space.
{ }	enclose superfluous letters accidentally added by the engraver.	<i>vac.</i>	indicates that the engraver has left vacant an uncertain number of letter-spaces in the middle of a text.
[ ]	enclose letters deliberately effaced in antiquity after being engraved.	<i>vacat</i>	indicates that the engraver has left vacant the remainder of the line.
. . .	dots represent lost or illegible letters of which no restoration is offered, their number equal to the number of missing letters.		indicates the beginning of a fresh line in the original inscription.
- x -	indicates that x letters are lost or illegible.		indicates the beginning of every fifth such line.

### b. Syllabic

[ ]	enclose signs believed to have been originally engraved but now lost or illegible— <i>or</i> the evaluation of such signs.	In the evaluation of syllabic signs CAPITALS denote that the value offered is in the editor's estimation doubtful.	
. . .	dots represent lost or illegible signs for which no restoration is offered, their number equal to the probable number of missing signs.	v	represents a sign-space left vacant by the engraver, each v representing a single space.
- x -	indicates that x signs are lost or illegible.	<i>vac.</i>	indicates that the engraver has left vacant an uncertain number of sign-spaces in the middle of a text.
- - -	dashes represent an uncertain number of lost or illegible signs.	<i>vacat</i>	indicates that the engraver has left vacant the remainder of the line.



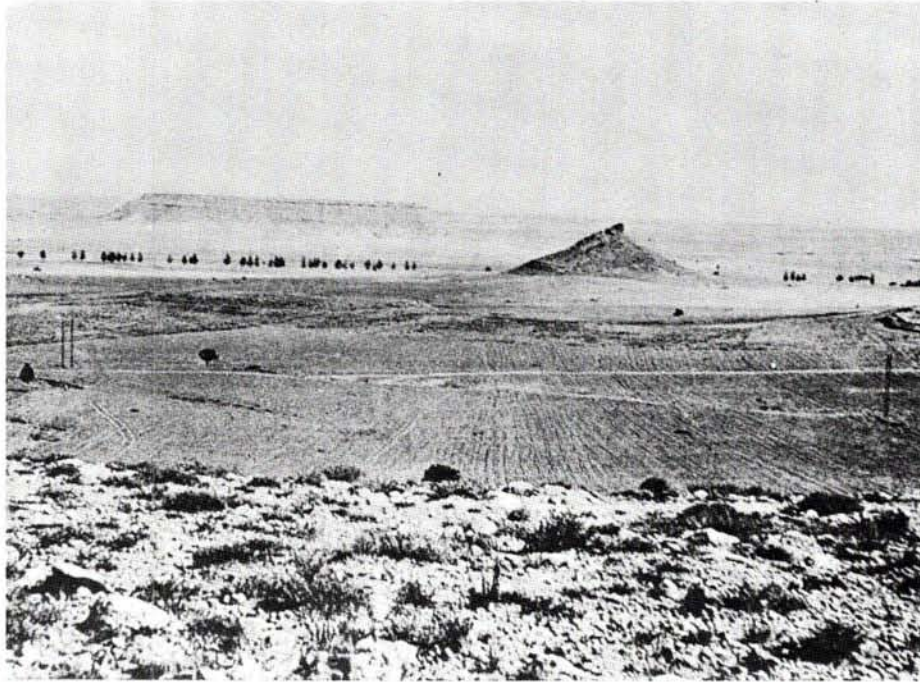
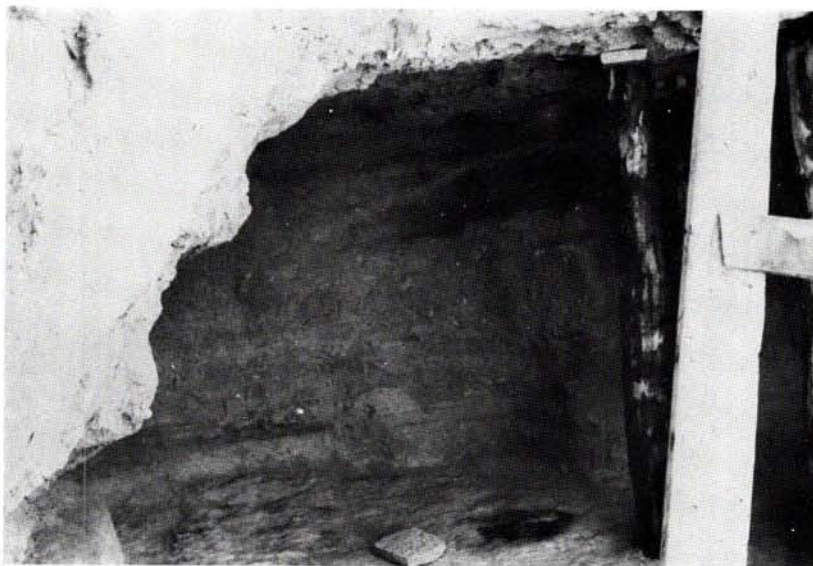


Plate I a A view towards the ENE from the low cliffs of *Leontari Vouno*, looking across the field of *Niphkia* towards the hill of *Kafizin*.



b The Nymph's grotto near the summit of the hill of *Kafizin*.

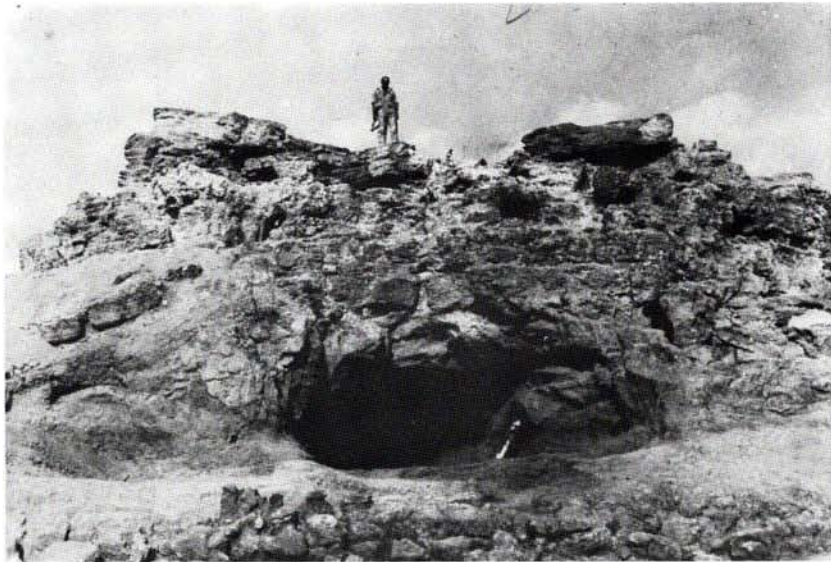


Plate II a The terrace in front of the Nymph's Grotto on the hill of *Kafizin*.



b The water cistern dug into the terrace.



Plate III Inscription No. 40 on kantharos (K. 37).

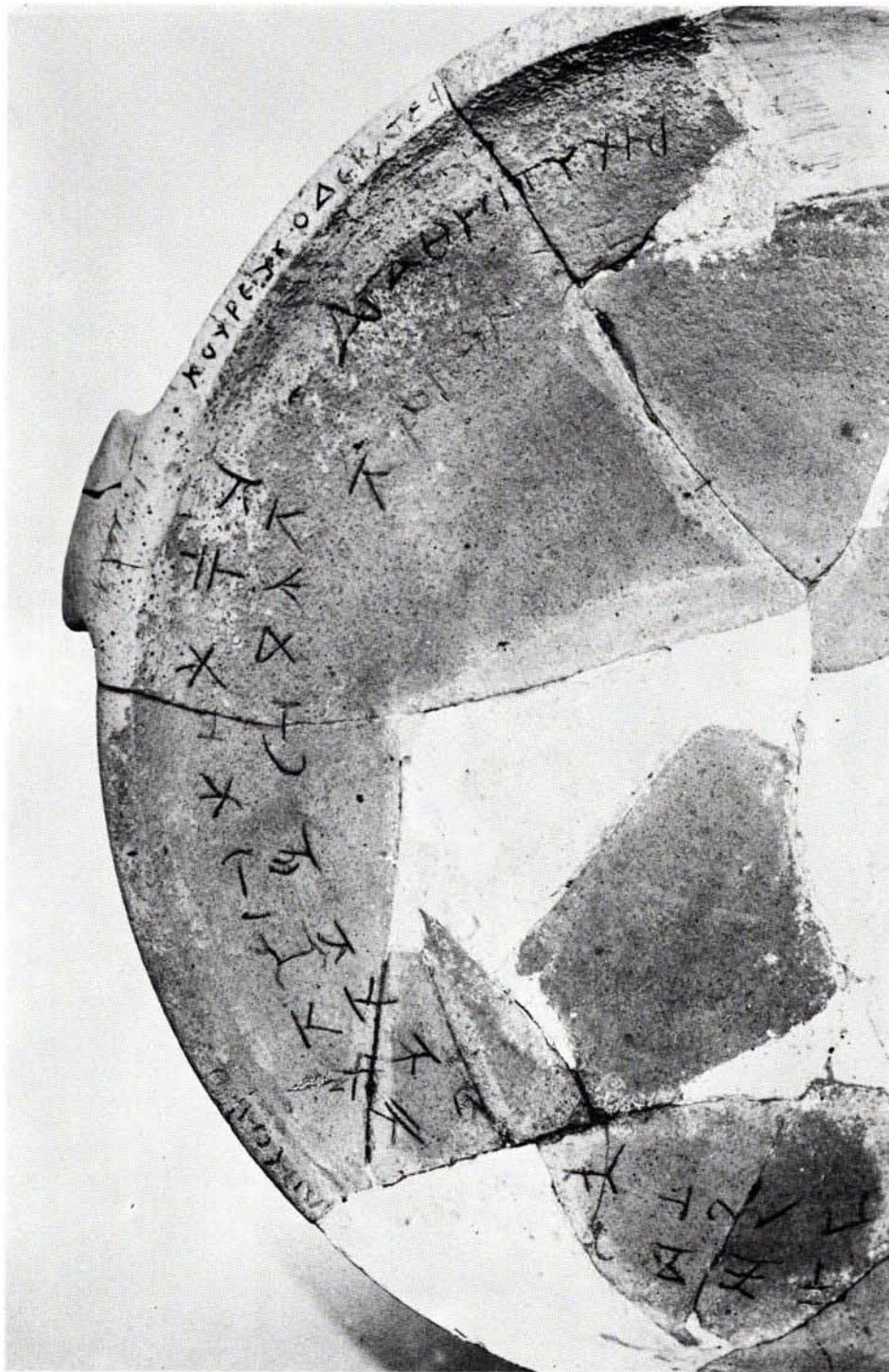


Plate IV Inscription No. 117 on frying pan (K. 16).



Plate V Inscription No. 138(b) on shallow *lekane* (K. 28).



Plate VI Inscription No. 248 on jug with twin juglets (K. 53).

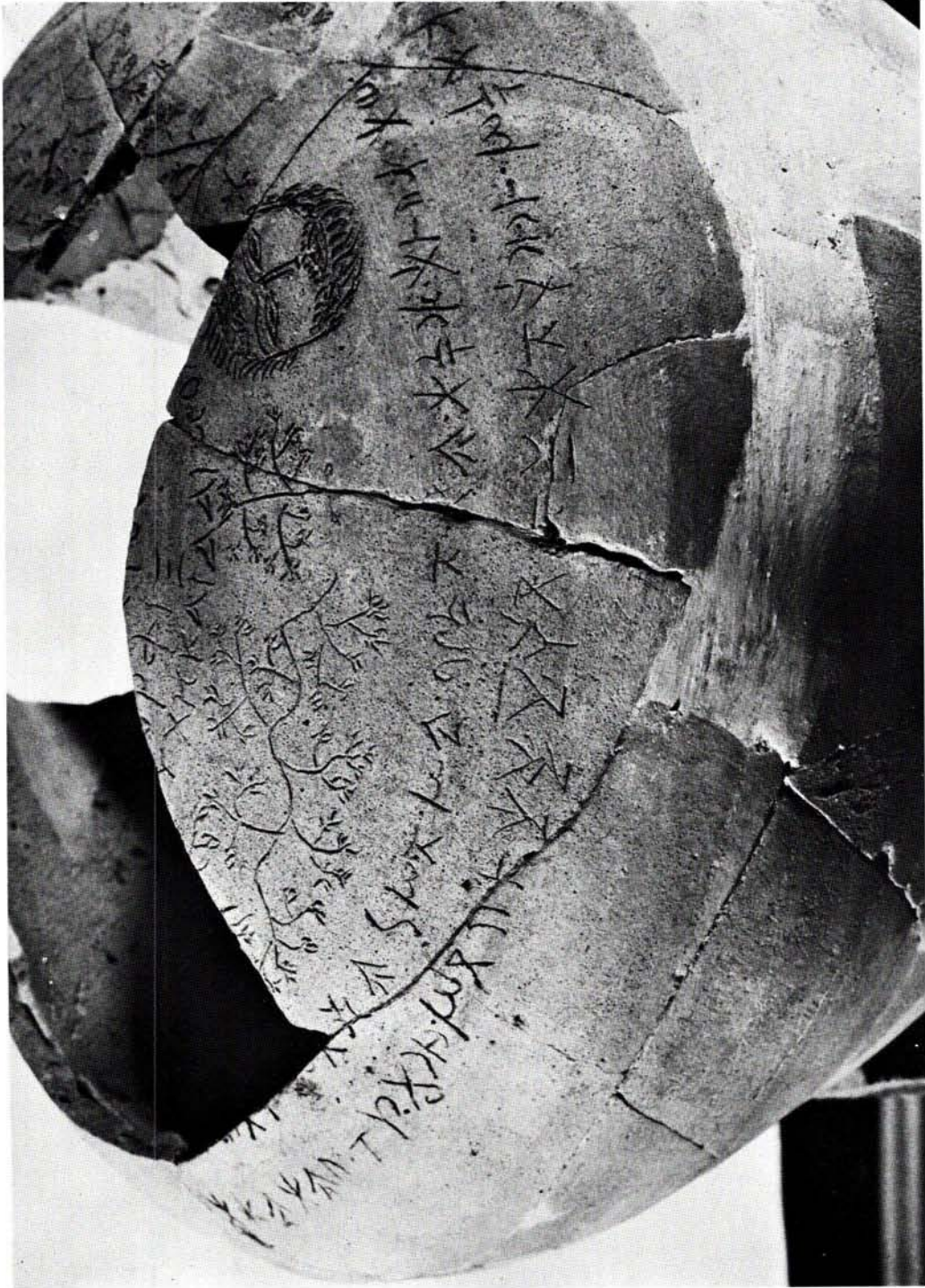


Plate VII Inscription No. 266 on pitcher (K. 20).



Plate VIII Inscription No. 302 on incense-burner (K. 32).

PART ONE  
PROLEGOMENA



## Discovery of the Site

Mrs E. Dohan and Professor R. G. Kent published in *AJA* xxx 1926, 249-258 an inscribed bowl (our **138**) and 28 inscribed sherds,<sup>1</sup> acquired "some years before" and said to be from a sanctuary in the neighbourhood of *Tremithousa*. In February, 1932 the Cyprus Museum was presented by a Capt. Timins, then resident in Nicosia, with five interesting fragments,<sup>2</sup> clearly of the same context; but, when I questioned him in 1938, Capt. Timins could throw no light whatever on their origin. However, in the following year the late George Anastasiou, then Senior Attendant to the Cyprus Museum, was generously advised by a Mr Michael H. Kattis of *Athienou*, a retired *τραπεζίτης* of some notoriety, to investigate the hill *Kafizin*, some four miles to the south-east of Nicosia. The slopes of this hill were found to be littered with these sherds, inscribed and uninscribed; and in the course of two days' digging conducted by the Museum in August, 1939 no less than 134 inscribed sherds were collected. This figure was augmented by surface finds, made in particular after rains, during the subsequent ten years. In the summer of 1948 I gave to the material assembled in Nicosia some three weeks of study, of which the outcome was the formal excavation of *Kafizin* in June and July, 1949 by Porphyrios Dikaïos, Curator of the Cyprus

Museum, and myself. Two brief reports of these activities have since appeared: in *RDAC* 1937-1939, 1951 p. 124 ff. Dikaïos had something to say of the Museum's initial soundings of 1939, and in *CQ* xlv 1950, pp. 97-106 I discussed in some detail the inscriptions as I understood them then; and in so doing I corrected the chronology of Mrs Dohan and Professor Kent: *Kafizin* belongs, not to the Cyprus of Cicero, but to that of Euergetes and Philopator.

These reports elicited from Professor Friis Johansen in *DAKM* iv 1953, 1-29 the information that the National Museum of Kopenhagen had purchased in 1924 an *amphora* (our **283**) and nine valuable sherds, all inscribed.<sup>3</sup> This would suggest a like date for the Philadelphia acquisition—the more so since it tallies with information which Mr Kattis was good enough to give me in 1949. With three partners, by then retired or defunct, he commenced, he told me, his nocturnal researches at *Kafizin* between 1916 and 1918, to pursue these at irregular intervals throughout the twenty years which followed. His finds he disposed of locally to tourists, with the exception of some pieces smuggled from Cyprus shortly after the first world war by a *Lefkara* lace merchant, by then long dead. And by him, I have no doubt, both Philadelphia and Kopenhagen were served.

<sup>1</sup> The 28 sherds published in *AJA* are the following:

### *Alphabetic*

<i>AJA</i> p. 250 no. 1 (M.5687 no. 1).....	125
<i>AJA</i> p. 250 no. 2 (M.5687 no. 2).....	162
<i>AJA</i> p. 250 no. 3 (M.5687 no. 3).....	99
<i>AJA</i> p. 250 no. 4 (M.5687 no. 4).....	162
<i>AJA</i> p. 250 no. 5 (M.5687 no. 5).....	162
<i>AJA</i> p. 250 no. 6 (M.5687 no. 6).....	97
<i>AJA</i> p. 250 no. 7 (M.5687 no. 7).....	144
<i>AJA</i> p. 250 no. 8 (M.5687 no. 8).....	285
<i>AJA</i> p. 250 no. 9 (M.5687 no. 9).....	196
<i>AJA</i> p. 250 no. 10 (M.5687 no. 10).....	66
<i>AJA</i> p. 250 no. 11 (M.5687 no. 11).....	242
<i>AJA</i> p. 250 no. 12 (M.5687 no. 12).....	143
<i>AJA</i> p. 250 no. 13 (M.5687 no. 13).....	16
<i>AJA</i> p. 250 no. 14 (M.5687 no. 14).....	96
<i>AJA</i> p. 252 no. 15 (M.5687 no. 15).....	147
<i>AJA</i> p. 252 no. 16 (M.5687 no. 16).....	78
<i>AJA</i> p. 252 no. 17 (M.5687 no. 17).....	251
<i>AJA</i> p. 252 no. 18 (M.5687 no. 18).....	128
<i>AJA</i> p. 252 no. 19 (M.5687 no. 19).....	139

### *Syllabic*

<i>AJA</i> p. 257 no. 1 (M.5686 no. 1).....	113
---	-----

<i>AJA</i> p. 257 no. 2 (M.5687 no. 2).....	174
<i>AJA</i> p. 257 no. 3 (M.5686 no. 3).....	175
<i>AJA</i> p. 257 no. 4 (M.5686 no. 4).....	175
<i>AJA</i> p. 258 no. 5 (M.5686 no. 5).....	143
<i>AJA</i> p. 258 no. 6 (M.5686 no. 6).....	101
<i>AJA</i> p. 258 no. 7 (M.5686 no. 7).....	136
<i>AJA</i> p. 258 no. 8 (M.5686 no. 8).....	201
<i>AJA</i> p. 258 no. 9 (M.5686 no. 9).....	303

<sup>2</sup> Capt. Timins' sherds:

R 38.....	249
R 39.....	264
R 40.....	266
R 41.....	247
R 42.....	125

<sup>3</sup> The Kopenhagen sherds:

<i>DAKM</i> iv 1953, 7, no. 2 (Inv. 8365).....	269
<i>DAKM</i> iv 1953, 10, no. 3 (Inv. 8364).....	266
<i>DAKM</i> iv 1953, 14, no. 4 (Inv. 8366).....	107
<i>DAKM</i> iv 1953, 16, no. 5 (Inv. 8372).....	91
<i>DAKM</i> iv 1953, 16, nos. 6-8 (Inv. 8367-9).....	122
<i>DAKM</i> iv 1953, 18, no. 9 (Inv. 8370).....	123
<i>DAKM</i> iv 1953, 18, no. 10 (Inv. 8371).....	121

## Excavation and Description

In July, 1971 I met Porphyrios Dikaios in Heidelberg, and our original agreement was then confirmed—that he should prepare a brief report on the archaeology of the site which we had jointly excavated twenty-three years earlier. On the 23rd of August Dikaios died. Repeated enquiry at the Department of Antiquities in Nicosia has elicited nothing beyond an assurance that the Cyprus Museum holds no papers of Dikaios of any kind. I accordingly visited in July, 1974 the *Medelhavsmuseet* in Stockholm, to which Dikaios' Heidelberg *Nachlass* had been bequeathed—only to find that the seven cases of his papers were concerned exclusively with *Enkomi*. Nor does the ill fortune of *Kafizin* end at this; for in the present condition of Cyprus, with *Kafizin* virtually in the front line, my attempts to secure a fresh survey of the site have been totally abortive. I can only repeat what has already been said.<sup>1</sup>

Under the hard cap of this pyramidal hill (Frontispiece and Pl. I) natural caverns have been formed by the erosion of the softer *strata*. One of these was fashioned in antiquity into a grotto for the worship of the peculiar *genius* of this striking geological phenomenon. It faces west, and in or below it was found the vast

bulk of these sherds. Its floor was extended by means of a retaining wall; where it was open to the sky post-holes indicated that it was roofed, doubtless with a thatch of branches. To its front we may suppose that a rustic altar stood; but of this now no trace remains. Within, around the cave itself, there ran a low, rock-cut shelf for the reception of offerings. At the same level a small natural terrace extended to the south-west; and near the extremity of this a bottle-shaped cistern was excavated, carefully plastered, some ten feet in depth—clearly to collect rains from the terrace itself and the cap of hard rock above it for the service of the Nymph (Pl. II).

On the eastern side of the summit of *Kafizin*, facing towards *Aronas* and the Larnaca road, two further caverns were cleared by us: one to the north-east, small and shallow, with however some few sherds, doubtless intrusive; the other, to the south-east, large, deep and, save for a few scattered finds at its entrance, almost totally devoid of any traces of antiquity.<sup>2</sup> What the relation, if any, of this last may have been to the Nymph's grotto is not clear: a larger and more imposing cave, dangerous, however, through continuous rock-falls.

## Subsequent Investigation

During the ten years which followed 1949 additions continued to be made to the inscribed sherds. Annually from 1950 to 1955 inclusive further sections of the slope on the more remote sides of the hill were stripped to the rock-face in the course of a week or ten days' continuous work by parties of labourers under

the direction of a member of the Museum's staff. Until the winter of 1959 repeated scrutiny of the surface, more particularly after winter rain, continued to be productive. Since then, however, nothing further has been recorded.

<sup>1</sup> *RDAC* 1937-1939, 1951, p. 124 ff.; *CQ* xliv 1950, 97 ff. *Cf.* also O. Masson *ICS* 252 f.

<sup>2</sup> The sherd RR 2386 no. 3, included in **193**, is reported to be "from the

interior of the cave on the SE face of the summit". This find is subsequent to our excavation of this cave, and the circumstances of its finding are unknown.

## Documentation

The documentation of *Kafizin* is both confused and confusing. In general, an identification was inked on to each individual inscribed sherd—but no single method was employed throughout. I emphasize the following points.

(1) Capt. Timins' donations of 1932 carry the labels R=R(egister) 38-42.

(2) The finds of August, 1939, the product of two days' probing, have no registration number; but in its place the single date of entry into the Cyprus Museum—namely, 1939/viii—18—followed by a serial number. The find-spot is added for approximately a quarter of these finds: this, almost invariably, was T=T(rial) 1; but once T.2 is named, once T.3 and once again T.4. Where these "trials" may have been is now quite uncertain; but it may safely be conjectured that T.1 represents work either in or in the immediate vicinity of the Nymph's cave. But T.1 of 1939 is not necessarily included in the T.1 of 1949.

(3) Surface finds of the subsequent ten years carry the letters RR=R(eceipt) R(egister), followed by a numeral lower than 2256.

(4) The finds of the excavations of 1949 were apportioned capriciously to RR 2256 and 2257, each accompanied by a serial number. Date and find-spot are often added. These dates, with the exception of preliminary soundings of the 6th and 7th of June, run consecutively from (Monday) June 20th to

(Saturday) July 8th, the finds of the day being registered on the day following their entry into the Cyprus Museum. Of the recorded find-spots, T(rench) 1 to T(rench) 7, the most productive by far was T.2, a broad trench running from the Nymph's cave to the foot of the hill; but T.3, below the cistern, and T.5, the cistern itself, were (with much of 266) also rewarding. Where the remaining finds were made is not recorded.

(5) The finds of the annual supplementary excavations of 1950-1955 were in general recorded, and carry a R(eceipt) R(egister) number in excess of 2257. Find-spots are, however, no longer stated; and the precise date of acquisition must be ascertained from the Museum registers.

(6) Surface finds made between 1948 and 1959 (above, p. 4) are, with rare exceptions (*cf.* 228 n. 1), undocumented. Bags of sherds, inscribed and uninscribed alike, were deposited in the Museum "from *Kafizin*".

This erratic and complicated documentation is further impaired by the loss of sundry labels through friction or fading; but more particularly the reconstruction of jugs, *amphorae* and *candelabra* has rendered many labels no longer legible. Nevertheless, I bear in mind the need for further research on *Kafizin*; and in the hope that this need will some day be met, I find it incumbent on me to give what information I can, although the significance of it may not now be apparent.

## Method of Presentation

Annually from 1950 to 1955 I gave from two to three weeks to the material of *Kafizin* in Nicosia. As individual pots or utensils were identified, their fragments were assembled and, as far as possible, restored. When no further addition could be made to it, each was given a *K(afizin)* number—if inscribed, running from 1 to 309; if uninscribed, from 501 upwards. These were then drawn in profile and photographed, wherever a profile was possible or a photograph called for. Since complete photographic coverage was judged too expensive to be justified, all inscriptions were traced and all inscribed pieces drawn in facsimile by myself. The 309 texts which follow, now arranged and numbered typologically, are each furnished with this facsimile and, where this was possible, with profile also; while the inscription has been further checked against the tracing. My photographs are, therefore, in effect supplementary—they confirm and they illustrate. The ceramic profiles of uninscribed objects are, however, grouped separately on pages 246-248, and are referred to at appropriate places in the text of Part Two.

The sixty-five syllabic inscriptions present further complication. I have emphasized elsewhere<sup>1</sup> that the interpretation of many signs is dangerously dependent on the direction and intensity of light; and I have accordingly furnished these syllabic inscriptions with an elaborate *apparatus*. The drawing, which they have in common with the alphabetic, is followed by a syllabic restoration with numbered signs—these being the sign-forms used by the individual inscriptions, supplemented, where necessary, from a conventional late Classical signary. This restoration is accompanied by its evaluation, which leads in turn to the Greek text. To those who may complain that all this is unduly cumbersome, I reply that in almost every case I am giving an *editio princeps*, in which such care is justified. I am also aware that many of my restorations, both in syllabic and in alphabetic texts, being often in their spelling conjectural, will be regarded by many as unscholarly. I offer what I believe to be the purport of each inscription, and in so doing I expose myself to the dangers inherent in any attempt at the restoration of inevitably hasty, sometimes careless and perhaps even illiterate writings.

<sup>1</sup> *Cf.* my comment in *Inscr. Kourion*, p. 2.



PART TWO  
THE CERAMIC MATERIAL AND INSCRIPTIONS

