

# ENGLISH SILVER COINAGE

— since 1649 —



6<sup>th</sup> Fully Revised Edition

By

Maurice Bull

SPINK

ENGLISH SILVER COINAGE  
from 1649



ENGLISH  
SILVER COINAGE  
from 1649

BY  
MAURICE BULL

Based on the original work by  
P. ALAN RAYNER

**SPINK**  
LONDON

English Silver Coinage 1649-1949 by H. A. Seaby  
First Edition 1949  
English Silver Coinage from 1649 by P. A. Rayner  
Second edition 1957  
Third (Revised) Edition 1968  
Fourth (Revised) Edition 1974  
English Silver Coinage from 1649  
Fifth (Revised) Edition by P. A. Rayner 1992  
Sixth (Revised) Edition by Maurice Bull 2015

The contents of this catalogue, including the numbering system  
and illustrations are protected by copyright.

All rights reserved. No part of this publication may be reproduced, stored in a retrieval system  
or transmitted in any form or by any means, electronic, mechanical, photocopying, recording or  
otherwise, without the prior written permission of Spink & Son Ltd.

Printed by Gutenberg Press Ltd., Tarxien, Malta

ISBN 978-1-907427-50-3

© 2015  
Spink & Son Ltd.  
69 Southampton Row  
London WC1B 4ET

[www.spink.com](http://www.spink.com)

# CONTENTS

	ESC	Page
	<b>Introduction</b>	<b>v-viii</b>
	<b>Preface</b>	<b>ix</b>
	<b>Acknowledgements</b>	<b>x-xi</b>
	<b>History of the Milled Coinage</b>	<b>xii-xiv</b>
<hr/>		
<b>Commonwealth 1649-60</b>	<b>Introduction</b>	<b>1</b>
	<b>Crowns</b>	<b>1-14</b>
	<b>Halfcrowns</b>	<b>15-68</b>
	<b>Shillings</b>	<b>69-176</b>
	<b>Sixpences</b>	<b>177-223</b>
	<b>Maundy types</b>	<b>224-230</b>
<hr/>		
<b>Cromwell 1656-58</b>	<b>Introduction</b>	<b>26</b>
	<b>Crowns</b>	<b>240-250</b>
	<b>Halfcrowns</b>	<b>251-253</b>
	<b>Shillings</b>	<b>254-259</b>
	<b>Sixpences</b>	<b>260-264</b>
<hr/>		
<b>Charles II 1660-85</b>	<b>Introduction</b>	<b>34-35</b>
	<b>1<sup>st</sup> Hammered issue</b>	<b>270-284</b>
	<b>2<sup>nd</sup> -----</b>	<b>385-296</b>
	<b>3<sup>rd</sup> -----</b>	<b>297-338</b>
	<b>Crowns</b>	<b>339-437</b>
	<b>Halfcrowns</b>	<b>438-499</b>
	<b>Shillings</b>	<b>500-565</b>
	<b>Sixpences</b>	<b>566-581</b>
<b>Maundy types</b>	<b>582-738</b>	
<hr/>		
<b>James II 1685-88</b>	<b>Crowns</b>	<b>740-747</b>
	<b>Halfcrowns</b>	<b>748-759</b>
	<b>Shillings</b>	<b>760-772</b>
	<b>Sixpences</b>	<b>773-780</b>
	<b>Maundy types</b>	<b>781-816</b>
<hr/>		
<b>William &amp; Mary 1688-94</b>	<b>Introduction</b>	<b>105</b>
	<b>Crowns</b>	<b>820-825</b>
	<b>Halfcrowns</b>	<b>826-862</b>
	<b>Shillings &amp; Sixpences</b>	<b>863-871</b>
	<b>Maundy types</b>	<b>872-986</b>

## CONTENTS

	ESC	Page
<b>William III</b> 1694-1702	<b>Introduction</b>	<b>129-133</b>
	<b>Crowns</b>	<b>990-1013</b>
	<b>Halfcrowns</b>	<b>1014-1102</b>
	<b>Shillings</b>	<b>1103-1200</b>
	<b>Sixpences</b>	<b>1201-1304</b>
	<b>Maundy types</b>	<b>1305-1335</b>
<b>Anne</b> 1702-14	<b>Introduction</b>	<b>178-179</b>
	<b>Crowns</b>	<b>1340-1356</b>
	<b>Halfcrowns</b>	<b>1357-1384</b>
	<b>Shillings</b>	<b>1385-1445</b>
	<b>Sixpences</b>	<b>1446-1472</b>
	<b>Maundy types</b>	<b>1473-1533</b>
<b>George I</b> 1714-27	<b>Introduction</b>	<b>217</b>
	<b>Crowns</b>	<b>1540-1548</b>
	<b>Halfcrowns</b>	<b>1549-1559</b>
	<b>Shillings</b>	<b>1560-1608</b>
	<b>Sixpences</b>	<b>1609-1616</b>
	<b>Maundy types</b>	<b>1617-1649</b>
<b>George II</b> 1727-60	<b>Introduction</b>	<b>235</b>
	<b>Crowns</b>	<b>1660-1672</b>
	<b>Halfcrowns</b>	<b>1673-1693</b>
	<b>Shillings</b>	<b>1694-1735</b>
	<b>Sixpences</b>	<b>1736-1764</b>
	<b>Maundy types</b>	<b>1765-1843</b>
<b>George III</b> 1760-1820	<b>Introduction</b>	<b>259-261</b>
	<b>Countermarked Dollars</b>	<b>1850-1903</b>
	<b>1798 Patterns</b>	<b>1904-1924</b>
	<b>Bank of England Dollars</b>	<b>1925-2004</b>
	<b>Crowns</b>	<b>2005-2019</b>
	<b>Pattern Crowns</b>	<b>2020-2060</b>
	<b>Three Shillings Bank Tokens</b>	<b>2061-2085</b>
	<b>Halfcrowns</b>	<b>2086-2111</b>
	<b>1s-6d Bank Tokens</b>	<b>2112-2123</b>
	<b>Shillings</b>	<b>2124-2182</b>
		<b>307-314</b>

*(continued)*

## CONTENTS

	ESC	Page	
<b>George III</b> 1760-1820	<b>Nine pence Bank Tokens</b>	<b>2183-2185</b>	<b>315</b>
	<b>Sixpences</b>	<b>2186-2228</b>	<b>316-321</b>
	<b>Maundy types</b>	<b>2229-2299</b>	<b>322-329</b>
<b>George IV</b> 1820-30	<b>Crowns</b>	<b>2310-2321</b>	<b>330-331</b>
	<b>Pattern Crowns</b>	<b>2322-2355</b>	<b>332-339</b>
	<b>Halfcrowns</b>	<b>2356-2393</b>	<b>340-345</b>
	<b>Shillings</b>	<b>2394-2419</b>	<b>346-349</b>
	<b>Sixpences</b>	<b>2420-2443</b>	<b>350-352</b>
	<b>Maundy types</b>	<b>2444-2456</b>	<b>353</b>
<b>William IV</b> 1830-37	<b>Crowns</b>	<b>2460-2471</b>	<b>354-357</b>
	<b>Halfcrowns</b>	<b>2472-2486</b>	<b>358</b>
	<b>Shillings</b>	<b>2487-2498</b>	<b>359</b>
	<b>Sixpences</b>	<b>2499-2514</b>	<b>360-361</b>
	<b>Maundy types</b>	<b>2515-2555</b>	<b>362-366</b>
<b>Victoria</b> 1837-1901	<b>Introduction</b>		<b>367-368</b>
	<b>Crowns</b>	<b>2560-2609</b>	<b>369-375</b>
	<b>Pattern Crowns</b>	<b>2610-2694</b>	<b>376-391</b>
	<b>Double Florins</b>	<b>2695-2705</b>	<b>392-394</b>
	<b>Halfcrowns</b>	<b>2706-2814</b>	<b>395-406</b>
	<b>Florins</b>	<b>2815-2972</b>	<b>407-427</b>
	<b>Shillings</b>	<b>2973-3167</b>	<b>428-452</b>
	<b>Sixpences</b>	<b>3168-3294</b>	<b>453-460</b>
	<b>Pattern Sixpences</b>	<b>3295-3316</b>	<b>461-465</b>
	<b>Groats</b>	<b>3317-3360</b>	<b>466-467</b>
	<b>Threepences</b>	<b>3361-3455</b>	<b>468-472</b>
	<b>Twopences Threehalfpences</b>	<b>3456-3477</b>	<b>473-474</b>
	<b>Maundy</b>	<b>3478-3559</b>	<b>475-478</b>
<b>Edward VII</b> 1901-10	<b>Crowns</b>	<b>3560-3566</b>	<b>479-480</b>
	<b>Halfcrowns</b>	<b>3567-3576</b>	<b>481</b>
	<b>Florins</b>	<b>3577-3586</b>	<b>482</b>
	<b>Shillings</b>	<b>3587-3596</b>	<b>483</b>
	<b>Sixpences</b>	<b>3597-3606</b>	<b>484</b>
	<b>Maundy</b>	<b>3607-3626</b>	<b>485-486</b>

## CONTENTS

	ESC	Page
<b>George V</b> 1910-36	<b>Introduction</b>	<b>487-488</b>
	<b>Crowns</b>	<b>3630-3676</b>
	<b>Double Florins</b>	<b>3677-3708</b>
	<b>Halfcrowns</b>	<b>3709-3754</b>
	<b>Florins</b>	<b>3755-3798</b>
	<b>Shillings</b>	<b>3799-3858</b>
	<b>Octorinos</b>	<b>3859-3870</b>
	<b>Sixpences</b>	<b>3871-3925</b>
	<b>Threepences</b>	<b>3926-3969</b>
	<b>Maundy</b>	<b>3970-3997</b>
<b>Edward VIII</b> Jan. -Dec. 36	<b>Introduction</b>	<b>521</b>
	<b>Denominations (all)</b>	<b>4000-4015</b>
<b>George VI</b> 1936-52	<b>Introduction</b>	<b>526</b>
	<b>Crowns</b>	<b>4020-4031</b>
	<b>Double Florins</b>	<b>4032-4033</b>
	<b>Halfcrowns</b>	<b>4034-4075</b>
	<b>Florins</b>	<b>4076-4119</b>
	<b>Shillings</b>	<b>4120-4217</b>
	<b>Sixpences</b>	<b>4218-4274</b>
	<b>Threepences</b>	<b>4275-4303</b>
<b>Elizabeth II</b> 1952-	<b>Introduction</b>	<b>552-553</b>
	<b>Crowns</b>	<b>4330-4348</b>
	<b>Halfcrowns</b>	<b>4349-4392</b>
	<b>Florins</b>	<b>4393-4441</b>
	<b>Shillings</b>	<b>4442-4520</b>
	<b>Sixpences</b>	<b>4521-4558</b>
	<b>Maundy</b>	<b>4559-4580</b>
	<b>Proposed decimal coinage</b>	<b>572-578</b>
	<b>Unofficial Repro. Patterns</b>	<b>579-582</b>
	<b>Provenances</b>	<b>583-647</b>
<b>Mintage figures</b>	<b>648-654</b>	
<b>Bibliography</b>	<b>655-656</b>	
<b>Proof sets and individuals</b>	<b>657-662</b>	

## PREFACE TO THE SIXTH EDITION

This completely revised edition of *The English Silver Coinage* came about as a result of a talk with Philip Skingley (Spink Numismatic Publications), when he asked if I would consider a long overdue update of the work by Alan Rayner. The last update was in 1992 when letter suffixes were used to record new additions. He suggested I re-number everything in order to remove the confusing letter suffixes. After a few unsuccessful attempts with new formats etc., this is the result.

In his fifth Edition Alan Rayner was undecided whether to re-number, in order to eliminate the use of letter suffixes, and to change the format by monarch rather than denomination. After consultation with other collectors I have decided to make those changes and to cross-reference each with the old ESC numbers.

Another major decision was what to include that had not been recorded before. After consultation with numerous collectors and knowledgeable persons I decided that this work should be a reference of ALL known silver coins both available and unavailable to collectors, i.e. a record of proofs and patterns of the greatest rarity. Thanks to the computer, the opportunity to profusely illustrate specimens and enlargements of die varieties has been possible. Unfortunately, some varieties, especially on smaller coins, are not photogenic taken from publications. I decided to list, as many as possible, every recorded coin at the back of the book under 'Provenances' to show where an illustration is available. This has the added benefit of proving the existence of many rare examples. A small number have not been located either because of rarity, or being too common to have been illustrated in publications.

Prior to 1816, when the reducing machine was introduced and dies were copied from a master die, they were individually made by hand, and no two dies were truly identical. This is not intended to be a finite record, but simply to show the major, and, some minor recognised varieties. Some, so-called, varieties have been delisted where they are considered to be the result of striking, damaged or filled dies and not true die-sinker's errors, i.e. missing stops, un-barred letters and edge inscriptions caused by slippage of the collar segments.

When re-numbering this series I decided to leave appropriate gaps in the sequence between reigns for a number of reasons; firstly to enable late additions to be incorporated easily and secondly to help future additions to be made in the next edition, if necessary, without the need to re-number the whole series again.

Maurice Bull  
2013

## ACKNOWLEDGEMENTS

The first edition of *English Silver Coinage 1649-1949* was published by H.A. Seaby in 1949. P.A. Rayner published a Second Edition in 1957, a Third in 1968, a Fourth in 1974 and the Fifth (Revised) in 1992 (over two decades ago).

Finally I must confess this sixth Edition (revised and updated in a new format) would not have been possible without the knowledge and dedicated work of Alan Rayner, to whom I am deeply grateful, and for the input by a number of collectors in their specialised fields.

My most sincere thanks are to Philip Skingley (Spink Numismatic Publications) for giving me the opportunity to tackle such an important task, and for backing the project from start to finish together with immense encouragement and assistance along the tortuous way.

I must give a very special thanks to Steve Hill for privately taking the time to proof read and correct my many mistakes and for his valuable suggestions to improve the text and imagery.

I wish to thank the following people for their contributions, suggestions, and permission to copy illustrations and notes from their various publications and collections, for without their generosity this publication would not have been possible, and my apologies to anyone I may have missed;

Andrew Wide (private collector)

Chris Webb, Director at D.N.W Auctions

Dave Tisbury (private collector)

Douglas Saville (Rare book seller),

Ian Hunter (private collector)

Lloyd Bennett (Coin dealer),

Leon Juckett (private collector)

Malcolm Lewendon (private collector)

Mark Rasmussen (Coin dealer)

Marvin Lessen (private collector)

Mike Shaw (private collector)

Nick Haddad (private collector)

Nigel Prevost (private collector)

Paul Cattermole (private collector)

Roderick Farey (private collector)

Roderick Richardson (Coin dealer)

Seth Freeman & Steve Hill at Baldwin's, and last, but not least, thank you to all my friends with whom I bounced many new ideas; Alan Hawkins, Barry Allen, Mick Martin, Mark Rasmussen, Ray Bayford etc..

## ACKNOWLEDGEMENTS

I am especially indebted to the following people for supplying wonderful images and helping me to unravel many complicated series; Roderick Farey and Nigel Prevost (shillings), Malcolm Lewendon (Gothic Florins etc.), David Tisbury (Commonwealth varieties), and to the anonymous collectors who allowed me to see their private collections.

Finally I am very grateful to all the famous named numismatists of the past whose collections were illustrated in the many auction and sales catalogues: Spink, D.N.W, Glendining, Seaby, St. James's, Bonham's etc., through which they were sold over the years (in no particular order); Hyman Montagu, Paul W. Karon, R.C. Lockett, Herman Selig, Colonel Morrieson, Lord Hamilton, H.M. Lingford, Jackson-Kent, E.D.J. Van Roekel, The Slaney collection, Dr Bruno Mantegazza, Frederick Willis, Dr D. Rees-Jones, J.C.S. Rashleigh, La Riviere and Kaufman, The Magnus collection, R. Henry Norweb, T.H. Paget, Alfred Bole, H.A. Parsons, H.E. Manville, G. Sommerville,, J.F. Rowlands, Martin Hughes, A.H. Whetmore Alan Barr and the publication by Alex Wilson & Mark Rasmussen '*Trials and proofs in gold*'. (See under 'Provenances')

A special thanks to the auction houses, dealers and collectors who graciously waived copyright for me to use some of their images when actual specimens were unavailable, and to Nigel Prevost, John Howie and Roderick Farey for allowing me to reprint their published die studies of Anne Shillings.

Maurice Bull  
2015

# HISTORY OF MILLED COINAGE

(Reproduced from E.S.C. Fifth Edition by P. Alan Rayner)

## ELIZABETH I

### First use of the mill and screw press in England

It is usual to refer to all coins struck by machinery as 'milled' but this is a misnomer. The term 'mill money' was originally applied to coins made at the Paris Mint about 1552, when the metal was rolled to the required thickness, a cutting press stamped out the blanks, and a screw press was used to strike the coins. The power for these operations was supplied by horse or water (mill).

Despite the coins being technically and artistically superior to those made by hand, years of bitter opposition from mint workers who feared for their jobs finally drove the machine's inventor, Eloye Mestrele, to seek employment at the Tower Mint in London in 1561. There he was allowed to set up and demonstrate his machinery, being paid the rather miserly salary of twenty-five pounds per annum. During the period from 1561 to 1572 he struck the following denominations. In gold: half-pound, crown, and halfcrown; and in silver: shilling, sixpence, fourpence, threepence, twopence and three-farthings.



Mestrelle's shilling

The gold coins are extremely rare and it is doubtful if they circulated in any quantity. The silver shillings were struck only in small numbers, but the sixpences, struck nearly every year between 1561 and 1571, are relatively common and display such numerous variations in the style of portraiture, mint-mark and diameter that a considerable number of dies is indicated. The fourpence, threepence and halfgroat are considerably scarcer than the sixpences and only a very few specimens of the three-farthings are known. In all, a very considerable number of coins must have been struck. Also known are several superb patterns in gold and silver from dies engraved by Derick Anthiony.

## HISTORY OF MILLED COINAGE

Despite the obvious superiority of his coins, Mestrelle fell foul of strenuous opposition to his machinery and in 1572 was deprived of his emoluments, probably because he was related to a certain Philip Mestrelle who was hanged at Tyburn in 1569 for forgery. An attempt to restore his position resulted in completely false accusations as to the speed and quality of striking being made by the Warden of the Mint, Richard Martin. Mestrelle was discharged and six years later he was hanged at Norwich together with several accomplices for striking and passing false money.

### CHARLES I

#### Further experiments with mill machinery by Nicholas Briot

It is to Charles' fine artistic taste and his intense desire to improve the poor quality of portraiture and striking of coins that we owe the employment in London of Nicholas Briot, one of the most brilliant artists and die cutters of his time. Like Mestrelle, he was of French origin, having spent some years working at the Paris Mint amid continuous hostility towards the mill and screw machinery, of which he was a staunch advocate. In 1628 he was allowed to set up machinery in the Tower Mint, and at once began to make a number of superb pattern pieces of an artistic and technical standard not previously achieved.

Apart from his outstanding qualities as an artist, his refinement over the machinery used by Mestrelle consisted of a circular collar which prevented the blank from spreading unevenly when struck, thus producing coins of a neater and rounder appearance bearing a fuller impression of the dies than had hitherto been possible. Portraiture on the hammered coins improved under his influence, although coins were still struck in a disgracefully shoddy fashion.



N. Briot's  
1<sup>st</sup> milled  
Crown  
(D.J. Van Roekel 42)



## HISTORY OF MILLED COINAGE

Briot's first milled issue consisted in gold of an angel, unite, double crown and crown, and in silver of a crown (see illustration above), halfcrown, shilling, sixpence, halfgroat and penny. These were struck between July 1631 and July 1632, some coins having in addition to the mintmark B, a flower or rose, the mark in use on the hammered coins at this time.

In August 1635 he was appointed Master of the Scottish Mint, and although he held this post until 1646, when he was succeeded by his son-in-law John Falconer, most of the coins for which the Scottish series is justly proud were struck in 1637. Doubtless under his influence, the use of the mill and screw press in Scotland pre-dates the general use of this machinery in London by several years. Briot's second milled issue in London, struck in 1638-9 with the anchor mintmark consisted only of a silver halfcrown, shilling and sixpence, although hammered halfcrowns and shillings were also made from his dies at this time. While continuing to work at the Tower Mint for the Parliamentary forces during the Civil War, he surreptitiously made dies for the King's coins at York and Oxford. He died at Oxford in 1646.



N. Briot's  
Halfcrown  
struck at York  
c. 1643  
(Bull 557)



## COMMONWEALTH OF ENGLAND 1649-1660

In 1642, at the beginning of the Civil War, Parliament seized the Tower Mint but continued to strike coins in the name of Charles I and with his portrait. After the king's execution Parliament ordered coins to be made in the name of the Commonwealth and for the first time the inscriptions in English tongue. The types of all the denominations were uniform, except for the half-penny, and were very commonplace: the three smallest pieces bear no legend. The only variation is a change in the mintmark: until 1657 it was a sun, after that date an anchor; all pieces with this latter mintmark are rare.

The authorities having heard of the great advancements made in the manufacture of coins on the continent, sent to Paris for Peter Blondeau who had invented a new machine. He came over and in a house in the Strand erected a machine on the mill and screw principle, from which he struck the finely executed patterns of 1651. His halfcrown patterns were the first pieces made in this country with an inscription on the edge. His position at the Mint was, however, much opposed by the 'old brigade' and resulted in the issue of a series of patterns by David Ramage to show that a foreigner was not required. These pieces are of inferior workmanship to those of Blondeau. However, he held on for a time, but by 1658 the opposition was so strong that he was forced to resign leaving his machine behind. He returned to Paris with a pension of £100.

A proclamation of 7 September 1661 demonetised the *Commonwealth Coinage*, but the date was extended until 1 May 1662 for payment of taxes (Craig *The Mint*, p. 157)

The following recorded die varieties demonstrate how large the production must have been during this period. No doubt quantities of Charles I coins were melted down to augment the demand for silver.

COMMONWEALTH, 1649-60  
**CROWNS**



Standard obverse



Inverted N



Standard reverse



Blundered E A



Thin wire-line inner circle  
 Inverted N in ENGLAND



6 over 4



Very large 2 over 1



Large 6 over small over 4



6 over 4



Small 6 over 4



Both Ns over inverted Ns



A for V in VS



Normal & inverted Ns

## COMMONWEALTH, 1649-60

**CROWNS**

Standard design with value shown as • V •

*Obv.* Cross of St George on a shield between; palm branch left and laurel branch right, with the mintmark above

*Leg.* **THE COMMONWEALTH OF ENGLAND**  
*mm.* **SUN**

*Rev.* Value • V • above conjoined shields; the cross of St George left and the Irish harp right with date above in the legend

*Leg.* **GOD WITH VS**

Spink 3214

ESC	Date	Varieties, remarks, etc	R	(Old ESC)
1	<b>1649</b>	All Ns over inverted Ns	$R^d$	1
2	—	Thin wire-line inner circle, and inverted N in <b>ENGLAND</b>	$R^3$	2
3	<b>1651</b>	All Ns over inverted Ns	$R^d$	3
4	<b>1652</b>	All Ns over inverted Ns Many subtle die varieties	R	4
5	—	All Ns over inverted Ns Very large 2/1	$R^3$	5
6	<b>1653</b>	All Ns over inverted Ns Many subtle die varieties	N	6
7	—	All Ns over inverted Ns <i>Rev. A for V in VS</i>	$R^3$	6A
8	<b>1654</b>	All normal Ns	$R^3$	7
9	—	All normal Ns <i>Rev. A for V in VS</i>	$R^3$	7A
10	<b>1656</b>	Large round 6 possibly over 4 <i>Rev. A for V in VS</i> Blundered E A in <b>COMMONWEALTH</b> 2 <sup>nd</sup> N inverted in <b>ENGLAND</b>	$R^2$	8
11	—	Small 6/4 All normal Ns	$R^2$	8A
12	—	Small 6/4 All normal Ns <i>Rev. A for V in VS</i>	S	9
13	—	Small 6/4 2 <sup>nd</sup> N over inverted N in <b>ENGLAND</b> <i>Rev. A for V in VS</i>	S	9
14	—	Large 6 over small 6 over 4 <i>Rev. A for V in VS</i> 2 <sup>nd</sup> N over inverted N in <b>ENGLAND</b>	$R^3$	8A

## Note

There are many sub-varieties of these crowns; most notable in the size of the numerals, alignment of the legends and spacing of the date relative to the value etc. This is inherent in individually handmade coinage.

A challenge to make a full die study awaits someone with time and patience

COMMONWEALTH, 1649-60  
**CROWNS**

**FABRICATION**

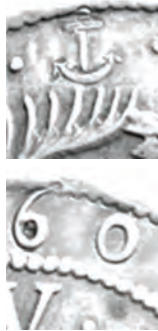
Caveat

There are many contemporary and modern forgeries of this series, including some with a copper core, e.g., 1653 (Baldwin's cabinet)

*“The re-cutting of the inscription on genuine coins (All Commonwealth denominations) to produce new or rarer readings was the particular line of the notorious 19<sup>th</sup> century forger, John White”*

Typical example

(Provenance Spink Auction 147, lot 531)



**ANCHOR**

xxx	<b>1660</b>	Tooled to alter date from <b>1652</b> to <b>1660</b> and <i>mintmark Sun</i> to <i>Anchor</i> Normal <b>N</b> in <b>COMMONWEALTH</b> Ns over inverted Ns in <b>ENGLAND</b> <i>(Unique?)</i>		
-----	-------------	---------------------------------------------------------------------------------------------------------------------------------------------------------------------------------------------------	--	--

COMMONWEALTH, 1649-60

HALFCROWNS

OBVERSES



Obverse A



All Ns over inverted Ns



Only stops by *mm*



COMMONWEALTH



2<sup>nd</sup> N over inverted N



2<sup>nd</sup> N over inverted N



No stop after THE



Extra stop in THE



E over ?



All Ns inverted



First O over M



Inverted Ns



N over G



OF F



Reverse B



Missing T

COMMONWEALTH, 1649-60  
**HALFCROWNS**

Standard reverse with value shown as  
 • II • VI •    • II VI •    II VI  
 (Pattern 1651 shows value as II • VI)



All stops



Only stops by value



Only stops by value



No central stop in value



No stops by value



1655



5 over 4



2 over 1



3 over 1



3 over 2



4 over 3



6 over 4



6 over 5



All stops



8 over 7

## COMMONWEALTH, 1649-60

## HALFCROWNS



1659

Normal 2  
Low central stopLarge 2  
Centralised middle stop

Normal N



N over inverted N



Re-entered N

A.

mm. SUN

Spink 3215

ESC	Date	Varieties, remarks, etc	R	(Old ESC)
15	<b>1649</b>	No central stop in mark of value	R <sup>3</sup>	425
16	—	All Ns inverted No central stop in mark of value		425
17	<b>1651</b>	With regular central stop in value	R <sup>2</sup>	426
18	—	2 <sup>nd</sup> N over inverted N in <b>ENGLAND</b> No central stop in mark of value	R <sup>2</sup>	425A?
19	—	Mule; 1/- <i>obv.</i> with 2/6 <i>rev.</i> on a shilling flan All Ns over inverted N. No central stop in value (This coin is duplicated under shillings) (2 known)	R <sup>7</sup>	428
20	—	No stops by value	R <sup>2</sup>	425B?
21	—	No stop between <b>GOD WITH</b>	R <sup>4</sup>	426A
22	—	No central stop in mark of value	R <sup>4</sup>	426B
23	—	<i>Proof</i> , see note <sup>1</sup>	R <sup>3</sup>	427
24	<b>1652</b>	Low central stop in value	R	429
25	—	Large figure 2 in date. Centralised stop in value	R <sup>2</sup>	429A?
26	—	2 over 1	R <sup>2</sup>	430
27	—	No stops after <b>THE OF</b> Extra stop in <b>COMMON·WEALTH</b>	R <sup>4</sup>	430A
28	<b>1653</b>		N	431
29	—	Reads ·OF·F ( <i>due to double strike?</i> )	R	
30	—	2 <sup>nd</sup> N over inverted N in <b>ENGLAND</b>	S	431A
31	—	Re-entered 2 <sup>nd</sup> N in <b>ENGLAND</b>	S	431A

COMMONWEALTH, 1649-60  
**HALFCROWNS**

32	<b>1653</b>	No stop after <b>THE</b>	S	431A
33	—	Only stops on obverse by mintmark (with all stops on reverse)	R	431C?
34	—	Only stops on obverse by mintmark Only stops on reverse by value	R	431C?
35	—	<b>5</b> over <b>4</b> All stops on obverse Only stops on reverse by value	R	431D?
36	—	Only stop in reverse legend after date	R	431B
37	—	<b>3</b> over <b>1</b>	R	432
38	—	<b>3</b> over <b>2</b>	R	433
39	—	<b>65</b> over <b>56</b> (i.e. altered from 1563)	R <sup>4</sup>	433A
40	<b>1654</b>		S	434
41	—	Only stops by mintmark	R	434A?
42	—	Only stops on reverse by value	R	434A?
43	—	<b>4</b> over <b>3</b>	R	435
44	—	Error; <b>E</b> over <b>I</b> in <b>COMMONWEALTH</b>	R <sup>2</sup>	?
45	—	Error; first <b>O</b> struck over <b>M</b> in <b>COMMONWEALTH</b>	R <sup>3</sup>	435A
46	—	Reads <b>COMMONWEALH</b> (note missing <b>T</b> )	R <sup>4</sup>	435B
47	—	Error; first <b>N</b> of <b>ENGLAND</b> over <b>G</b>	R <sup>3</sup>	?
48	<b>1655</b>		R <sup>5</sup>	436 <i>(4 known. 2 in B.M.)</i>
49	<b>1656</b>		S	437
50	—	Proof-like appearance	R <sup>6</sup>	437B
51	—	Only stops on obverse by mintmark	R <sup>4</sup>	437F
52	—	No stop after <b>THE</b>	R <sup>4</sup>	437E
53	—	Extra stop in <b>TH·E·</b>	R <sup>4</sup>	437A
54	—	<b>6</b> over <b>4</b>	R	437B?
55	—	<b>6</b> over <b>5</b>	R <sup>4</sup>	438
56	—	<b>6</b> over <b>5</b> and extra stop in <b>TH·E·</b>	R <sup>4</sup>	438A
57	<b>1657</b>		R <sup>7</sup>	438B? <i>(2 known)</i>

**B.**

*mm.* **ANCHOR**

Spink 3216

58	<b>1658</b>		R <sup>5</sup>	439
59	—	<b>8</b> over <b>7</b>	R <sup>4</sup>	440
60	<b>1659</b>		R <sup>7</sup>	441 <i>(2 known)</i>
61	<b>1660</b>		R <sup>4</sup>	442

COMMONWEALTH, 1649-60

HALFCROWNS

PATTERNS



Simon  
C & D



Flaw?



62	<b>C</b> <b>1651</b>	By <b>Simon and (Blondeau)<sup>2</sup>, 1651</b> Obverse similar to the current halfcrown, but much neater workmanship, and struck in a mill <i>Rev.</i> Value with central stop only (13 harp strings) <i>Edge</i> , <b>IN · THE · THIRD · YEARE · OF · FREEDOME · BY · GODS · BLESSING · RESTORED · 1651</b>	<i>R</i> <sup>3</sup>	443
----	-------------------------	-------------------------------------------------------------------------------------------------------------------------------------------------------------------------------------------------------------------------------------------------------------------------------------------------------------------------	-----------------------	-----

63	<b>D</b> <b>1651</b>	Similar, but with different edge reading <i>Edge</i> , <b>TRVTH : AND : PEACE : 1651</b> (olive branch) : <b>PETRVS : BLONDÆVS :</b> <b>INVENTOR : FECIT · (palm branch)</b>	<i>R</i> <sup>2</sup>	444
64	—	Similar. <i>In copper</i> , on thin flan, <i>edge</i> , plain ( <i>unique?</i> )	<i>R</i> <sup>7</sup>	444A



Simon  
E



65	<b>E</b> <b>1651</b>	By <b>Simon, 1651</b> Similar in design to the current halfcrown, but with a hair-line within a beaded border both sides, and leaves on inside of the palm branch; not machine made <sup>3</sup>	<i>R</i> <sup>7</sup>	444B
----	-------------------------	-----------------------------------------------------------------------------------------------------------------------------------------------------------------------------------------------------	-----------------------	------

COMMONWEALTH, 1649-60  
HALFCROWNS



Ramage  
F



66	<b>F</b> <b>1651</b>	By <b>Ramage, 1651</b> <i>Obv.</i> Cross of St George on a smaller shield within twin laurel branches, with berries <i>Leg.</i> ★ THE COMMONWEALTH OF ENGLAND Star at the top with lozenge stops in both legends <i>Rev.</i> Small conjoined shields with cross of St George left and Irish harp right, in front of a guardian Angel. Inner beaded circles both sides <i>Leg.</i> ★ GAVRDED WITH ANGELES 1651 <i>Edge.</i> TRVTH AND PEACE 1651 between two beaded lines (9 examples*) wt. 17.312g	R <sup>5</sup>	445
67	—	Similar. <i>Edge.</i> plain (8 examples*) Slaney 364, wt. 15.23g	R <sup>7</sup>	445B <sup>3</sup>

\*Numbers listed by Bergne (Numismatic Chronicle vol. XVII, 1855) - Slaney 364



Ramage  
G



68	<b>G</b> <b>1651</b>	By <b>Ramage (?), 1651</b> <i>Obv.</i> Similar to current coin, but of finer style Shields are more square-shape and smaller <i>Rev.</i> No mark of value. Plain edge <i>Leg.</i> GOD VVITH VS (note V V for W)	R <sup>7</sup>	445D
----	-------------------------	-----------------------------------------------------------------------------------------------------------------------------------------------------------------------------------------------------------------------------	----------------	------

COMMONWEALTH, 1649-60  
**HALFCROWNS**

Notes

- 1 This, in the British Museum, may be just an exceptionally well struck ordinary coin. Also in the B.M. is a halfcrown of this date with a milled edge; it is not as well struck as might be expected of a proof, so may be an experimental piece or have had the milling added unofficially  
  
Old ESC 434a, with double TT error viz. 1654 COMMONWEALTTH, is almost certainly due to double-striking, and removed from listing.
- 2 In order to clear up a misconception; "*Blondeau did not make dies, but hardware; Simon made dies*" (Marvin Lessen)
- 3 For old ESC 445A & 445C see under Shillings  
  
Variations in size, spacing and alignment of dates and legends are ignored unless significant. Specimens in high grades are much rarer than indicated (This applies to all denominations)  
  
*Because of the hammered coinage's hand-made nature it is prone to much variety between dies and lacks the uniformity of the milled coinage.* (Steve Hill)

COMMONWEALTH, 1649-60  
**SHILLINGS**

Standard design as crown with value shown on *rev.* as • XII • or XII

*Mm. Sun*



All stops  
 Normal Ns



All stops &  
 Ns over inverted Ns



Only stops by *mm.*  
 Ns over inverted N



No stop after THE



No stops  
 N over inverted N in  
 COMONWEALTH



Only stops by *mm.*  
 Normal Ns



All stops, extra stop in  
 COMMON·WEALTH



No stops  
 All Ns over inverted Ns



COMMONWEALTH  
 Double-striking error

COMMONWEALTH, 1649-60  
**SHILLINGS**



No stop after THE



F over D



No stop after ENGLAND



Single M



E over E



No stop after WEALTH



Extra stop in  
 COMMON·WEALTH  
 But not after N  
 nor after OF



No stops by *mm.*



ENGLND (minus A)



COMMONWEATH  
 (minus L)



Re-entered T



2<sup>nd</sup> N inverted



No stop after OF



O over M, 2<sup>nd</sup> M over O



Stop in O·F



COMMON·WEALTH



COMMONWEALTH  
 (minus T)



D over P?



No stop after OF

COMMONWEALTH, 1649-60  
SHILLINGS



Inverted N



N over inverted N



N over G



51 over 49



51 over 49



1659



Date off-set left



2 over 1



2 over 2 on its side



5 2 wide apart



4 over 3



5 over 4 over 3



8 over 7



O over M  
2<sup>nd</sup> M over O



G over L?



O·F·



M over F?



XII over IIX



T over G

COMMONWEALTH, 1649-60  
**SHILLINGS**

*Mm. Anchor*



All stops



No stops by *mm.*



No stops



No stop after THE



No stop after THE  
 and ENGLAND



Stop in  
 COMMONWEALTH  
 but not before or after OF



All stops



No stops by value



No stops



Only stops by value



No stop after date



V over O

COMMOMWEALTH, 1649-60  
**SHILLINGS**

A.	<i>mm.</i> SUN	Spink 3217		
ESC	Date	Varieties, remarks, etc	<i>R</i>	(Old ESC)
69	<b>1649</b>		<i>R</i>	982
70	—	<b>F over D in OF</b>	<i>R</i> <sup>3</sup>	982B
71	—	No stop after <b>OF</b>	<i>R</i>	982A
72	—	No stop after <b>ENGLAND</b>	<i>R</i>	982A
73	—	2 <sup>nd</sup> <b>N</b> inverted in <b>ENGLAND</b>	<i>R</i>	
74	—	1 <sup>st</sup> <b>N</b> over <b>G</b> in <b>ENGLAND</b>	<i>R</i>	982C?
75	—	All <b>Ns</b> over inverted <b>Ns</b>	<i>R</i>	
76	—	No stops after <b>THE</b> and by value	<i>R</i>	982D?
77	—	No stops after <b>OF</b> or <b>ENGLAND</b>	<i>R</i>	982B
78	—	Inverted <b>N</b> in <b>COMMONWEALTH</b>	<i>R</i> <sup>2</sup>	
79	<b>1651</b>		<i>N</i>	983
80	—	Inverted <b>N</b> in <b>COMMONWEALTH</b>	<i>R</i> <sup>2</sup>	
81	—	<b>N</b> over inverted <b>N</b> in <b>COMMONWEALTH</b>	<i>R</i> <sup>2</sup>	
82	—	1 <sup>st</sup> <b>N</b> over inverted <b>N</b> in <b>ENGLAND</b>	<i>R</i> <sup>2</sup>	
83	—	2 <sup>nd</sup> <b>N</b> over inverted <b>N</b> in <b>ENGLAND</b>	<i>R</i> <sup>2</sup>	
84	—	No stops on obverse	<i>R</i> <sup>2</sup>	
85	—	No stops on obverse. All <b>Ns</b> over inverted <b>Ns</b>	<i>R</i> <sup>2</sup>	
86	—	No stops on obverse. <b>N</b> over inverted <b>N</b> in <b>COMMONWEALTH</b>	<i>R</i> <sup>2</sup>	
87	—	<b>51</b> over <b>49</b> All <b>Ns</b> over inverted <b>Ns</b>	<i>R</i> <sup>2</sup>	983A
88	—	<b>51</b> over <b>49</b> and only stops on obverse at mintmark	<i>R</i> <sup>2</sup>	983A
89	—	<b>51</b> over <b>49</b> and no stops on obverse	<i>S</i>	983B
90	—	No stop after <b>THE</b>	<i>R</i>	984
91	—	<i>Proof.</i> No stop after <b>THE</b>	<i>R</i> <sup>5</sup>	
92	—	Only stops on obverse at mintmark	<i>R</i> <sup>2</sup>	984A
93	—	Only stops on obverse at mintmark All <b>Ns</b> over inverted <b>Ns</b>	<i>R</i> <sup>2</sup>	984A
94	—	No stop after <b>OF</b> over <b>D</b> and <b>ENGLAND</b>	<i>R</i> <sup>2</sup>	
95	—	No stop after <b>ENGLAND</b>	<i>R</i>	984B
96	—	No stops after <b>ENGLAND</b> and <b>COMMONWEALTH</b>	<i>R</i>	984B
97	—	Error, one <b>M</b> in <b>COMONWEALTH</b>	<i>R</i> <sup>3</sup>	984C
98	—	Struck from shilling obverse die and a halfcrown reverse die <sup>1</sup>	<i>R</i> <sup>7</sup>	984D
99	—	No stops at mintmark <b>N</b> over inverted <b>N</b> in <b>COMMONWEALTH</b>	<i>R</i> <sup>2</sup>	984E

COMMONWEALTH, 1649-60  
**SHILLINGS**

100	<b>1651</b>	Extra stop in <b>COMMON·WEALTH</b> No stop before or after <b>OF</b> and <b>F</b> in <b>OF</b> over <b>D</b>	$R^2$	984F
101	—	Mark of value over inverted value <b>XII</b> over <b>IIIX</b>	$R^d$	?
102	—	Re-entered <b>T</b> in <b>WITH</b>	$R$	?
103	<b>1652</b>		$N$	985
104	—	Date off-set left	$R$	
105	—	Extra stop in <b>COMMON·WEALTH</b>	$R^2$	
106	—	No stops on obverse <b>N</b> over inverted <b>N</b> in <b>COMMONWEALTH</b>	$R$	986D
107	—	No stop after date	$R$	986A
108	—	No stop after <b>THE</b> and <b>N</b> over inverted <b>N</b> in <b>COMMONWEALTH</b>	$N$	986
109	—	No stop after <b>ENGLAND</b>	$R$	986B
110	—	No stop after <b>ENGLAND</b> and Extra stop in <b>COMMON·WEALTH</b>	$R^3$	986G
111	—	Extra stop in <b>COMMON·WEALTH</b> but No stops by mintmark	$R^2$	986H
112	—	<b>2</b> over <b>1</b> and no stop after <b>THE</b>	$R$	985A
113	—	<b>2</b> over <b>1</b> and no stop after <b>ENGLAND</b>	$R$	985A
114	—	Extra stop in <b>COMMON·WEALTH</b> <b>2</b> over <b>2</b> No stops on reverse including by value	$R^2$	985B
115	—	<b>2</b> over <b>1</b> and extra stop in <b>COMMON·WEALTH</b>	$R^3$	986C
116	—	<b>2</b> over <b>2</b> on its side, and no stop after <b>THE</b>	$R^3$	985C
117	—	<b>2</b> over <b>2</b> on its side, and no stop after <b>THE</b> and an extra stop in <b>COMMON·WEALTH</b>	$R$	986H
118	—	<b>2</b> over <b>1</b> ? Error <b>V</b> over <b>O</b> in <b>VS</b>	$R^2$	986E
119	—	Large <b>2</b> and <b>N</b> over inverted <b>N</b> in <b>COMMONWEALTH</b>	$R^2$	
120	—	<b>5 2</b> in date wide apart	$R^2$	
121	—	No stops at mintmark	$R^2$	986F
122	—	No stops at mintmark and Extra stop in <b>COMMON·WEALTH</b>	$R$	986G
123	—	Colon (?) in <b>COMMON:WEALTH</b>	$R^3$	986I
124	<b>1653</b>		$N$	987
125	—	All <b>Ns</b> over inverted <b>Ns</b>	$R$	988C
126	—	Reads <b>COMMONWEALH</b> in error (minus T) <sup>2</sup>	$R^3$	988C
127	—	<b>D</b> over <b>P?</b> in <b>ENGLAND</b>	$R^3$	987A
128	—	<b>T</b> over <b>G</b> in <b>THE</b>	$R^2$	
129	—	No stop after <b>THE</b>	$R$	988A

COMMOMWEALTH, 1649-60  
**SHILLINGS**

130	<b>1653</b>	No stop after <b>THE</b> and Reads <b>COMMONWEALH</b> in error (minus T) <sup>2</sup>	$R^4$	988B
131	—	No stop after <b>COMMONWEALTH</b>	$R^2$	
132	—	No stop after <b>ENGLAND</b>	$R$	988
133	—	No stops at mintmark	$R$	989B
134	—	<b>3</b> over <b>2</b>	$R^2$	989C
135	—	Only stops on obverse flanking mintmark	$R$	989E
136	—	Only stops on reverse after date	$R$	989D
137	<b>1654</b>		$S$	990
138	—	All stops and Ns over inverted Ns	$R$	
139	—	<b>4</b> over <b>3</b> All stops and Ns over inverted Ns	$R$	991
140	—	No stop after <b>ENGLAND</b>	$R$	990A
141	—	<b>4</b> over <b>3</b> and re-entered <b>E</b> in <b>COMMONWEALTH</b>	$R$	?
142	—	Reads <b>ENGLND</b> (minus letter A)	$R^4$	992
143	—	No stop after <b>OF</b>	$R^2$	992A
144	—	<b>N</b> over inverted <b>N</b> in <b>COMONWEALTH</b> Only stops on reverse flanking value		
145	<b>1655</b>		$R^2$	993
146	—	No stop after <b>OF</b>	$R^2$	
147	—	No stop after <b>ENGLAND</b>	$R^2$	993A
148	—	<b>5</b> over <b>4</b>	$R^2$	994
149	—	<b>5</b> over <b>4</b> over <b>3</b>	$R^3$	994A
150	<b>1656</b>		$N$	995
151	—	Reads <b>EGLAND</b> (minus letter N)	$R$	995D
152	—	No stop after <b>ENGLAND</b>	$R$	995A
153	—	No stops at mintmark	$R$	995B
154	—	Extra stop in <b>O·F·</b> but no stop after <b>COMMONWEALTH</b> and the 2 <sup>nd</sup> <b>M</b> over <b>F</b> ?	$R^3$	995C
155	—	No stops on obverse	$R^2$	995D
156	—	No stops on obverse or by value	$R^2$	995E
157	—	Only stops on reverse flanking value	$R^2$	995F
158	<b>1657</b>		$R^5$	996
159	—	No stop after <b>OF</b> and <b>7</b> over <b>6</b> ? (B.M.)	$R^5$	996A
160	—	No stops on obverse	$R^5$	997

Errors; caused by striking have been delisted; e.g. Old ESC 989, 989a & 990b (illustrated as an example). Sub-varieties, due to the alignment of legends and size of lettering etc, are also generally ignored to avoid complication. The general quality of striking and size of flans in this period varies a great deal, especially with the smaller denominations.

The letter N is regularly found struck over an inverted N and recorded as much as possible.

COMMONWEALTH, 1649-60

**SHILLINGS**

**B.** *mm. Anchor* Spink 3218

161	<b>1658</b>	With stops by mintmark	$R^2$	998
162	—	No stops by mintmark	$R^3$	
163	—	No stops on obverse	$R^3$	
164	—	No stop after <b>THE</b>	$R^3$	
165	—	No stop after <b>ENGLAND</b>	$R^3$	998A
166	—	No stop after <b>ENGLAND</b> . 1 <sup>st</sup> <b>O</b> over <b>M</b> and 2 <sup>nd</sup> <b>M</b> over <b>O</b> in <b>COMMONWEALTH</b>	$R^3$	
167	—	<b>8</b> over <b>7</b> no stop after <b>ENGLAND</b>	$R^3$	999A
168	—	<b>G</b> over <b>L</b> in <b>ENGLAND</b>	$R^3$	999
169	<b>1659</b>		$R^7$	1000
170	<b>1660</b>		$R^3$	1001
171	—	No stops by mintmark	$R^3$	
172	—	No stop after <b>ENGLAND</b>	$R^3$	

**PATTERNS**



Blondeau  
C



**C.** **By Blondeau, 1651**

173	<b>1651</b>	Similar to the ordinary shilling Much neater workmanship. Struck in a mill No stops by mintmark and mark of value Milled edge	$R^3$	1002
174	—	Similar, with plain edge (B.M. Collection)	$R^6$	1003

175	<b>1651</b>	<b>By Ramage, 1651</b> His halfcrown dies used on a shilling flan <sup>3</sup> Milled edge (See under halfcrown earlier)	$R^6$	445A
176	—	Similar with a plain edge <span style="float: right;"><i>wt. 6.123g.</i></span>	$R^6$	445C

1 See 1651 halfcrown (*struck on a shilling flan*), note by P.A. Rayner

2 The error; COMMONWEALH (minus T), looks very convincing, so is retained

3 These were thought to be halfcrowns on thin flans, but now transferred to shillings; *Really a shilling struck from a halfcrown reverse die and a shilling obverse die. Only two examples are known, 1 in the British Museum. Some authorities consider these to be shillings but I am still inclined to regard them as halfcrowns struck on a thin flan (P.A.R.)*

COMMONWEALTH, 1649-60  
**SIXPENCES**

Standard design as crown with value shown as • VI •



All stops



No stops by *mm.*



Only stops by *mm*



Colon after ENGLAND:



COMMONWEALTH  
 (Not double struck)



Anchor



All stops



Only stop after date



1657



No stop after  
 COMMONWEALTH



Letters NGLAN  
 over GLAND



Inverted N and  
 no stop after  
 COMMONWEALTH

COMMONWEALTH, 1649-60  
**SIXPENCES**



N over inverted N



No stop after ENGLAND



No stop after THE



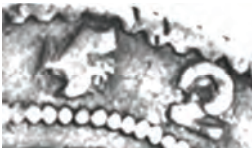
Re-entered D



D over O



Flaw over value



52 over 49



5 over 4, 2 over 1 over 9



2 over 1?



51 over 49



3 over 1



4 over 3



5 over 6 & 7 over 6



5 over 4? & 8 over 7



die flaw?



7 over 6



Small 4 no serifs



1659

COMMONWEALTH, 1649-60  
**SIXPENCES**

A.		<i>mm.</i> SUN	Spink 3219	
ESC	Date	Varieties, remarks, etc	<i>R</i>	(ESC)
177	<b>1649</b>		<i>S</i>	1483
178	—	No stop after <b>ENGLAND</b>	<i>S</i>	1483A
179	<b>1651</b>		<i>N</i>	1484
180	—	<b>N</b> over inverted <b>N</b> in <b>COMMONWEALTH</b>	<i>R</i>	
181	—	No stops at <i>mm.</i>	<i>R</i>	1484A
182	—	No stops after <b>ENGLAND</b>	<i>R</i>	1484B
183	—	<b>51</b> over <b>49</b> No stops after <b>ENGLAND</b> <sup>1</sup>	<i>R</i>	1485
184	—	<b>51</b> over <b>49</b> and no stops at mintmark	<i>R</i>	1485A
185	—	<b>51</b> over <b>49</b> No stop after <b>COMMONWEALTH</b> <sup>2</sup>	<i>R</i>	1485B
186	<b>1652</b>		<i>N</i>	1486
187	—	Inverted <b>N</b> in <b>COMMONWEALTH</b>	<i>N</i>	1486C
188	—	Inverted <b>N</b> and No stop after <b>COMMONWEALTH</b>		1486C
189	—	Re-entered <b>D</b> in <b>ENGLAND</b>	<i>R</i>	1486A
190	—	No stops by mintmark	<i>R</i>	1486A
191	—	Only stop in reverse legend after date <sup>2</sup>	<i>R</i>	1486B
192	—	<b>52</b> over <b>49</b> ?	<i>R</i>	1487
193	—	Large <b>2</b> over <b>1</b> ?	<i>R</i>	1487A
194	—	<b>52</b> over <b>49</b> extra <b>M</b> in <b>COMMONWEALTH</b> <sup>2</sup>	<i>R</i> <sup>5</sup>	1487B
195	—	<b>52</b> over <b>1</b> over <b>49</b> and an extra <b>M</b> in <b>COMMONWEALTH</b> <sup>2</sup>	<i>R</i> <sup>5</sup>	1487D
196	—	Mark of value punched over lower placed <b>I</b>	<i>S</i>	1487C
197	<b>1653</b>		<i>S</i>	1488
198	—	No stop after <b>THE</b>	<i>R</i>	1488A
199	—	<b>3</b> over <b>I</b>	<i>R</i>	1488C
200	<b>1654</b>		<i>R</i>	1489
201	—	<b>4</b> over <b>3</b>	<i>R</i> <sup>2</sup>	1490
202	—	Small <b>4</b> without serifs	<i>R</i> <sup>2</sup>	1490
203	<b>1655</b>		<i>R</i> <sup>4</sup>	1491
204	<b>1656</b>		<i>S</i>	1492
205	—	Only stops on obverse are at mintmark	<i>R</i>	1492A
206	—	No stop after <b>ENGLAND</b>	<i>R</i>	
207	<b>1657</b>		<i>R</i> <sup>5</sup>	1493
208	—	<b>5</b> over <b>6</b> & <b>7</b> over <b>6</b> and letters <b>NGLAN</b> over <b>GLAND</b>	<i>R</i> <sup>5</sup>	1493A

COMMONWEALTH, 1649-60  
**SIXPENCES**

<b>B.</b>		<i>mm.</i> ANCHOR	Spink 3220	
209	<b>1658</b>		$R^3$	1494
210	—	<b>8 over 7</b>	$R^3$	1495
211	—	<b>D over O in ENGLAND</b>	$R^4$	1495A
212	—	No stop after <b>COMMONWEALTH</b>	$R^3$	?
213	<b>1659</b>		$R^6$	1496
214	—	No stop after <b>COMMONWEALTH</b>	$R^6$	1496A
215	<b>1660</b>		$R^3$	1497
216	—	No stop after <b>THE</b>	$R^4$	1497A

**PATTERNS**



<b>C.</b>		<b>By Blondeau, 1651</b>		
217	<b>1651</b>	As the ordinary sixpence, but of much neater workmanship and struck in a press. No stops by value and mintmark. <i>Edge, milled</i>	$R^2$	1498
218	—	Similar. Thinner flan, plain edge <i>(Not traced)</i>	$R^6$	1498A

COMMONWEALTH, 1649-60  
SIXPENCES



Ramage  
D



**D. By Ramage, 1651**

219	<b>1651</b> <i>Leg. Edge</i>	Dated <b>1651</b> on the edge only As the ordinary sixpence, but of much neater workmanship and struck in a press ★ TRVTH ★ AND ★ PEACE (both <i>obv.</i> & <i>rev</i> ) ★ TRVTH ★ AND ★ PEACE ★ 1651 between two rows of beading	$R^5$	1499
220	—	<i>In gold</i> <span style="float: right;"><i>wt. 13.94g</i></span>	$R^6$	1500
221	—	<i>In copper. Edge, plain.</i>	$R^6$	1501
222	—	<i>Edge, ★★★★★★</i> between two rows of beading <sup>3</sup>	$R^7$	1502
223	—	<i>In copper, plated</i>	$R^7$	1503

Notes

The general standard of striking is poor with a large number of sub-varieties due to their hand-made nature. Specimens in high grades are very much rarer than indicated

- 1 This obverse die occurs paired with reverse dies dated 52 over 49, and what appear to be 52 over 51 over 49
- 2 Two examples of 3Ms spelling error recorded. Each is from a different reverse die, one clearly reading 1652/1/49, the other 1652/49 but it's unclear if also over a 1. The obverse die was also used for a half unite in gold (ex R.C. Lockett Collection)
- 3 This is probably not in silver, but silver-plated copper, i.e. 1502 and 1503 are the same coin. Both are in the B.M. and only a specific gravity test could determine their metal content if permitted

COMMONWEALTH, 1649-60  
**TWOPENCE, PENNY & HALF-PENNY**

No legend, date or mintmark

**HALFGROAT (TWOPEACE)**

Standard design showing value · II · above conjoined shields



(x1.5)



Spink 3221

ESC	Varieties, remarks, etc	R	(old ESC)
224	Caveat; crude dies are contemporary forgeries	C	2160
225	Shields transposed	R <sup>3</sup>	2160A
226	Mark of value reads <b>H</b> due to die flaw	R	
227	Mark of value reads <b>III</b> due to double striking	R	

**PENNY**

As Halfgroat but showing value · I · above conjoined shields



(x1.5)



Spink 3222

228	Caveat; crude dies are contemporary forgeries	C	2263
229	No stops at mark of value	R <sup>2</sup>	2263A

**HALF-PENNY**

Not showing any value above single reverse shield



(x2)



Spink 3223

230	Caveat; crude dies are contemporary forgeries	C	2363
-----	-----------------------------------------------	---	------

Note: After 1672 the half-penny was only struck in copper!

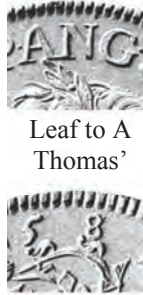
## OLIVER CROMWELL, 1656-58 INTRODUCTION

A set of coins with the Protector's portrait was issued by his order and with the consent of the Council. These pieces are of the finest workmanship, the dies having been executed by that greatest of engravers, Thomas Simon, and the striking done by means of Blondeau's machine. Most authorities consider that these pieces were never put into circulation and must therefore, be classed as patterns. In the writer's view, however, the rare halfcrowns of 1656 appear to have circulated as they nearly always turn up in worn condition. The coins of 1658 were struck in large quantities, except for the sixpence, and were probably intended for circulation: the majority were not issued owing to Cromwell's death in September of that year.

Some of Simon's puncheons for the Cromwell coinage were sold in the Low Countries and an imitation crown was made there, known as the '*Dutch crown*'. Other Dutch dies were prepared and some of these found their way back to the Mint, and in 1738 it was decided to strike a set of Cromwell's coins. Shillings and sixpences were struck from Dutch dies; and John Tanner, the Engraver at the Mint, made a crown from new dies.<sup>1</sup> Although not originals, these pieces always realise a good price as they are all rare. (P.A. Rayner, 1949)

1 D.F. Allen. *The Coinage of Cromwell and its imitations*. B.N.J. xxiv, p. 191

OLIVER CROMWELL 1656-58  
CROWNS



Leaf to A  
Thomas'

8 over 7



Inverted N  
(Dutch)

8



Tanner



Standard obverse and reverse by Thomas Simon

*Obv.*  
*Leg.*

Draped and laureate bust, left  
**OLIVAR · D · G · R · P · ANG · SCO · HIB & c · PRO**  
*Oliver by the Grace of God Protector of the Republic of England  
Scotland and Ireland*

## OLIVER CROMWELL 1656-58 CROWNS

*Rev.* Large English crown above the quartered arms, left to right: - England, Scotland, Ireland and England. Superimposed in the centre is Cromwell's rampant lion.

The date above is divided by the cross on top of the crown

*Leg.* **PAX · QVÆRITVR · BELLO** *Peace is sought through war*

*Edge* **HAS · NISI · PERITVRVS · MIHI · ADIMAT · NEMO** ★

*Let no-one remove these (letters) from me under penalty of death*

Spink 3226

ESC	Date	Varieties, remarks, etc	R	L&S	(Old ESC)
240	<b>1658</b>	By <b>Thomas Simon</b> <b>8</b> over <b>7</b> ( <i>Only known with date altered from 1657<sup>1</sup></i> ) Top leaf of laurel to left of right foot of <b>A</b> Lettered edge as above	S	1	10
241	—	<i>In gold (2 known; wts. 716grs-46.39g &amp; 758 grs-49.12g)</i>	R <sup>7</sup>	1A	10A
242	—	<i>In pewter (Contemporary cast with a very pronounced flaw across the neck)</i>	R <sup>7</sup>	1B	10B

Spink 3226A

243	<b>1658</b>	<b>'Dutch copy'</b> (Artist unknown) Similar, but top leaf of laurel to first limb of inverted letter <b>N</b> . Not an over-date Lettered edge as above <span style="float: right;"><i>wt. 32.58 g</i></span>	R <sup>3</sup>	2	11
244	—	<i>Silver gilt</i> <span style="float: right;"><i>wt. 30.28 g</i></span>	R <sup>6</sup>	2A	11A
245	—	<i>In pewter. Edge rough, may have been lettered but now plain. (In British Museum Collection)</i>	R <sup>7</sup>	2D	

Spink 3226B

246	<b>1658</b>	<b>J.S. Tanner's copy</b> (struck in 1738) Similar, but slightly different features, top leaf of laurel between <b>A</b> and <b>N</b> , the <b>N</b> not inverted and leaf not so pointed; The beading of the border is wider; <span style="float: right;"><i>wt. 31.47 g</i></span> Flaw in all <b>Ps</b> Stops after <b>HIB</b> and <b>PRO</b> . Lettered edge as above	R <sup>3</sup>	3	13
247	<b>1658</b>	Similar. <i>Edge, plain</i> <span style="float: right;"><i>wt. 28.31 g</i></span>	R <sup>3</sup>	3A	14

## OLIVER CROMWELL 1656-58 CROWNS

ESC	Date	Varieties, remarks, etc	R	L&S	(Old ESC)
248	1658	<b>Simon / Tanner</b> Simon's obverse muled with Tanner's reverse <i>Edge, plain; on a thick flan wt. 638 grains- 41.34g</i>	R <sup>7</sup>	3B	14A
249	1658	<b>Tanner / Simon</b> Similar, but muling reversed; Tanner's obverse muled with Simon's reverse	R <sup>7</sup>	4	14B

## PATTERNS (Imitation)



250	<b>1843</b> <i>Obv</i>  <i>Leg</i> <i>Rev</i>  <i>Leg</i>  <i>Edge</i>	Imitation Pattern Crown by <b>L.C. Wyon</b> Similar to Simon's bust of Cromwell, but with different spacing and style of lettering <b>OLIVAR·D·GR·P·ANG·SCO·HIB&amp;c PRO</b> Bust of Louis XVIII left, with long hair tied with a ribbon <b>W WYON R. A. CUDI JUSSIT</b> <i>"W. Wyon R.A. ordered this to be struck"</i> <b>LEONARD.C.WYON 1843</b> below truncation Plain. <i>In pewter, on a 38 mm flan wt. 32.46gm</i>	R <sup>7</sup>	5	14C
-----	------------------------------------------------------------------------------------------------	-------------------------------------------------------------------------------------------------------------------------------------------------------------------------------------------------------------------------------------------------------------------------------------------------------------------------------------------------------------------------------------------------------------------------------------------------	----------------	---	-----

### Notes

- 1 At a very early stage a flaw started in the obverse die near the **O** in **OLIVAR** and slowly stretched right across the bust. They can be obtained with all the stages of the flaw showing. Some of the later strikings from this die show an attempt was made to repair the flaw.  
The frosting is achieved by tiny punch marks. This process is called *Mezotinto*
- 2 Leonard Wyon was only 16 years of age upon executing this piece
- 3 Tin, pewter or white metal are descriptions for the same metal  
Linecar & Stone list some other variations on pages 3-6 which are dubious and ignored

# OLIVER CROMWELL, 1656-58 HALFCROWNS

By Thomas Simon



HI



Spurious fabrication 1657



HIB



*Obv.* As crown, with two readings of legend  
*Leg.* **OLIVAR · D · G · RP · ANG · SCO · HIB (HI) &c PRO**  
*Rev.* As crown  
*Leg.* **PAX · QVÆRITVR · BELLO**  
*Edge* **HAS · NISI · PERITVRVS · MIHI · ADIMAT · NEMO +**

Spink 3227

ESC	Date	Varieties, remarks, etc	R	(Old ESC)
251	1656	Legend reads <b>HI &amp;c PRO</b>	R <sup>3</sup>	446

Spink 3227A

252	1658	Legend reads <b>HIB &amp;c PRO</b>	S	447
253	—	<i>Proof in gold</i>	(6 known)	R <sup>3</sup> 447A

### Caveat

xxx	1657	<i>Fabrication. Genuine 1658 coin altered to 1657</i>		
-----	------	-------------------------------------------------------	--	--

## OLIVER CROMWELL, 1656-58 SHILLINGS



HIB · PRO

*Obv.* As crown, with two readings of legend  
*Leg.* **OLIVAR · D · G · RP · ANG · SCO · HIB & PRO**  
*Rev.* As crown  
*Leg.* **PAX · QVÆRITVR · BELLO**

ESC	Date	Varieties, remarks, etc	R	(Old ESC)
254	1658	<b>By Thomas Simon.</b> Always a flaw below the <b>P</b> in front of laurel wreath. Reads <b>HIB &amp; c PRO</b> . <i>Edge, plain</i>	S	1005
255	—	<i>In gold. Edge, milled</i>	R <sup>7</sup>	1005A

Spink 3228A

256	1658	<b>Dutch copy</b> Similar but slightly different features and <i>Leg.</i> reads <b>HIB · PRO</b> (&c omitted) No flaw Inverted N in ANG. <i>Edge, plain</i> <i>Weights vary by ± 1g</i>	R <sup>6</sup>	1006
257	—	On a thick flan. <b>8</b> of date over a smaller <b>8</b>	R <sup>6</sup>	1006A
258	—	<i>Edge, grained</i>	R <sup>6</sup>	1006B
259	—	<i>In copper</i>	R <sup>6</sup>	1007

**Unofficial fabrication** (Possibly a Trader's mark)

xxx	1658	<i>Genuine coin countermarked with a swan below bust</i>
-----	------	----------------------------------------------------------

# OLIVER CROMWELL, 1656-58 SIXPENCES

Thomas Simon



HIB & c PRO



*Obv.* As the crown  
*Leg.* 1 **OLIVAR · D · G · RP · ANG · SCO · HIB & c PRO**  
*Rev.* As crown  
*Leg.* **PAX · QVÆRITVR · BELLO**  
*Edge* Plain or milled

(Official issue by Simon)

Spink 3229

ESC	Date	Varieties, remarks, etc	R	(Old ESC)
260	1658	Laurel leaf points to left limb of A 4 berries in wreath. <b>HIB &amp; c PRO</b> <i>Edge, milled</i>	R <sup>6</sup>	1504
261	—	Similar. <i>Edge, plain. In pewter</i>	R <sup>7</sup>	1504A

## Dutch copy by Tanner

As before, but legend reads **HIB · PRO**



HIB PRO



Liberty cap  
(Cast)



## OLIVER CROMWELL, 1656-58 SIXPENCES

(Dutch copy by Tanner)

Spink 3229A

262	<b>1658</b>	Similar, but reads <b>HIB · PRO</b> (minus &c) Laurel leaf points to <b>P</b> , no berries in wreath <i>Edge, milled</i> <sup>1</sup> <i>Heaviest noted 6.24g (Norweb 48/432)</i>	<i>R</i> <sup>5</sup>	1505
263	—	<i>Edge, plain</i>	<i>R</i> <sup>4</sup>	1506
264	—	<i>In bronze</i> <i>(Not traced)</i>	<i>R</i> <sup>6</sup>	1506A

### *Unofficial fabrication*

xxx	<b>1658</b>	<i>Cast copy with the liberty cap below bust</i> <sup>2</sup>
-----	-------------	---------------------------------------------------------------

#### Notes

- 1      These are on flans varying greatly in weight and thickness. The heavier pieces were at one time regarded as ninepences. Only four genuine Cromwell sixpences are believed to exist, although rather more of the copies were executed in the Low Countries by Tanner c. 1738.
  
- 2      “*The portrait of Cromwell with the liberty cap beneath may relate to the Netherlands, where the cap was an emblem of political freedom*” “*This piece is controversial and is possibly a later cast*” (Wilson & Rasmussen, p. 76) (St James’s Auction 2, lot 157)

## INTRODUCTION CHARLES II 1660-85

At the beginning of this reign, Thomas Simon, who had been Chief Engraver at the Mint under the Commonwealth, applied for reinstatement, and although the King had already promised the position to Thomas Rawlins, he did in fact on May 31<sup>st</sup> 1661, grant *'to Thomas Simon ..... the office of one of the engravers of the King's Arms shields and stamp'*. It would appear that Simon shared the position with Rawlins, but most of the work devolved upon the former, although the two men may have co-operated to some extent in the production of dies for the three hammered coinages of 1660 to 1661 (The indenture, dated 20<sup>th</sup> July 1660, authorises silver crowns, but none are known). These hammered coinages consist of three main issues, the first having no mark of value or inner circles. The second has the mark of value added behind the King's head, as instructed by a warrant of 28<sup>th</sup> November 1661. The third issue, much the largest or at any rate the most common today, has an inner circle on both sides as well as the mark of value. There is practically no doubt that Simon was sole responsible for the dies of the undated Maundy and similar pieces, as in April 1665 he claims £35 in payment for *'altering the stamps of the fourpenny, threepenny, tuppenny and penny by way of the mill'*. As this claim is of later date than that on which Simon was displaced by John Roettier, it shows clearly that he worked on dies for minor coins almost until his death during the Great Plague of 1665. John and Joseph Roettier, two brothers whose family had rendered services to Charles during his exile, were appointed engravers in 1661 and in January of the following year were directed to prepare all the necessary dies for the new 'milled' coinage. Shortly afterwards they were instructed *'to engrave a trial crown in competition with Simon, and all three men to cease all other work until the task be completed'*. The results were the famous 'petition crown' by Simon, and the pattern (E.S.C. 68-71) by the Roettiers: the sequel is of course well known; John Roettier was appointed Chief Engraver in May 1662 and was assisted by his brother Joseph in the production of dies for milled coinage. Joseph left the Mint and went to France in 1672. In April 1662 Peter Blondeau was recalled from France, appointed Engineer, a new post and was instructed *'to furnish all mills, rollers, presses and other instruments, to cut, flatten, make round and size the pieces; the engine to make the edges of money with letters and grainings, the great presses for coining of moneys and all other tools and engines for the new way of coining'*.

George Bower was appointed an Engraver in Ordinary in 1664, but worked mainly on the production of medals. He is not known to have engraved any coin dies for Charles II or James II.

**INTRODUCTION**  
**CHARLES II**  
**1660-85**

The first ‘milled’ halfcrowns and shillings were issued in 1663, the dated twopence in 1668, the dated fourpence, threepence and penny in 1670, and the sixpence in 1674. Thus four major and four minor denominations were struck in silver, the former having on their reverse four shields of arms in the form of a cross, and the small coins their value represented by one to four Cs. The crown and halfcrown have an inscribed edge; on this are the words **DECVS ET TVTAMEN** which translated means ‘*An ornament and a safeguard*’, followed by the monarch’s regnal year, which in this reign was reckoned from the death of Charles I. This practice was continued on the crown with a few breaks until 1935, and on halfcrowns until the end of the reign of George II. The regnal year does not correspond to the calendar year, and for this reason we usually find coins of the same date with two different regnal years on the edge. Another custom previously only adopted for Welsh silver was extended in this reign, that is, the custom of marking some of the coins with a symbol to denote the source of metal from which they were struck:

*Elephant, or Elephant and Castle, the Africa (‘Guinea’) Co.,*  
the symbol used on its badge

*Plumes, silver from mines in Wales.*

*Rose, silver from mines in the West of England* (P.A. Rayner, 1949)

Charles II began the tradition whereby the portrait of each monarch faced in the opposite direction to his or her predecessor; Cromwell left - Charles II right – James II left etc. (The only exception; Edward VIII faces left and not right)

CHARLES II, 1660-85  
**FIRST HAMMERED ISSUES**

**Variants of the obverse legend found in this series**

1	<b>CAROLVS</b>	<b>II</b>	<b>D</b>	<b>G</b>	<b>MAG</b>	<b>BRIT</b>	<b>FRAN</b>	<b>ET</b>	<b>HIB</b>	<b>REX</b>
2	—	—	—	—	—	—	<b>FRA</b>	—	—	—
3	—	—	—	—	—	—	<b>FR</b>	—	—	—
4	—	—	—	—	—	—	—	—	<b>H</b>	—
5	—	—	—	—	—	<b>BRI</b>	<b>FRA</b>	—	<b>HIB</b>	—
5E	<b>CAROLV</b>	—	—	—	—	—	—	—	<b>HIB</b>	—
6	<b>CAROLVS</b>	—	—	—	—	—	<b>FR</b>	—	—	—
6E	<b>CARLVS</b>	—	—	—	—	—	—	—	—	—
7	<b>CAROLVS</b>	—	—	—	—	—	—	—	<b>HI</b>	—
8	—	—	—	—	—	<b>BR</b>	—	—	<b>HIB</b>	—
9	—	—	—	—	—	—	—	—	<b>HI</b>	—
10	—	—	—	—	—	<b>B</b>	<b>FR</b>	<b>ET</b>	<b>H</b>	—
11	—	—	—	—	—	<b>B</b>	<b>F</b>	<b>ET</b>	<b>HIB</b>	—
12	—	—	—	—	<b>MA</b>	<b>BR</b>	—	—	<b>HI</b>	—
13	—	—	—	—	<b>M</b>	—	<b>FR</b>	<b>ET</b>	<b>HIB</b>	—
14 <sup>1</sup>	—	—	—	—	<b>M</b>	—	—	<b>ET</b>	<b>HI</b>	—
16	—	—	—	—	—	—	<b>F</b>	<b>ET</b>	<b>H</b>	—
17	—	—	—	—	—	<b>B</b>	—	<b>ET</b>	<b>H</b>	—
18	—	—	—	—	—	<b>B</b>	—	<b>ET</b>	<b>HIB</b>	—
19 <sup>2</sup>	<b>CAPOLVS</b>	—	—	—	<b>M</b>	<b>BP</b>	<b>F</b>	<b>FT</b>	<b>H</b>	<b>PFX</b>
20	<b>CPOLVS</b>	—	—	—	<b>M</b>	<b>BP</b>	<b>F</b>	—	<b>HI</b>	<b>PFX</b> (sic No ET)
21	<b>CROLVS</b>	—	—	—	<b>MA</b>	<b>B</b>	<b>F</b>	<b>ET</b>	<b>HI</b>	<b>REX</b>

*Charles II by the Grace of God King of Great Britain, France & Ireland*

**Standard reverse legend**

**CHRISTO AVSPICE REGNO**

*I reign under the auspice of Christ*

Notes

- 1 Some specimens are found with legend reading M PR FR ET HI REX, since this is almost certainly the result of filled dies they are delisted
- 2 This peculiar legend is most likely due to a filled die. Large numbers of dies were used in this series, as proven by the variations in the alignment of legends etc. Unfortunately these differences are not significant enough to warrant inclusion as major varieties in this work.

CHARLES II, 1660-85  
**FIRST HAMMERED ISSUES**

**Type A**

No mark of value or inner circles  
 Undated, *mm.* Crown

**HALFCROWN**



Reverse 1



BRIT FRAN



Reverse 1a

- Obv.* Crowned and draped bust, left. King with long hair falling over his shoulders. Mintmark Crown (on obverse only)
- Leg.* 1 **CAROLVS•II•D•G•MAG•BRIT•FRAN•ET•HIB•REX**
- Rev.* Square-topped shield over a long forked cross
- Leg.* **CHRISTO • AVSPICE • REGNO**
- 1 No stop above shield and no *edge* legend
- 1a With a stop above shield

Spink 3307

ESC	<i>Leg.</i>	Varieties, remarks, etc	<i>R</i>	(Old ESC)
270	1	Reverse 1	<i>R</i> <sup>3</sup>	448
271	1	Reverse 1a	<i>R</i> <sup>3</sup>	448A

CHARLES II, 1660-85  
**FIRST HAMMERED ISSUES**

**SHILLING**



Reverse 1



BRIT FR



Reverse 1a

Spink 3308

272	3	Reverse 1	R	1010
273	3	Reverse 1a	R	1009

**SIXPENCE**



BRIT FRAN



Spink 3309

274	1	Reverse 1a	R	1507
-----	---	------------	---	------

**HALFGROAT  
 (TWO PENCE)**



BRIT HIB



BRIT H



MAG B H

CHARLES II, 1660-85  
**FIRST HAMMERED ISSUES**

- Leg.* 3    **CAROLVS . II . D.G. MAG . BRIT . FR . ET . HIB . REX**  
 4    **CAROLVS II D G MAG BRIT FR ET H REX**  
 10    **CAROLVS . II . D:G: MAG : B : FR : ET . H . REX**

Spink 3310

ESC	<i>Leg</i>	Varieties, comments etc.	<i>Robinson</i>	<i>R</i>	(Old ESC)
275	3	With stops both sides <i>5 harp strings</i>	<i>p. 143,2(i)</i>	<i>S</i>	2161
276	4	No stops obverse <i>5 harp strings</i> Minute stops flanking mintmark	<i>p. 143,2(ii)</i>	<i>S</i>	2162
277	4	No stops obverse, reads <b>RFX</b> (filled die?) Reverse: no stop after <b>REGNO</b> <i>5 strings</i>	<i>p. 143,2(iii)</i>	<i>S</i>	2162A
278	10	Reverse with stops <i>5 harp strings</i>	<i>p. 143,2(iv)</i>	<i>S</i>	2163

**PENNY**  
**Type A<sup>1</sup>**

With crown mintmark



(x1.5)

MAG BRIT HIB

- Leg.* 3    **CAROLVS . II . D.G. MAG . BRIT . FR . ET . HIB . REX**  
 4    **CAROLVS II D G MAG BRIT FR ET H REX**  
 21    **CROLVS . II . D.G. MA . B . F . ET . HI . REX**

**C.**

Spink 3311

ESC	<i>Leg</i>	Varieties, comments etc.	<i>Robinson</i>	<i>R</i>	(Old ESC)
279	3	With stops both sides	<i>p. 143,1 (i)</i>	<i>R<sup>2</sup></i>	2264
280	4	No stops both sides. Reads <b>ET H REX</b>	<i>p. 143,1 (ii)</i>	<i>R<sup>2</sup></i>	2264A
281	21	Reads <b>CROLVS</b> (minus A)	<i>p. 143,1 (iii)</i>	<i>R<sup>2</sup></i>	2264B

CHARLES II, 1660-85  
**FIRST HAMMERED ISSUES**

**PENNY**  
**Type A<sup>2</sup>**  
*No mintmark*



M BR F HI



BR F ET H



CAPOLVS

- Leg.* 17 **CAROLVS II D G M BR F ET H REX**  
 20 **CAPOLVS II D G M BP F HI PEX** (minus ET)  
 21 **CROLVS . II . D.G. MA . B . F . ET . HI . REX** (minus A & ET)

Spink 3312

ESC	<i>Leg</i>	Varieties, comments etc.	<i>Robinson</i>	<i>R</i>	(Old ESC)
282	17	No stops on reverse	<i>p. 143,3 (ii)</i>	<i>R</i> <sup>3</sup>	2265
283	20	Note: Ps for Rs. (minus ET) Stop above King's head <i>5 harp strings</i>	<i>p. 143,3 (i)*</i>	<i>R</i>	2266
284	21	(minus A & ET)			

\*Robinson quotes this legend as reading CPOLVS (although not traced, numbered)

CHARLES II, 1660-85  
**SECOND HAMMERED ISSUES**

**Type B**  
**With mark of value**  
 (No inner circles)

**HALFCROWN - XXX**



BRIT FRAN



S over S



Reverse 1a



BRIT FRA



Large XXX



BRI FRA

*Mm.* On *obv.* only, with or without stops left and right  
*Rev.* 1a With a stop above the shield

Spink 3313

ESC	Leg.	Varieties, remarks, etc	R	(Old ESC)
285	1	<b>BRIT FRAN</b>	<i>R</i> <sup>1</sup>	449
286	2	<b>BRIT FRA</b>	<i>R</i> <sup>5</sup>	450
287	5	<b>BRI FRA</b> with small xxx	<i>R</i> <sup>1</sup>	451
288	5	<b>BRI FRA</b> with large XXX	<i>R</i> <sup>1</sup>	451A
289	5	<b>BRI FRA</b> S over S in CHRISTO	<i>R</i> <sup>1</sup>	451B

CHARLES II, 1660-85  
**SECOND HAMMERED ISSUES**

**SHILLING - XII**



BRI HIB



Reverse 1a



BRI HI



BR HIB



BR HI

Spink 3314

290	6	<b>BRI FR ET HIB</b>	$R^2$	1011
291	7	<b>BRI FR ET HI</b>	$R^5$	1012
292	8	<b>BR FR ET HIB</b>	$R^2$	1013
293	9	<b>BR FR ET HI</b>	$R^2$	1014

CHARLES II, 1660-85  
**SECOND HAMMERED ISSUES**

**SIXPENCE – VI**



BRI HIB



Reverse 1a

Spink 3315

294	6	<b>BRI FR ET HIB</b>	<i>R</i> <sup>2</sup>	1508
295	7	<b>BRI FR ET HI</b>	<i>R</i> <sup>2</sup>	1509

**HALFGROAT - II**  
 (TWO PENCE)



B FR ET H



Obverse B



Reverse 1a



(x1.5)

Spink 3316

296	10	<b>MAG B FR ET H REX</b>	<i>R</i> <sup>2</sup>	2164
-----	----	--------------------------	-----------------------	------

CHARLES II, 1660-85  
**THIRD HAMMERED ISSUES**

**Type C**  
 With mark of value and inner circles

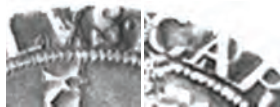
**HALFCROWN – XXX**



BR FR



mm. between stops



V over R    A over R



Reverse 2



CAROLV



BRIT FRA



BRI FRA

Spink 3321

ESC	Leg.	Varieties, remarks, etc	R	(Old ESC)
297	2	<b>MAG BRIT FRA</b>	S	452
298	5	<b>MAG BRI FRA</b>	S	453
299	5E	<b>MAG BRI FRA</b> <i>Error, CAROLV</i>	R	454
300	6	<b>MAG BRI FR :</b>	R	455
301	8	<b>MAG BR FR :</b>	N	456
302	8	<b>MAG BR FR :</b> Obverse mintmark between stops	N	?
303	8	<b>MAG BR FR :</b> A over R in <b>CAROLVS</b>	R <sup>3</sup>	?
304	8	<b>MAG BR FR :</b> V over A in <b>CAROLVS</b>	R <sup>3</sup>	?
305	8	<b>MAG BR FR :</b> Bust to lower edge of coin	R <sup>5</sup>	456B
306	12	<b>MA BR FR HI?</b>	R <sup>2</sup>	456A

CHARLES II, 1660-85  
**THIRD HAMMERED ISSUES**

**SHILLING - XII**



BRIT FR

BRI FRA

CARLVS

2

*Rev. 2; with; mm. crown, usually a stop each side*

Spink 3322

307	2	<b>BRIT FRA ET HIB</b>	$R^2$	1015
308	3	<b>BRIT FR ET HIB</b> and no stops at mintmark Large letters on reverse	$R^3$	1016
309	5	<b>BRI FRA ET HIB</b> Large XII	$R^2$	1019
310	6	<b>BRI FR ET HIB</b>		1018
311	6	<b>BRI FR ET HIB</b> Small XII		1019A
312	6E	<b>BRI FR ET HIB</b> <i>Error, CARLVS</i>	$R^3$	1019B
313	7	<b>BRI FR ET HI</b>	$R$	1021A
314	8	<b>BR FR ET HIB</b>	$R$	1020
315	9	<b>BR FR ET HI</b>	$R$	1021

**SIXPENCE - VI**



Reverse 2



Reverse 3



Obverse 1



Reverse 2?



3 - large crown



3- small crown

BR I FRA ET HIB

Spink 3323

316	5	Obverse (1) no stops by mintmark	$S$	1510
317	5	Obverse (1) no stops by mintmark Large mintmark on reverse	$S$	1510C
318	5	Obverse (2) mintmark with a stop left	$S$	1510A
319	5	Obverse (3) mintmark between stops	$S$	1510B
320	5	On thicker flan (B.M.) <i>(Possibly a shilling blank)</i>	$R^6$	1511

CHARLES II, 1660-85  
**THIRD HAMMERED ISSUES**

**Type A**

**SET OF FOUR COINS**  
**GROAT, THREEPENCE, HALFGROAT & PENNY**

(These were never issued in sets but collectors like to assemble them)



321		CAROLVS II D G M BR FR ET HI REX	N	2364
-----	--	----------------------------------	---	------

The following denominations are listed and numbered to highlight varieties

CHARLES II, 1660-85  
**THIRD HAMMERED ISSUES**

**GROAT – III**  
 (FOURPENCE)



BR FR ET HIB



Reverse 1

Spink 3324

ESC	Varieties, comments etc.	Robinson	R	(old ESC)
322	<b>D. G. MAG. BR. FR. ET. HIB. REX.</b> All stops in reverse legend (5 strings)	<i>p. 144,12(i)</i>	R	1839
323	As before but no stop before <b>CHRISTO</b> and after <b>REGNO</b> (5 strings)	<i>p. 144,12(ii)</i>	R	
324	As before but no stop before <b>CAROLVS</b> and after <b>REX</b> (5 strings)	<i>p. 144,12(iii)</i>	R	

**THREEPENCE – III**



M BR FR HI



Reverse 3

Spink 3325

325	<b>D. G. M. BR. FR. ET. HI. REX.</b> (4 strings)	<i>p. 144,11</i>	R	1957
-----	--------------------------------------------------	------------------	---	------

CHARLES II, 1660-85  
**THIRD HAMMERED ISSUES**

**HALFGROAT – II**  
 (TWO PENCE)



Obverse C



BRI FRA



BR FR



Reverse 3

Spink 3326

ESC	Varieties, comments etc.	Robinson	R	(Old ESC)
326	<b>D: G: MAG: BRI: FRA: ET. HIB. REX</b>	<i>p. 144,10(i)</i>		
327	As above, with stop before <b>CAROLVS</b> and after <b>REX</b> .	<i>p. 144,10(ii)</i>		
328	<b>D. G. MAG: BRI: FRA: ET. HIB. REX</b> Reverse: <b>CHRISTO – AVSPICE □</b> <b>REGNO;</b>	<i>p. 144,10(iii)</i>		
329	<b>D: G: MAG: BRI: FR: ET. HIB. REX</b> No stops on reverse	<i>p. 144,10(iv)</i>		
330	<b>D: G: MAG: BR: FR: ET. HIB. REX</b>	<i>p. 144,10(v)</i>		
331	King's name miss-spelt <b>CAROLLVS</b>	<i>p. 144,10(vi)</i>		

**PENNY - I**



M B F ET HIB



Obverse E



Reverse 2



(x1.5)

Spink 3327

332	<b>D G MAG: BR: FR: ET. HIB REX</b>	<i>p. 143,9(i)</i>	R <sup>2</sup>	2267
333	<b>D. G. M. BR. FR. ET. HIB. REX</b>	<i>p. 143,9(ii)</i>		
334	<b>D: G: M B F ET HIB REX</b>	<i>p. 143,9(iii)</i>		
335	<b>D G M. B. F. ET. HIB REX</b>	<i>p. 143,9(iv)</i>		
336	<b>D. G: M:B: F: ET. HIB: REX</b>	<i>p. 144,9(v)</i>		
337	<b>MAG BR FR RT HIB</b>	<i>p. 144,9(vi)</i>		
338	<b>MAG B F ET HIB</b>	<i>p. 144,9(vii)</i>		

CHARLES II, 1660-1685  
CROWNS

**OBVERSES**

Four of the many different positions of ties by Alan Broad<sup>1</sup>



A, B & C – 1<sup>st</sup> bust – GRA •  
Stop above - Rose below



Both from top curl



Both from between curls



D – 1<sup>st</sup> bust var. (larger)  
II above - Rose below



E, G, H & I - 1<sup>st</sup> bust var.  
(No rose) Stop after II •  
Upper tie to R



Upper from top curl, lower from between curls



Both from lower curl



J (E variety) GRATIA  
No stop after II  
Upper tie to O

Type F - see below - *℞* & extra curl on neck



K – 2<sup>nd</sup> bust  
Twisted ties



D – Twisted ties



D<sup>1</sup> – Crooked ties



L & N – 2<sup>nd</sup> bust variety  
Crooked ties

CHARLES II, 1660-1685  
CROWNS

OBVERSES



Type M – 2<sup>nd</sup> bust  
Elephant below. Ties D<sup>1</sup>



E – Elephant



F – Short ties  
curve outwards



Type O – 3<sup>rd</sup> bust  
Short ties



Type P – 4<sup>th</sup> bust  
Longer ties



G – Longer ties  
slant downwards



Elephant  
& castle



Type Q – 4<sup>th</sup> bust  
Elephant & castle below



Type F (as E, with)  
JR & extra curl on neck



Normal pellet frosting  
*Mezotinto*



Striped frosting  
With rose below

CHARLES II, 1660-1685  
CROWNS

REVERSES



Reverse 1



Frosted Cs



Line below  
crown



Reverse 2



No stops in legend



No line  
below crown



Garter star



RE·X



T over R



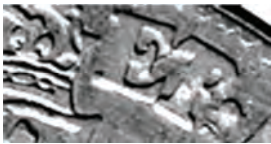
R over B



B over R



T over G



ET over FR



Only stop before date



A over G in FRA

CHARLES II, 1660-1685  
CROWNS



8 over 5



8 over 7



70 over 69



3 over 2



3 over 2



5 over 3



7 over 6



8 over 6



8 over 7



9 over 8



80 over 79



2 over 1

Type  
(Old ESC - A)

- A.** First bust, right, **with a rose** ☼ below<sup>1</sup>, stop above head, position of ties to wreath varies, bust divides legend after **CAROLVS**  
Pellet frosting on the cloak, no regnal date on edge  
**CAROLVS • II • DEI • GRA •**

*Leg.*

(Old ESC - B)

- B.** As before, but edge dated in Arabic numerals  
**DECVS • ET • TVTAMEN ★+★• 1662 • ★+★•**

*Edge*





- C.** As before, but striped frosting on the cloak; vertical at the front and diagonal on the shoulder

- D.** First bust variety; slightly larger, **rose below**, numeral **II** above King's head, upper tie from top curl, lower from between curls  
**CAROLVS • II • DEI • GRA •**  
**DECVS • ET • TVTAMEN ★** (No regnal date)

*Leg.*

*Edge*

CHARLES II, 1660-1685  
CROWNS

- Type E.** First bust variety as ‘D’, but no rose below and bust divides new legend; **CAROLVS • II • DEI • GRATIA** (no stop)  
(Old ESC - C) No regnal date on the edge, upper tie generally to **R**
- F.** As ‘E’, but frosted cloak and an extra curl on neck, initials **JR** (John Roettier) to the rear of lower curls, no regnal date
- G.** As ‘E’, but edge dated in Arabic numerals, with first reverse
- H.** As ‘E’ – no date on edge, but with second reverse
- (Old ESC - E) **I.** As ‘G’, but edge dated in Roman numerals, with second reverse
- J.** Similar to ‘I’, but no stop after **CAROLVS • II** cloak frosted, straighter ties, upper to **O** edge dated in Roman numerals
- (Old ESC - F) **K.** Second bust; smaller with larger drapery, the twin ties are twisted and the ends curve upwards, edge dated in Roman numerals
- L.** Second bust variety; similar to ‘J’, but different hair curls, the ties are only crooked and the ends curve outwards
- (Old ESC - G) **M.** Second bust variety with an Elephant below  
(Badge of the Africa Company, supplier of the bullion)
- (Old ESC - H) **N.** As ‘K’, but the regnal date in Roman words (not numerals)  
*Edge* **DECIMO NONO** etc
- (Old ESC - I) **O.** Third bust; much larger and broader than second (20 mm from tie to tip of nose), different hair curls, shorter ties curve outwards.
- (Old ESC - J) **P.** Fourth bust; older features, different hair style; three distinct long curls hang down over neck, twin crooked ties slant downwards
- (Old ESC - K) **Q.** Fourth bust with an Elephant and castle below
- Rev.* **1.** Crowned cruciform shields, top and bottom quartered (England and France), Star of the Garter in the centre and a pair of interlinked Cs in the angles (Charles son of Charles)
- Leg.* **16**  **62•MAG•**  **BR•FRA•**  **ET•HIB•**  **REX•**