

THE CAMBRIDGE COMPANION TO



**EUGENE
O'NEILL**

Edited by Michael Manheim

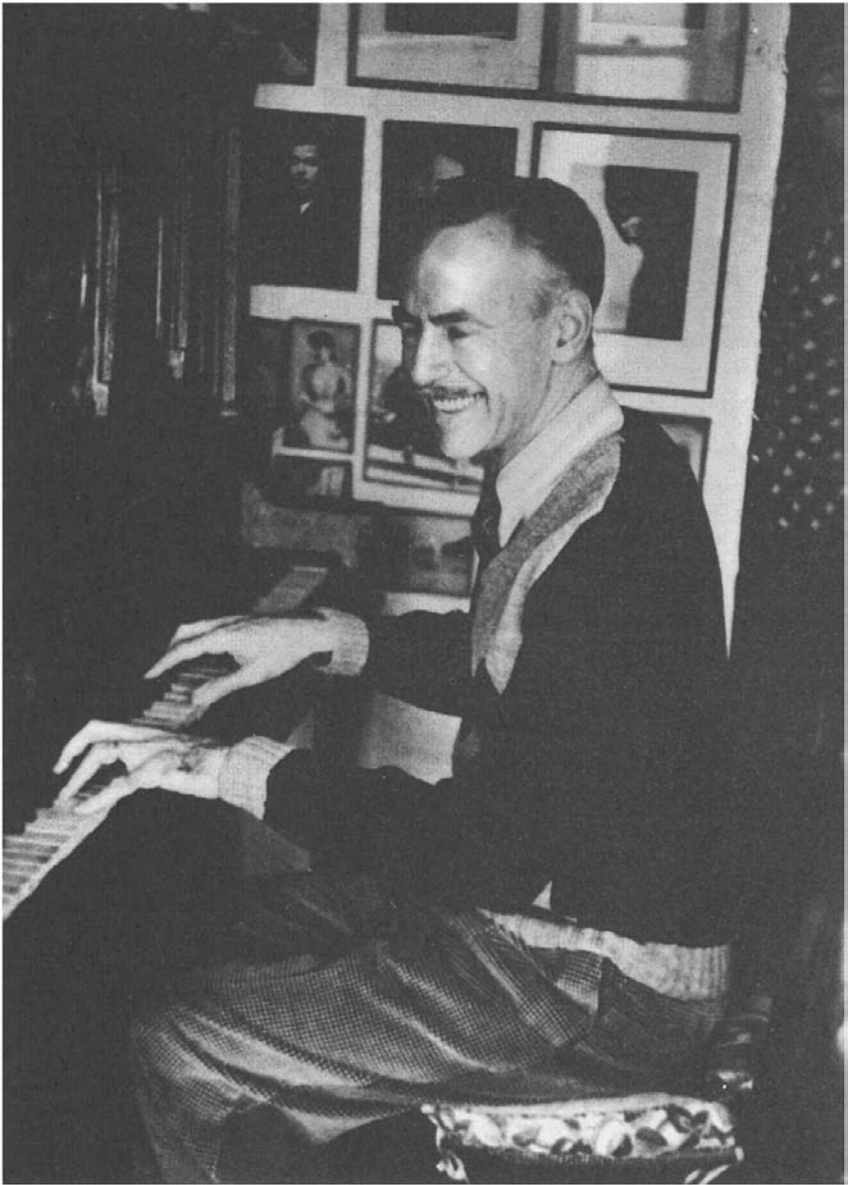
This page intentionally left blank

THE CAMBRIDGE
COMPANION TO
EUGENE O'NEILL

This is a volume of specially commissioned essays containing studies of Eugene O'Neill's life, his intellectual and creative forebears, and his relation to the theatrical world of his creative period, 1916–42. Also included are descriptions of the O'Neill canon and its production history on stage and screen, and a series of essays on “special topics” related to the playwright, such as his treatment of women in the plays, his portrayals of Irish and African-Americans, and his attempts to deal in dramatic terms with his parental family culminating in his greatest play, *Long Day's Journey Into Night*. One of the essays speaks for those who are critical of O'Neill's work, and the volume concludes with an essay on O'Neill criticism containing a select bibliography of full-length studies of the playwright's work.

CAMBRIDGE COMPANIONS TO LITERATURE

- The Cambridge Companion to Old English Literature*
edited by Malcolm Godden and Michael Lapidge
- The Cambridge Companion to Dante*
edited by Rachel Jacoff
- The Cambridge Chaucer Companion*
edited by Piero Boitani and Jill Mann
- The Cambridge Companion to Medieval English Theatre*
edited by Richard Beadle
- The Cambridge Companion to Shakespeare Studies*
edited by Stanley Wells
- The Cambridge Companion to English Renaissance Drama*
edited by A. R. Braunmuller and Michael Hattaway
- The Cambridge Companion to English Poetry, Donne to Marvell*
edited by Thomas N. Corns
- The Cambridge Companion to Milton*
edited by Dennis Danielson
- The Cambridge Companion to British Romanticism*
edited by Stuart Curran
- The Cambridge Companion to James Joyce*
edited by Derek Attridge
- The Cambridge Companion to Ibsen*
edited by James McFarlane
- The Cambridge Companion to Brecht*
edited by Peter Thomason and Glendyr Sacks
- The Cambridge Companion to Beckett*
edited by John Pilling
- The Cambridge Companion to T. S. Eliot*
edited by A. David Moody
- The Cambridge Companion to Renaissance Humanism*
edited by Jill Kraye
- The Cambridge Companion to Joseph Conrad*
edited by J. H. Stape
- The Cambridge Companion to Faulkner*
edited by Philip M. Weinstein
- The Cambridge Companion to Thoreau*
edited by Joel Myerson
- The Cambridge Companion to Edith Wharton*
edited by Millicent Bell
- The Cambridge Companion to Realism and Naturalism*
edited by Donald Pizer
- The Cambridge Companion to Twain*
edited by Forrest G. Robinson
- The Cambridge Companion to Whitman*
edited by Ezra Greenspan
- The Cambridge Companion to Hemingway*
edited by Scott Donaldson
- The Cambridge Companion to the Eighteenth-Century Novel*
edited by John Richetti
- The Cambridge Companion to Jane Austen*
edited by Edward Copeland and Juliet McMaster
- The Cambridge Companion to Samuel Johnson*
edited by Gregory Clingham
- The Cambridge Companion to Oscar Wilde*
edited by Peter Raby
- The Cambridge Companion to Tennessee Williams*
edited by Matthew C. Roudané
- The Cambridge Companion to Arthur Miller*
edited by Christopher Bigsby
- The Cambridge Companion to Virgil*
edited by Charles Martindale
- The Cambridge Companion to Greek Tragedy*
edited by P. E. Easterling
- The Cambridge Companion to the Modern French Novel*
edited by Timothy Unwin
- The Cambridge Companion to the Classic Russian Novel*
edited by Malcolm V. Jones and Robin Feuer Miller
- The Cambridge Companion to English Literature, 1650–1740*
edited by Steven N. Zwicker



Eugene O'Neill at his player piano "Rosie" in the early 1940s

THE CAMBRIDGE
COMPANION TO
EUGENE O'NEILL

EDITED BY
MICHAEL MANHEIM

*Professor Emeritus of English,
University of Toledo, Ohio*



CAMBRIDGE
UNIVERSITY PRESS

CAMBRIDGE UNIVERSITY PRESS

Cambridge, New York, Melbourne, Madrid, Cape Town, Singapore, São Paulo

Cambridge University Press

The Edinburgh Building, Cambridge CB2 2RU, UK

Published in the United States of America by Cambridge University Press, New York

www.cambridge.org

Information on this title: www.cambridge.org/9780521553896

© Cambridge University Press 1998

This publication is in copyright. Subject to statutory exception and to the provision of relevant collective licensing agreements, no reproduction of any part may take place without the written permission of Cambridge University Press.

First published in print format 1998

ISBN-13 978-0-511-22180-4 eBook (Adobe Reader)

ISBN-10 0-511-22180-0 eBook (Adobe Reader)

ISBN-13 978-0-521-55389-6 hardback

ISBN-10 0-521-55389-X hardback

ISBN-13 978-0-521-55645-3 paperback

ISBN-10 0-521-55645-7 paperback

Cambridge University Press has no responsibility for the persistence or accuracy of URLs for external or third-party internet websites referred to in this publication, and does not guarantee that any content on such websites is, or will remain, accurate or appropriate.

CONTENTS

<i>List of illustrations</i>	<i>page</i> ix
<i>Notes on contributors</i>	x
<i>Chronology</i>	xiii
<i>List of plays and poems</i>	xvii
Introduction	I
MICHAEL MANHEIM	
1 “Celebrant of loss”: Eugene O’Neill 1888–1953	4
STEPHEN A. BLACK	
2 O’Neill’s philosophical and literary paragons	18
EGIL TÖRNQVIST	
3 O’Neill and the theatre of his time	33
DANIEL J. WATERMEIER	
4 From trial to triumph: the early plays	51
MARGARET LOFTUS RANALD	
5 The middle plays	69
JAMES A. ROBINSON	
6 The late plays	82
NORMAND BERLIN	
7 Notable American stage productions	96
RONALD WAINSCOTT	
8 O’Neill on screen	116
KURT EISEN	

CONTENTS

9	O'Neill's America: the strange interlude between the wars BRENDA MURPHY	135
10	O'Neill's African and Irish-Americans: stereotypes or "faithful realism"? EDWARD L. SHAUGHNESSY	148
11	O'Neill's female characters JUDITH E. BARLOW	164
12	"A tale of possessors self-dispossessed" DONALD GALLUP	178
13	Trying to write the family play: autobiography and the dramatic imagination JEAN CHOTHIA	192
14	The stature of <i>Long Day's Journey Into Night</i> MICHAEL MANHEIM	206
15	O'Neill and the cult of sincerity MATTHEW H. WIKANDER	217
16	O'Neill criticism MICHAEL MANHEIM	236
	<i>Select bibliography of full-length works</i>	244
	<i>Index</i>	248

ILLUSTRATIONS

- | | | |
|---|---|---------------------|
| | Eugene O'Neill at his player piano "Rosie" in the early 1940s. (Reproduced by permission of the Beinecke Rare Book and Manuscript Library, Yale University Library) | <i>frontispiece</i> |
| 1 | Louise Bryant, George Cram Cook, and O'Neill in the 1916 Provincetown Players production of <i>Thirst</i> at the Wharf Theatre in Provincetown. (Reproduced by permission of the Beinecke Rare Book and Manuscript Library, Yale University Library) | 53 |
| 2 | Eugene O'Neill, <i>The Iceman Cometh</i> , Martin Beck Theatre, New York, 1946. Directed by Eddie Dowling, with James Barton as Hickey (Billy Rose Theatre Collection, The New York Public Library for the Performing Arts. Astor, Lenox and Tilden Foundations) | 111 |
| 3 | Josie (Colleen Dewhurst) and Tyrone (Jason Robards) in the José Quintero production of <i>A Moon for the Misbegotten</i> , New York, 1974. (Photo: Martha Swope. Reproduced by permission of Time/Life Pictures) | 112 |
| 4 | Greta Garbo brooding over her whiskey and ginger ale in the 1930 MGM film of <i>Anna Christie</i> . (Reproduced by permission of the New York Museum of Modern Art film collection) | 119 |
| 5 | Four haunted Tyrones: Jason Robards (Jamie), Dean Stockwell (Edmund), and Ralph Richardson (James) watching Katharine Hepburn (Mary) in the 1962 <i>Long Day's Journey Into Night</i> , Embassy Pictures. (Reproduced by permission of the New York Museum of Modern Art film collection) | 128 |
| 6 | Charles Gilpin as the Emperor Jones in uniform, smiling defiantly, from a 1920 production. (Reproduced by permission of the Beinecke Rare Book and Manuscript Library, Yale University Library) | 152 |

NOTES ON CONTRIBUTORS

JUDITH E. BARLOW is Professor of English and Women's Studies at the University at Albany, State University of New York. She is the author of *Final Acts: The Creation of Three Late O'Neill Plays* (1985), as well as articles on O'Neill, Lillian Hellman, Tina Howe, and the Provincetown Players. Professor Barlow is also the editor of *Plays By American Women, 1900-1930*, and *Plays By American Women, 1930-1960*.

NORMAND BERLIN is Professor Emeritus of English at the University of Massachusetts. He is the author of *O'Neill's Shakespeare* (1993), *Eugene O'Neill* (1982), *The Secret Cause: A Discussion of Tragedy* (1981), *Thomas Sackville* (1974), *The Base String: The Underworld in Elizabethan Drama* (1968), and numerous articles on subjects ranging from medieval poetry to modern drama and film.

STEPHEN A. BLACK, Professor of English at Simon Fraser University, is the author of books on Walt Whitman and James Thurber, and has published more than twenty articles on O'Neill. He studied psychoanalysis for nine years at the Seattle Psychoanalytic Institute.

JEAN CHOTHIA is a lecturer in the Faculty of English at Cambridge University and is a Fellow of Selwyn College. She is the author of *Forging a Language: A Study of the Plays of Eugene O'Neill* (1979), *André Antoine* [Cambridge Directors in Perspective Series] (1991), and *English Drama 1890-1940* (1996).

KURT EISEN is Associate Professor of English at Tennessee Technological University. He is the author of *The Inner Strength of Opposites: O'Neill's Novelistic Drama and the Melodramatic Imagination* (1995), as well as a variety of articles on modern drama.

DONALD GALLUP was curator of the Yale Collection of American Literature (including the principal O'Neill archive) for thirty-three years. He has edited O'Neill's *Inscriptions* (1960), *More Stately Mansions* (1964), *Poems* (1979), *Work Diary* (1981), and *The Calms of Capricorn* (1981), as well as works by Ezra Pound, Gertrude Stein, and Thornton Wilder. He is the author of

bibliographies of both T. S. Eliot and Ezra Pound, and a book of memoirs, *Pigeons in the Granite* (1988).

- MICHAEL MANHEIM, Professor Emeritus of English at the University of Toledo, is the author of *Eugene O'Neill's New Language of Kinship* (1982) and *The Weak King Dilemma in the Shakespearean History Play* (1973), as well as a good many related articles.
- BRENDA MURPHY is Professor of English at the University of Connecticut. She is the author of *Miller: Death of a Salesman* (1995), *Tennessee Williams and Elia Kazan: A Collaboration in the Theatre* (1992), *A Realist in the American Theatre: Selected Dramatic Criticism of William Dean Howells* (1992), *American Realism and American Drama, 1880-1940* (1987), and, with George Monteiro, *John Hay-Howells Letters* (1980).
- MARGARET LOFTUS RANALD is Professor Emerita of English, the City University of New York (Queens College). Her publications include *The Eugene O'Neill Companion* (1984), *Shakespeare and his Social Context: Studies in Osmotic Knowledge and Literary Interpretation* (1987), *John Webster* (1989). She is an Associate Editor of *The International Bibliography of Theatre* (1982-).
- JAMES A. ROBINSON, Professor of English at the University of Maryland, is the author of *Eugene O'Neill and Oriental Thought: A Divided Vision* (1982), as well as numerous articles on O'Neill, Miller, Shepard and others.
- EDWARD L. SHAUGHNESSY is Professor Emeritus of English at Butler University (Indianapolis). He is the author of *Eugene O'Neill in Ireland: The Critical Reception* (1988), *Down the Nights and Down the Days: Eugene O'Neill's Catholic Sensibility* (1996), and numerous essays on O'Neill's family and cultural background.
- EGIL TÖRNQVIST is Professor of Scandinavian Studies at the University of Amsterdam. His publications include *A Drama of Souls: Studies in O'Neill's Super-naturalistic Technique* (1968), *Strindbergian Drama: Themes and Structure* (1982), *Transposing Drama: Studies in Representation* (1991), *Ibsen: "A Doll's House"* (1995), and *Between Stage and Screen: Ingmar Bergman Directs* (1995).
- RONALD WAINSCOTT is Associate Professor of Theatre History, Dramatic Literature at Indiana University. He is the author of *The Emergence of Modern American Theater, 1914-1929* (1988), and *Staging O'Neill: The Experimental Years, 1920-1934* (1988), and has written numerous articles and entries in professional journals and books.
- DANIEL J. WATERMEIER is Professor of Theatre at the University of Toledo. He is author/co-author of *Between Actor and Critic: Letters of Edwin Booth and William Winter* (1971), *Shakespeare Around the Globe: A Guide to Notable Post-War Revivals* (1986), *Edwin Booth's Performances* (1990), *Shakespeare*

NOTES ON CONTRIBUTORS

Companies and Festivals: An International Guide (1995), and numerous articles on American theatre and drama, as well as on contemporary Shakespearean production.

MATTHEW H. WIKANDER is Professor of English at the University of Toledo. He is author of *Princes to Act: Royal Audience and Royal Performance, 1578-1792* (1993), and *The Play of Truth and State: Historical Drama from Shakespeare to Brecht* (1986), as well as numerous articles on drama and theatre from the Elizabethans to the present.

CHRONOLOGY

- 1877 James, Sr. (father) marries Ella Quinlan O'Neill (mother).
- 1878 James, Jr. (brother) born.
- 1883 Edmund (brother) born.
- 1885 Edmund dies.
- 1888 Eugene Gladstone O'Neill born on 16 October in New York City.
- 1895 To Mount Saint Vincent Academy boarding school (NYC).
- 1900 To Betts Academy (Stamford, Connecticut).
- 1906 To Princeton University (leaves 1907).
- 1909 Marries Kathleen Jenkins, followed by gold prospecting trip to Honduras.
- 1910 Eugene Gladstone O'Neill, Jr. (son) born. O'Neill sails to Buenos Aires as member of ship's crew.
- 1911 Returns to United States. Takes up residence at Jimmy-the-Priest's (tavern and room house in lower Manhattan, where he attempts suicide in 1912).
- 1912 Divorced from Kathleen Jenkins, returns to parental home (Monte Cristo Cottage in New London, Connecticut). Reporter for the New London *Telegraph*. Enters Gaylord Farm Sanatorium

CHRONOLOGY

for tuberculosis on 24 December (where he stays for six months and writes his first one-act plays).

- 1914 To George Pierce Baker's class in playwriting at Harvard. Publishes *Thirst, and Other One-Act Plays*.
- 1916 To Provincetown, Massachusetts, where *Bound East for Cardiff* and *Thirst* are produced. *Bound East* also produced in New York later this year. *Before Breakfast* produced.
- 1917 *Fog, The Sniper, In the Zone, The Long Voyage Home, and Ile* produced.
- 1918 Marries Agnes Boulton. *The Rope, Where the Cross is Made, and The Moon of the Caribbees* produced.
- 1919 Son, Shane O'Neill, born. *The Dreamy Kid* produced.
- 1920 *Beyond the Horizon* produced (wins Pulitzer Prize). Father, James O'Neill, Sr., dies. *The Emperor Jones* and *Diff'rent* produced.
- 1921 *Anna Christie* produced (wins second Pulitzer Prize). *Gold* and *The Straw* produced.
- 1922 Mother, Ella Quinlan O'Neill, dies. *The Hairy Ape* and *The First Man* produced.
- 1923 Brother, James O'Neill, Jr., dies.
- 1924 *All God's Chillun Got Wings, Welded, and Desire Under the Elms* produced.
- 1925 *The Fountain* produced.
- 1926 Daughter, Oona O'Neill, born. *The Great God Brown* produced.
- 1928 *Lazarus Laughed* produced (in Pasadena, California). *Marco Millions* and *Strange Interlude* produced. (*Strange Interlude* wins third Pulitzer Prize.)

CHRONOLOGY

- 1929 *Dynamo* produced. Divorces Agnes Boulton, marries Carlotta Monterey (in France).
- 1931 *Mourning Becomes Electra* produced.
- 1933 *Ah, Wilderness!* produced.
- 1934 *Days Without End* produced.
- 1936 Awarded Nobel Prize. (During the late 1930s and into the 1940s, O'Neill is at work on his eleven-play Cycle, "A Tale of Possessors Self-Dispossessed," which includes the later-to-be-produced *A Touch of the Poet* and *More Stately Mansions*. See the essay by Donald Gallup in this collection.)
- 1937 Builds "Tao House" in Danville, California (where he writes his last plays).
- 1939 Writes *The Iceman Cometh*.
- 1940 Writes *Long Day's Journey Into Night*.
- 1943 Completes *A Moon for the Misbegotten*.
- 1946 *The Iceman Cometh* produced.
- 1947 *A Moon for the Misbegotten* produced (in Columbus, Ohio).
- 1950 Son, Eugene O'Neill, Jr., dies.
- 1953 O'Neill dies (27 November, in Boston).
- 1955 *The Iceman Cometh* revived by José Quintero in New York (starring Jason Robards, Jr.).
- 1956 *Long Day's Journey Into Night* produced in Stockholm, then New York. (Wins fourth Pulitzer Prize.)
- 1957 *A Touch of the Poet* produced.
- 1958 *Hughie* produced (in Stockholm).

CHRONOLOGY

- 1959 *Hughie* produced in New York.
- 1962 A version of *More Stately Mansions* produced (in Stockholm).
- 1962 Another version of *More Stately Mansions* produced in New York.
- 1972 *Long Day's Journey Into Night* revived in London (starring Laurence Olivier).
- 1973 *A Moon for the Misbegotten* revived by José Quintero in New York (starring Jason Robards, Jr. and Colleen Dewhurst).

From the 1960s on, there have been numerous successful revivals of O'Neill plays on stage and screen. See the essays by Ronald Wainscott and Kurt Eisen in this collection.

PLAYS AND POEMS
(listed by year of publication)

- Thirst, and Other One-Act Plays* (*Thirst, Fog, Warnings, The Web, Recklessness*). Privately Printed, 1914.
- The Moon of the Caribbees, and Six Other Plays of the Sea* (*Bound East for Cardiff, In the Zone, The Long Voyage Home, Ile, Where the Cross is Made, The Rope*). NY: Boni and Liveright, 1919.
- Beyond the Horizon*. NY: Boni and Liveright, 1920.
- Gold*. NY: Boni and Liveright, 1921.
- The Emperor Jones, Diff'rent, The Straw*. NY: Boni and Liveright, 1921.
- The Hairy Ape, Anna Christie, The First Man*. NY: Boni and Liveright, 1922.
- All God's Chillun Got Wings, and Welded*. NY: Boni and Liveright, 1924.
- The Complete Works of Eugene O'Neill* (including *The Dreamy Kid*). 2 vols. NY: Boni and Liveright, 1924.
- Desire Under the Elms*. NY: Boni and Liveright, 1925.
- Plays*. 4 vols. NY: Boni and Liveright, 1925.
- The Great God Brown, The Fountain, The Moon of the Caribbees, and Other Plays* (the "other plays" being those included among the (Other) *Six Plays of the Sea*). NY: Boni and Liveright, 1926.
- Lazarus Laughed*. NY: Boni and Liveright, 1927.
- Marco Millions*. NY: Boni and Liveright, 1928.
- Strange Interlude*. NY: Liveright, 1928.
- Dynamo*. NY: Liveright, 1929.
- Mourning Becomes Electra*. NY: Liveright, 1931.
- Nine Plays*. NY: Liveright, 1932.
- Ah, Wilderness!*. NY: Random House, 1933.
- Days Without End*. NY: Random House, 1934.
- The Plays of Eugene O'Neill*. 12 vols. NY: Random House, 1934-5.
- The Iceman Cometh*. NY: Random House, 1946.
- Lost Plays of Eugene O'Neill* (*Abortion, The Movie Man, The Sniper, Servitude, and A Wife for A Life*). NY: The Citadel Press, 1950.

- The Plays of Eugene O'Neill*. 3 vols. NY: Random House, 1951.
- A Moon for the Misbegotten*. NY: Random House, 1952.
- Long Day's Journey Into Night*. New Haven: Yale University Press, 1956.
- A Touch of the Poet*. New Haven: Yale University Press, 1957.
- Hughie*. New Haven: Yale University Press, 1959.
- More Stately Mansions*. Edited by Donald Gallup. New Haven: Yale University Press, 1964.
- Ten "Lost" Plays* (including the plays from *The Lost Plays of Eugene O'Neill* plus *Thirst*, *The Web*, and *Warnings*). NY: Random House, 1964.
- Poems: 1912-1914*. Edited by Donald Gallup. New Haven and NY: Ticknor and Fields, 1980.
- Chris Christofersen*. NY: Random House, 1982.
- O'Neill: Complete Plays*. 3 vols. NY: The Library of America, 1988.
(Includes the following previously unpublished plays: *Bread and Butter*, *Now I Ask You*, *The Personal Equation*, *The Reckoning*.)

MICHAEL MANHEIM

Introduction

Not many today question the pre-eminence of Eugene O'Neill as America's leading playwright. The playwrights who followed him – Williams, Miller, and Albee, and, more recently, dramatists like Sam Shepard, David Mamet, and Tony Kushner – all have acknowledged their profound debt to him, as have younger playwrights in countries as remote from one another as Sweden and China. He is internationally recognized as the quintessential American dramatist of the twentieth-century world stage. Some are uncomfortable with what occasionally seems the melodramatic excess of even his most successful plays. There have been and continue to be vociferous nay-sayers about the playwright's work. But they are a relatively small minority, and many of those who express reservations about the excesses of earlier plays acknowledge that he “forged” those excesses (to use Jean Chothia's word) into a uniquely powerful medium that culminated in America's greatest tragedy, *Long Day's Journey Into Night*.

O'Neill has long been a fixture of the American educational curriculum. Before the Second World War, plays such as *Beyond the Horizon*, *The Emperor Jones*, *The Hairy Ape*, *Desire Under the Elms*, *Mourning Becomes Electra*, and *Ah, Wilderness!* were regularly assigned in high school and college literature courses; and if the emphasis on such plays faded in the post-war era, O'Neill's reputation was explosively revived with *The Iceman Cometh*, *Long Day's Journey*, and *A Moon for the Misbegotten* – in the context of which many of those earlier plays are now studied. Not insignificant in that revival have been productions of those late plays by director José Quintero working with actors Jason Robards and Colleen Dewhurst, and on-screen treatments by Sidney Lumet and Laurence Olivier.

What the future holds for that reputation no one can tell, but it may be significant that, as reported in the *New York Times* for 10 February 1997 (Section C, p. 11), “a series on performances of the entire O'Neill canon, 50 plays in all,” is currently being contemplated at New York University,

Yale University, the Provincetown Playhouse, and Monte Cristo Cottage (O'Neill's boyhood home in New London, Connecticut and the setting of *Long Day's Journey*).

The Cambridge Companion to Eugene O'Neill, like the others in the Companion series, attempts to be comprehensive without ignoring more specialized approaches to the playwright. Three background discussions constitute the opening section. Stephen A. Black deals first with the subject which has probably been the most important in O'Neill study over the past thirty years, O'Neill's biography as it relates to his childhood home life – the subject first brought into prominence, of course, with the appearance of *Long Day's Journey*. This is followed by Egil Törnqvist's discussion of the several European philosophers and playwrights – notably Nietzsche, Ibsen, and Strindberg – who had the greatest influence on O'Neill's intellectual and artistic development. And third in this group is Daniel J. Watermeier's discussion of the theatrical world in which O'Neill and his father before him were such important figures.

The second section deals with the canon itself. The early and early-middle periods plays – plays such as the *S.S. Glencairn* series, *The Emperor Jones*, *The Hairy Ape*, and *Desire Under the Elms* that brought him his initial fame – are looked at in some detail by Margaret Loftus Ranald (who organizes her essay more around themes than strict chronology). Her essay is followed by James A. Robinson's probing discussion of the plays of O'Neill's middle period – plays such as *The Great God Brown*, *Strange Interlude*, and *Mourning Becomes Electra* – that solidified the playwright's reputation. The last-named won him the Nobel Prize for Literature in 1936. Finally, Normand Berlin discusses O'Neill's all-important late plays, including the two extant plays of his unfinished "Cycle" (which is discussed at length by Donald Gallup later in the volume). Berlin, one of the best-known assessors of O'Neill's later career, focuses chiefly, of course, on *The Iceman Cometh*, *Long Day's Journey*, *Moon for the Misbegotten*, and the one-act *Hughie*.

The third section of this Companion will be for some its most interesting in that it focuses on O'Neill's plays in performance. While space limitations prohibit a detailed history of the great number of productions of O'Neill's plays world-wide, Ronald Wainscott focuses on the best-known professional productions in America. Wainscott's discussion is particularly useful in juxtaposing discussions of initial productions of individual plays with important revivals of those plays. And Kurt Eisen follows up with an insightful look at the rapidly expanding production history of O'Neill plays in cinema and television – suggesting, among other things, which plays have worked best in which medium.

The last section is the longest and most varied – encompassing subjects as far-ranging as O’Neill’s fascination with America’s racial and religious minorities in his plays to a forthright questioning of the playwright’s claim to greatness. Brenda Murphy leads off with a discussion of how the cultural mores of the period between the two world wars worked to shape O’Neill’s plays of that period – notably *Strange Interlude*. She is followed by Edward L. Shaughnessy’s look at O’Neill’s treatment of African–Americans and Irish–Americans, the two most frequently included minority groups in his plays. And following this is Judith E. Barlow’s feminist consideration of O’Neill’s women characters.

Donald Gallup’s essay on O’Neill’s vast unfinished Cycle “A Tale of Possessors Self-Dispossessed,” which comes next, is unique to this collection in its consideration of material from O’Neill’s unpublished *Work Diary* at the Beinecke Library at Yale University. Gallup here summarizes plots and scenarios of unfinished and, in some cases, unwritten plays to give us a sense of the overall dimensions of the projected work.

The next two essays look from different perspectives at O’Neill’s brilliance as a dramatist. Jean Chothia looks first at how O’Neill forged theatrical techniques suited to the writing of autobiographical drama throughout the latter part of the twentieth century. Following this, the editor of this collection examines aspects of *Long Day’s Journey Into Night* which further certify its greatness.

The essay on *Long Day’s Journey* just referred to is intentionally juxtaposed with the final essay in this section. My comments on that play seek unequivocally to place O’Neill in the pantheon of great world dramatists, while Matthew Wikander seeks equally unequivocally to undermine the playwright’s pre-eminence. Wikander’s essay will infuriate some O’Neill enthusiasts, but he effectively articulates attitudes of a vocal minority that need to be patiently considered in any final assessment of O’Neill’s work.

The Companion concludes with a discussion and selected bibliography of O’Neill criticism.

I

STEPHEN A. BLACK

“Celebrant of loss” Eugene O’Neill 1888–1953

On 2 February 1920 Eugene O’Neill saw his first major play, *Beyond the Horizon*, open at the Morosco. It was his first opening and first performance in a mainstream theatre. *Beyond* was about the thirtieth play he had finished since he began writing plays in 1913; he wrote it early in 1918 when he was twenty-nine. When it opened two years later, New York was in the throes of a lethal influenza epidemic, and the opening was an unpublicized “special matinee.” Late in rehearsals, O’Neill took over direction from the lead actor, but despite all efforts, despaired of the production. Nevertheless, an audience came and accepted the play as a serious and absorbing work, and reviewers admired it. Though it is no great compliment, *Beyond* was clearly the best play yet written by an American and would win O’Neill the first of four Pulitzer Prizes. The production ran 144 performances and brought O’Neill over \$6,000 which made him, at thirty-one, finally independent of his father’s purse-strings. James O’Neill, the author’s father, a celebrated heroic actor whose career went back more than fifty years, attended the performance and was seen to leave the theatre wiping tears of pride from his cheeks.

As with several events in the author’s life, there was heavy irony in the occasion. Within a month, James O’Neill suffered a stroke and while he was recovering, intestinal cancer was diagnosed. Until adolescence, Eugene had worshipped his father as a hero – such are his words in a private autobiographical document. Then for many years Eugene seemed nearly as often to hate his father as to love him, although his father supported him in and out of trouble, and tolerated the youth’s contempt. In 1912 a detente developed and in the last years of the aging actor’s life, father and son became close in an increasingly collegial way. From March to August 1920 Eugene grieved deeply while watching his father die slowly and painfully, spending many hours and days at his father’s bedside when James was unconscious or barely lucid.

As with many artists, bereavement set off in Eugene a spate of creative

effort. For two years he had struggled with a promising, unwieldy play he called "Chris Christophersen." Almost immediately after James O'Neill's death on 10 August, Eugene began sweeping revisions, conceiving new characters for Chris's daughter and her lover, and a new setting and plot for Acts 2 and 3. He finished "*Anna Christie*" in less than six weeks. A day or so later he began another new play, *The Emperor Jones*, which he finished in about two weeks. When he was done, almost without pausing, he began and finished still another play, the undervalued *Diff'rent*.

In ordinary circumstances, O'Neill's mourning for his father would surely have been intense, but it would have run a normal course, such as is described by the psychoanalyst John Bowlby and others, and would have resolved itself in three or four years. (See, e.g. Bowlby, *Attachment and Loss* [New York: Basic Books, 1969].) But O'Neill's life had never been ordinary, and his grief was to be greatly compounded. A year and a half after James died, Ella O'Neill, thirteen years younger than her husband and seemingly in good health, died suddenly from a brain tumor. Twenty months later, her first son, James Jr., ten years older than Eugene and idolized by him since childhood, succeeded in an oft-declared intent to drink himself to death. Within thirty-nine months, O'Neill lost all the members of his parental family.

The cluster of losses overwhelmed the playwright and put him in a state of mourning that lasted two decades and determined the qualities, themes and characters of everything he wrote from then on. After 1920, nearly every O'Neill play is either directly or indirectly about death, loss and mourning, and most have bereaved characters (such as Eben Cabot in *Desire Under the Elms* or Nina Leeds in *Strange Interlude*) who struggle unsuccessfully to let their dead be dead and to live their own lives without feeling haunted. Over the next two decades writing was the vehicle for O'Neill's mourning.

Finally he reached the point where, in privately dedicating the manuscript of the late autobiographical masterpiece, *Long Day's Journey Into Night* (1941), he could tell himself and his wife that he had faced his dead "at last" and written of them "with deep pity and understanding and forgiveness." O'Neill felt that he had finally come to terms with his dead by understanding the spirits that haunted them, and how they haunted him. How he reached that point of insight is as remarkable a story as how he came to be so haunted in the first place.

The most important event in O'Neill's early life, a youth marked by large events, was the discovery when he was not quite fourteen that his mother had become a morphine addict at his birth, he himself being the unwitting

cause of her addiction. It was a discovery not unlike the discovery by one Oedipus that is celebrated in two plays by Sophocles; in one play Sophocles imagined the process of discovery, and in the other, the consequences of the discovery.

The young Eugene did not discover that he had killed his father and wed and begot children with his mother, but he learned that the birth of his eleven-pound natal self had caused his mother prolonged pain and depression for which morphine was prescribed. Ella O'Neill rapidly became addicted. The addiction plagued her and her family for the next quarter-century. Eugene grew up sharing the family assumption that they would all have been better off had he not been born. Guilt and responsibility preceding the possibility of deliberate choice, an old-fashioned idea even in Periclean Athens, became a topic of reflection and self-scrutiny for the future playwright. Given his birth into a theatrical family and his remarkable creative drive, Eugene had little more choice in the matter of becoming a tragic playwright than he had in causing his mother's affliction.

Before the discovery, life had been less difficult, though far from ordinary. Eugene was born on 17 October 1888 in a Manhattan hotel. He was nursed in the wings of theatres as his father travelled North America in an adaptation of *The Count of Monte Cristo*, a play he performed thousands of times during thirty years of almost constant touring. James O'Neill (1844–1920) and his wife Ella (Mary Ellen Quinlan 1857–1922) were deeply dependent on one another and although she hated the uncomfortable travelling, she almost always accompanied him. The first son, Jamie (1878–1923), travelled with his parents until he was seven when he was sent to school in South Bend, Indiana, where his mother had also been educated. A second son, Edmund Burke O'Neill, born in 1884, died a year and a half later of measles, caught from Jamie. Jamie was blamed for deliberately infecting his brother and carried the guilt all his life.

Despite a first-rate education and top marks at prep school and at St. John's College (later, Fordham University), Jamie could never settle into a career, and in fact, got himself expelled from St. John's for a prank a few months before he would have graduated. A sport and an athlete, a bon vivant, a heavy drinker from adolescence, Jamie seldom worked and was dependent on his father throughout his life. He acted sometimes in his father's company, but never fulfilled the talent his father thought he had. Eugene grew up idolizing his brother; later, when he rebelled against his father Eugene took his father's exasperation with Jamie as evidence of his brother's perfection. Eugene's idealization of his brother continued almost unchanged until shortly before Jamie died.

Like Jamie, Eugene travelled with his parents until he was seven; but

unlike Jamie he was cared for by a nanny, hired to help his mother who was not recovering from her addiction to morphine. Insatiably curious herself, the nanny took young Eugene to see the sights wherever they travelled. At seven he had a wider acquaintance with the natural wonders and oddities of America than most Americans ever acquire. All the while Eugene absorbed the grammar of theatrical artifice, a native language.

At seven everything changed. He was sent to a Catholic boarding school which he loathed in suburban New York. There, and at a Catholic prep school in Manhattan, he drew into himself and counted the weeks and days until he would rejoin his parents and brother for summers in New London, Connecticut, where the family had a seaside cottage. He earned good marks, but virtually ignored school life; he read voraciously, and wrote a stream of letters and poems. Until sent to school, he had known almost no children; he had been the only child, the boss's son, in a world of actors. Throughout his life he remembered hating school for immersing him in the dogma of Sin, pervasive and original – this before he knew of his own primal crime. Although his father was deeply devout, family Catholicism was relaxed. At school, nuns and priests ruled their boys with severe hands. Eugene, an obedient, cooperative child, had probably never been punished before going to school, and he never forgot or forgave injuries and injustices. He remained in Catholic schools until he was thirteen.

In late summer, 1902, Ella O'Neill ran out of morphine and tried to drown herself. James and Jamie decided Eugene had to be told about her addiction, and they could not conceal that they held his birth to be its cause. The shameful secret and blame gave Eugene leverage in an old argument with his father, to let him escape Catholic school. Eugene transferred to the secular Betts Academy in Stamford, Connecticut. At Betts he made a good academic record and acquired a solid education, which he amplified by constant wide reading, by writing poems, by writing daily letters to parents, brother, nanny, and others. He had learned as early as primary school that through letter writing he could escape the immediate and create a world more pleasant than the world of nuns surrounding him. Fellow students remembered him at Betts, as at his previous schools, a loner, even tempered, very determined, somewhat more decadent in rebellion than was typical for the time.

The discovery of his mother's addiction caused his adolescence to abort and set off a decade-long binge of self-destructive behavior. He started drinking heavily and was probably a full-blown alcoholic before he was fifteen. His father's fame made it easy for Eugene, guided by Jamie, to wander casually through New York theatre dressing rooms. Tall and lean, exceptionally handsome, the son of a prominent father, Eugene fell easily

into carousing with show girls, prostitutes, married women, women of affairs. He enrolled at Princeton in the fall of 1906 to take a science program, but attended so few classes that he was dropped for excessive cuts before the end of the spring term.

For the next two years Eugene drank and carried on with his brother and other wild friends, having numerous casual affairs. In 1909 he became involved with Kathleen Jenkins, daughter of a prominent, troubled family, who soon became pregnant. Fearing he would be sued by Kathleen's family, James arranged for Eugene to leave the country on a gold-prospecting expedition to Honduras. Before he left, however, Eugene secretly married Kathleen, apparently out of a sense of guilt or honor, a sense which did not extend to attempting to be husband or father. He saw Kathleen and his son only once more before the boy was eleven. The trip to Honduras gave Eugene a taste for adventure and over the next two years he made at least three more voyages as a sailor, attaining on his last the rating "able-bodied." His "A-B" certificate, which he cherished all his life, was the first sign that he might ever become self-supporting.

Although Eugene never lived with Kathleen, the marriage had an important consequence beside the birth of Eugene Jr. Late in 1911 Kathleen filed for divorce asking for neither support nor alimony. The petition seemed to bring home to Eugene the reality of the marriage and touched the enormous guilt he carried for his mother's addiction. His guilt led him to procure from several druggists enough of the opiate veronal to kill himself. In a Fulton Street flophouse where he was staying, he went to his room, hooked the door and ingested the lot. By chance a friend found him several hours later and, unable to rouse him, got help. The proprietor, afraid of having a death on the premises, called for a cab. Eugene was taken to Bellevue Hospital where his stomach was pumped and he was held several days for observation.

The psychoanalyst Erik Erikson once wrote that certain wayward young people need to "touch rock-bottom" before they can begin to find themselves. The nearly successful suicide attempt had such an effect on Eugene. He made a partial detente with his father (who had thanklessly supported Eugene since he left Princeton), and got a job writing features and occasional reportage for a New London newspaper. (His father secretly underwrote his salary.) He also fell romantically in love with a local girl whom he tried to educate by foisting on her his favorite authors: Nietzsche, Schopenhauer, Wilde, Whitman, Swinburne, Baudelaire, Fitzgerald's Omar Khayyam, Dowson and the like. His adolescence having in effect aborted in 1902, he now returned to it for another try. He would have other such