

*Solutions Manual for*  
***The Elements  
of Polymer Science  
and Engineering***

**Alfred Rudin**

*Departments of Chemistry  
and Chemical Engineering  
University of Waterloo  
Waterloo, Ontario, Canada*



ACADEMIC PRESS, INC.  
Harcourt Brace Jovanovich, Publishers  
San Diego New York Berkeley Boston  
London Sydney Tokyo Toronto

**COPYRIGHT © 1982, BY ALFRED RUDIN LTD.  
ALL RIGHTS RESERVED.  
NO PART OF THIS PUBLICATION MAY BE REPRODUCED OR  
TRANSMITTED IN ANY FORM OR BY ANY MEANS, ELECTRONIC  
OR MECHANICAL, INCLUDING PHOTOCOPY, RECORDING, OR ANY  
INFORMATION STORAGE AND RETRIEVAL SYSTEM, WITHOUT  
PERMISSION IN WRITING FROM THE PUBLISHER.**

ACADEMIC PRESS, INC.  
1250 Sixth Avenue, San Diego, California 92101

*United Kingdom Edition published by*  
**ACADEMIC PRESS, INC. (LONDON) LTD.**  
24/28 Oval Road, London NW1 7DX

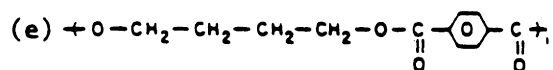
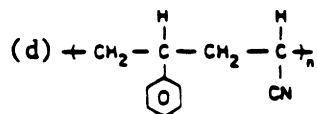
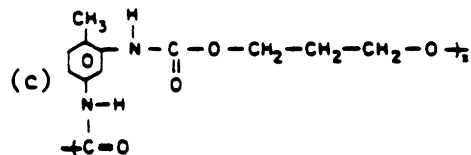
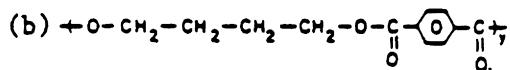
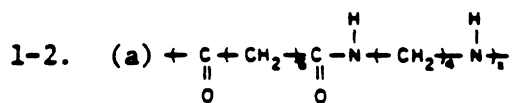
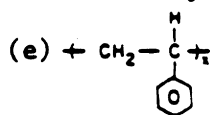
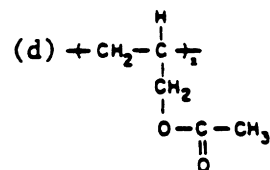
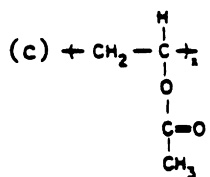
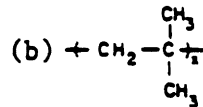
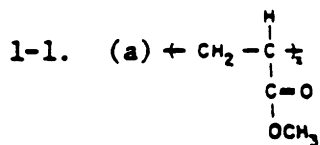
**ISBN 0-12-601682-8**

PRINTED IN THE UNITED STATES OF AMERICA

88 89 90 91

10 9 8 7 6 5

Chapter 1



1-3. (a)  $\frac{100,000}{113} = 885$

(b)  $\frac{100,000}{192} = 521$

(c)  $\frac{100,000}{97} = 1031$

(d)  $\frac{100,000}{162} = 617$

1-4. (a) (i) 2      (ii) 2      (iii) 0      (iv) 4

(b) same as in (a)

